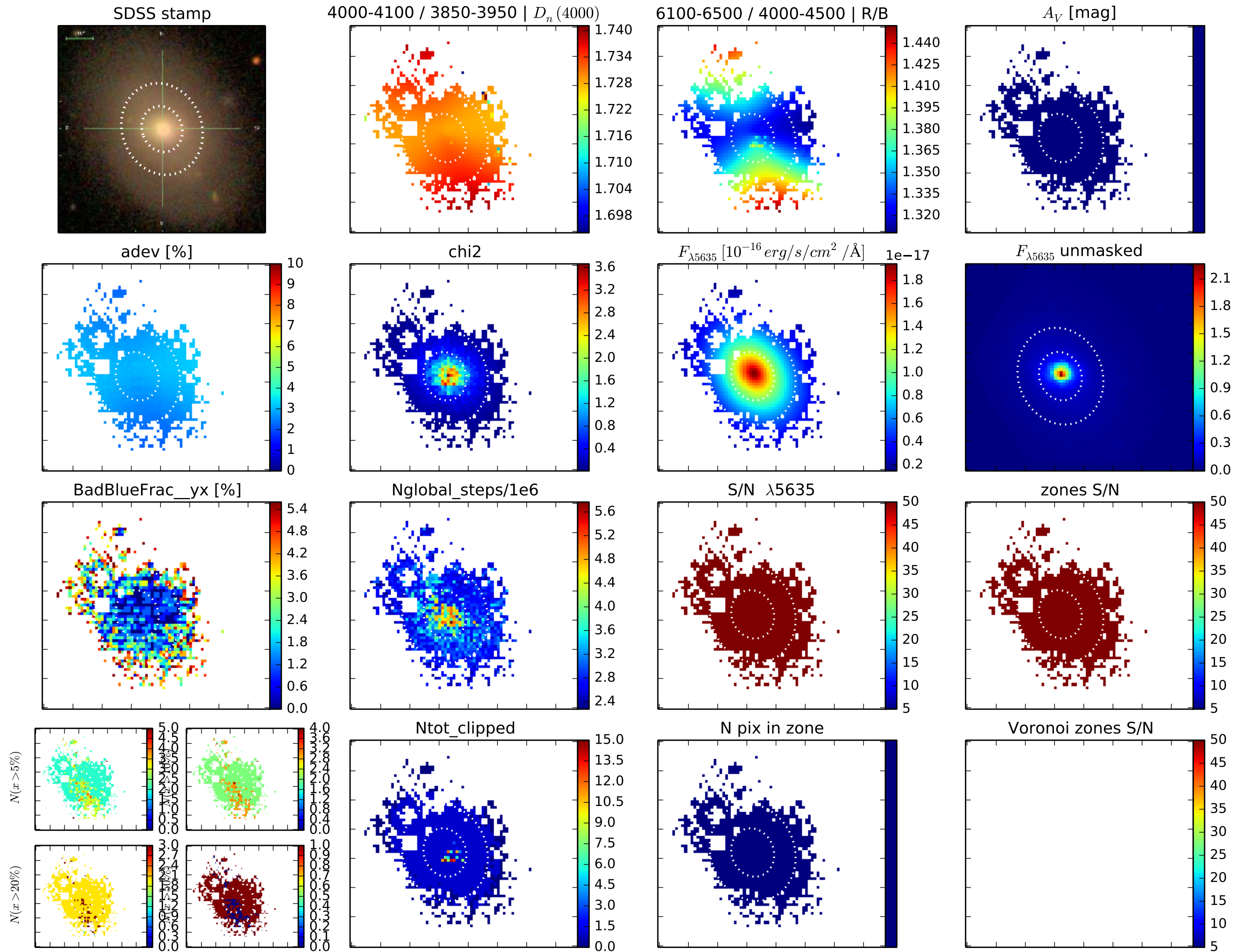
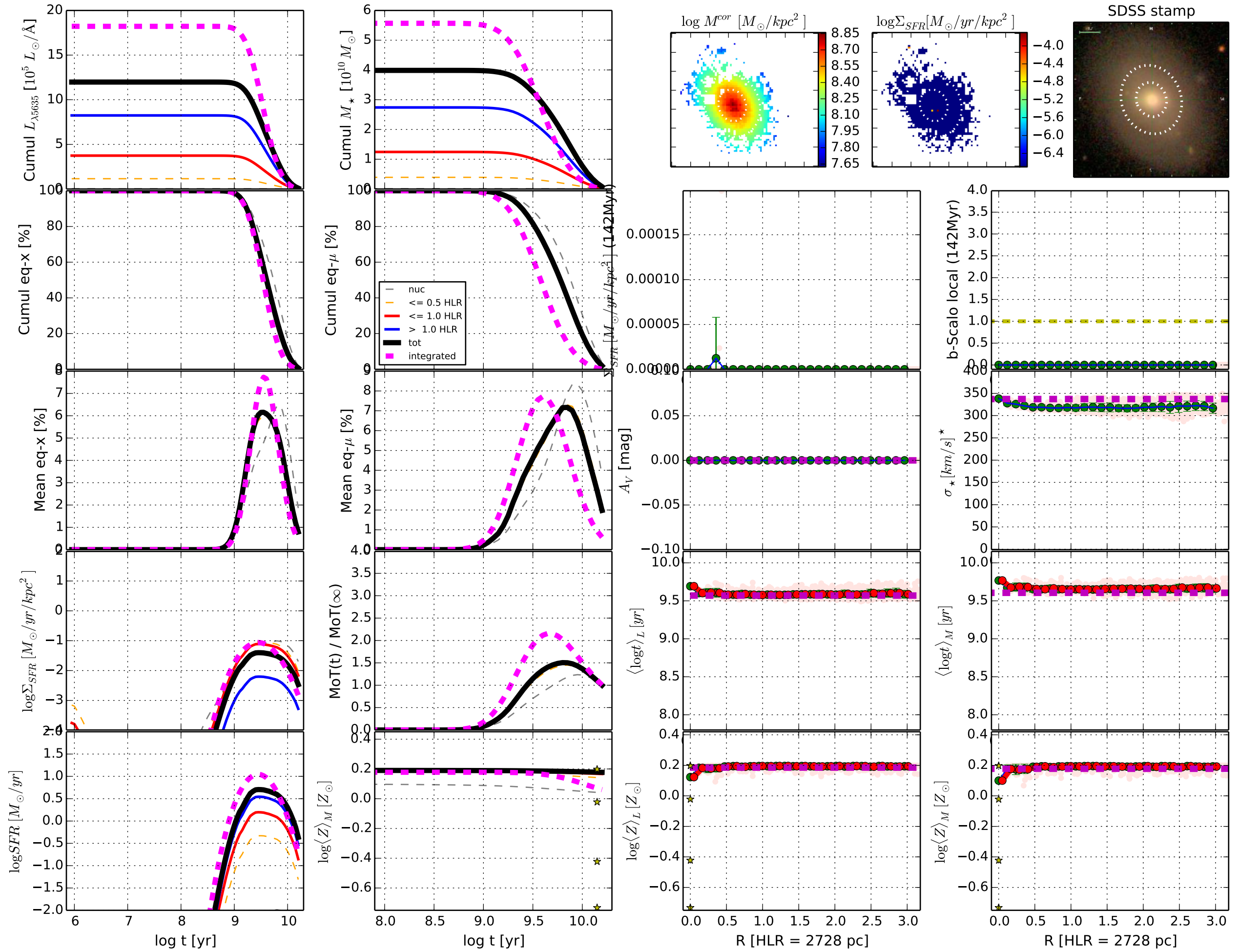


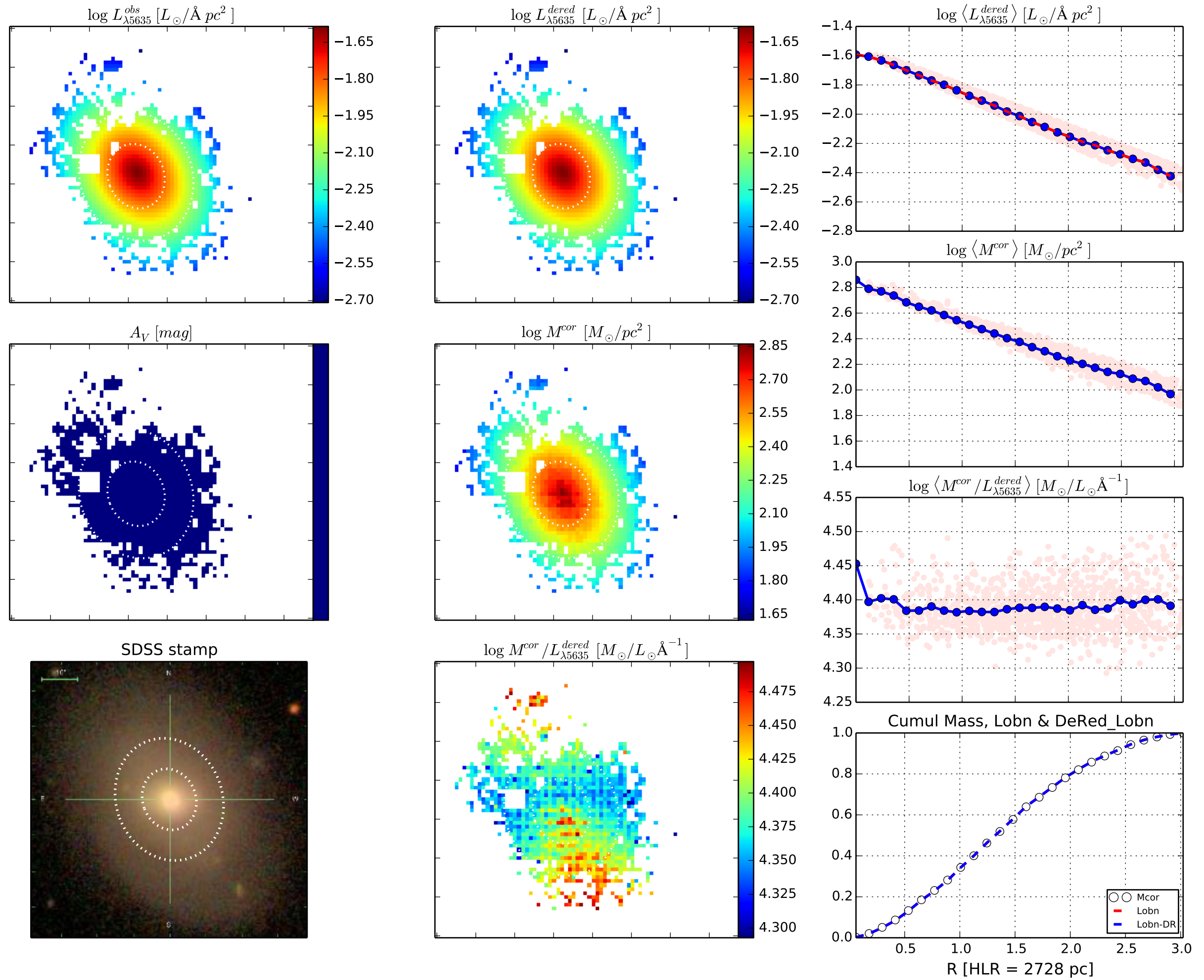
[Fig00] Data-&Fit Quality || K0035 0.4.3 d14a512 w/base Bgsd6e || FWHM= 0.500000 dex ; $\Delta R=1.000000$ pix || NGC0364 || Disk

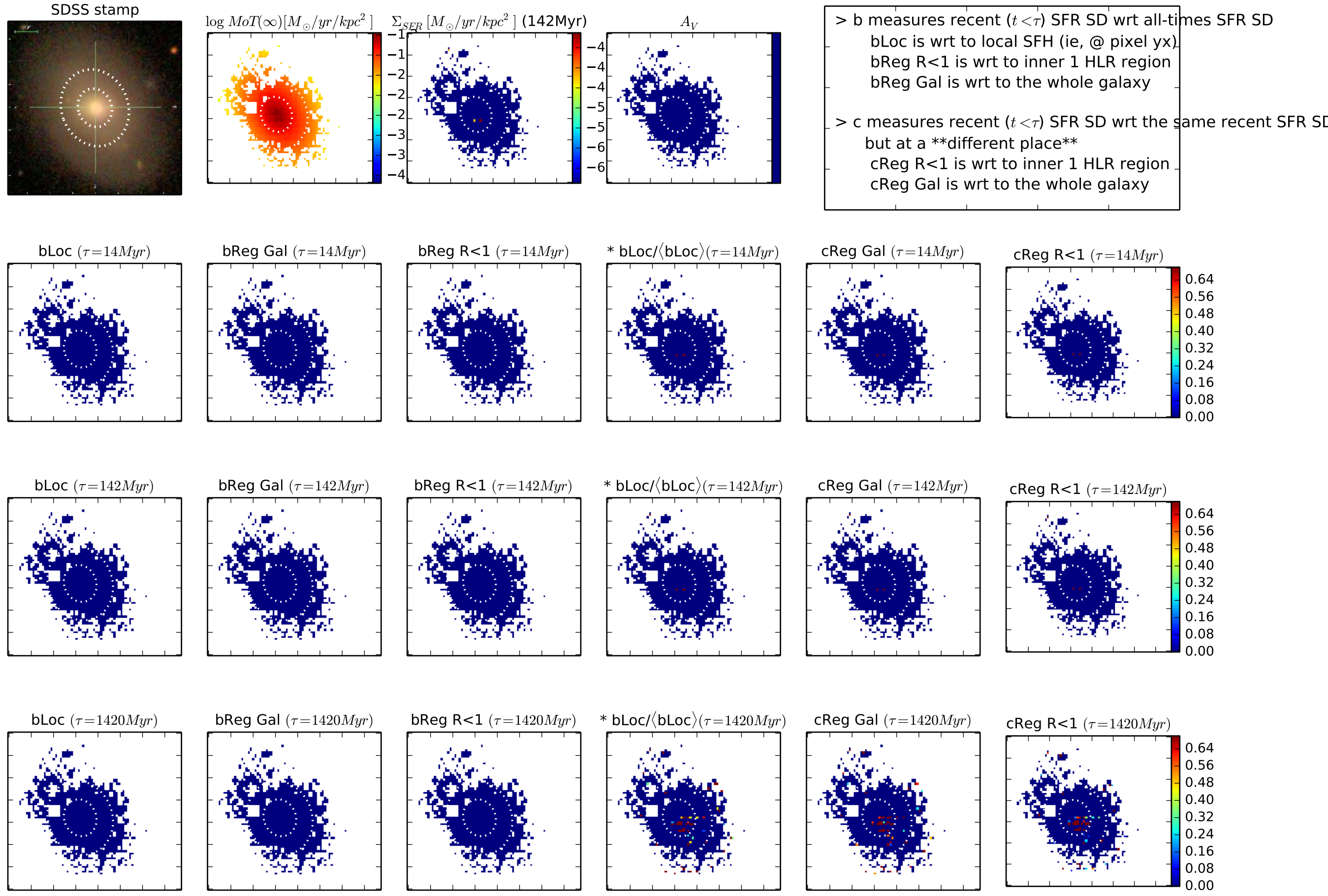


[Fig01] t & R profiles || K0035 0.4.3 d14a512 w/base Bgsd6e || FWHM= 0.500000 dex ; $\Delta R=1.000000$ pix || NGC0364 || Disk

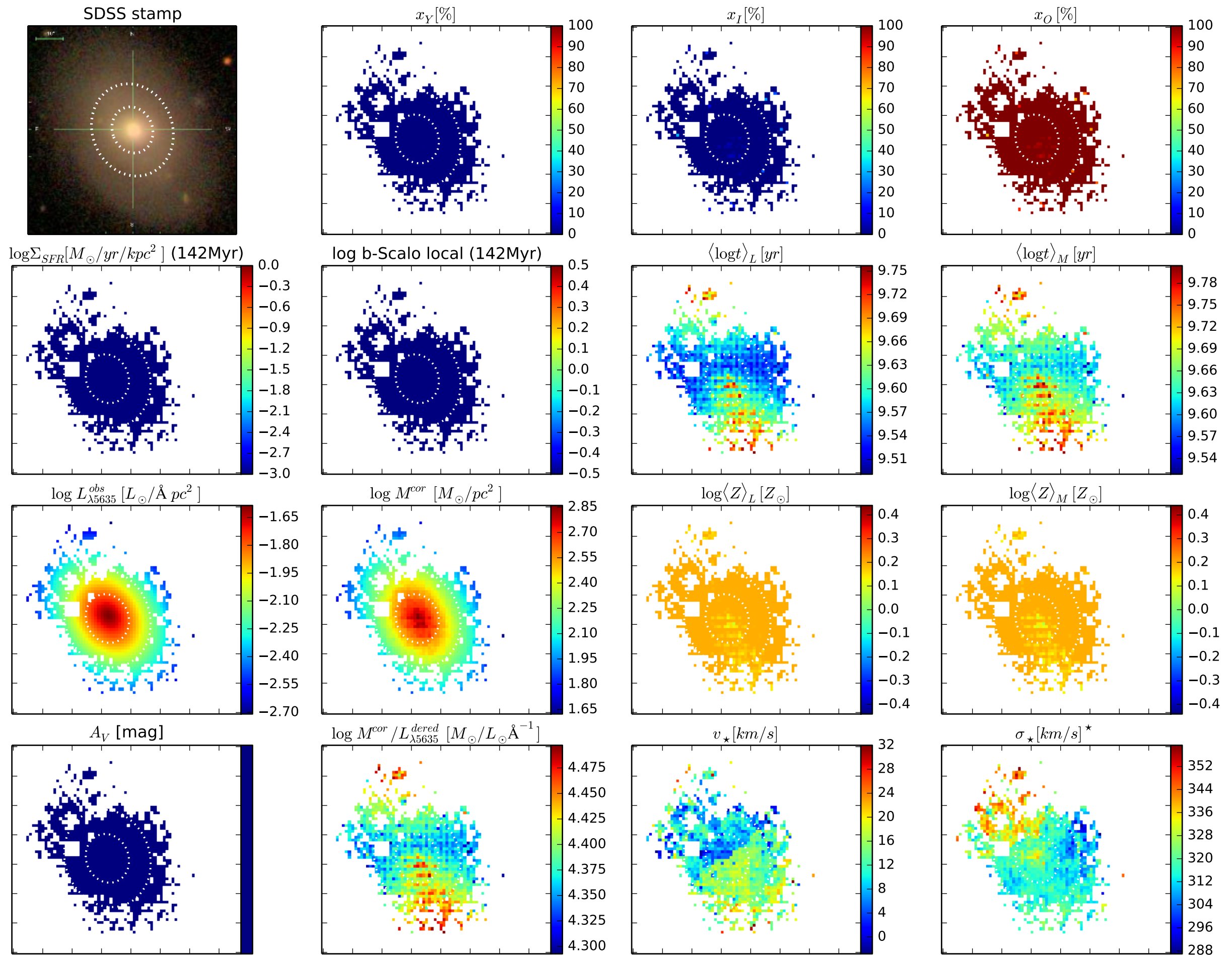


[Fig02] ... K0035 0.4.3 d14a512 w/base Bgsd6e || FWHM= 0.500000 dex ; $\Delta R=1.000000$ pix || NGC0364 || Disk





[Fig05] Properties maps || K0035 0.4.3 d14a512 w/base Bgsd6e || FWHM= 0.500000 dex ; $\Delta R=1.000000$ pix || NGC0364 || Disk



[Fig06] Z grad evol test || K0035 0.4.3 d14a512 w/base Bgsd6e || FWHM= 0.500000 dex ; $\Delta R=1.000000$ pix || NGC0364 || Disk

