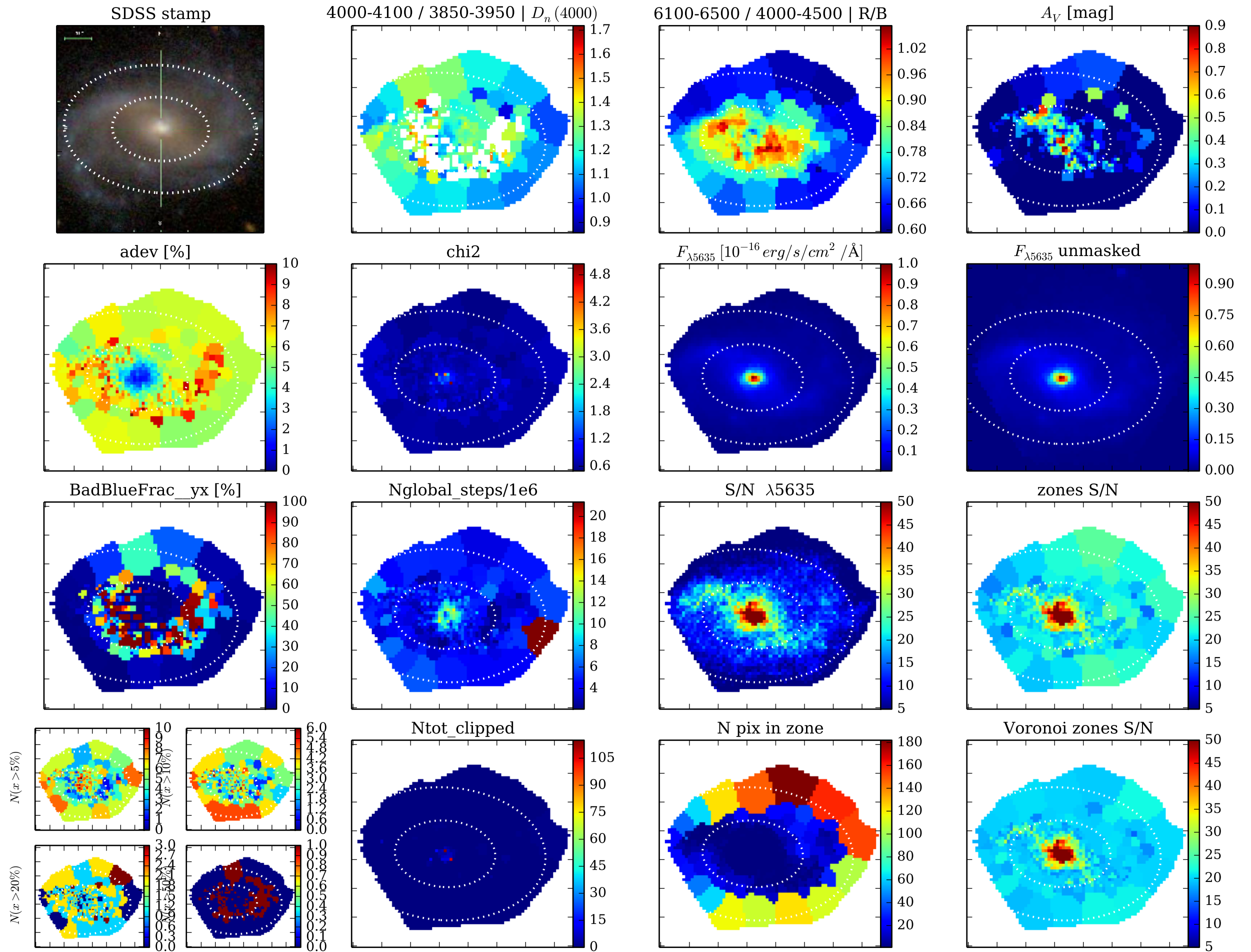
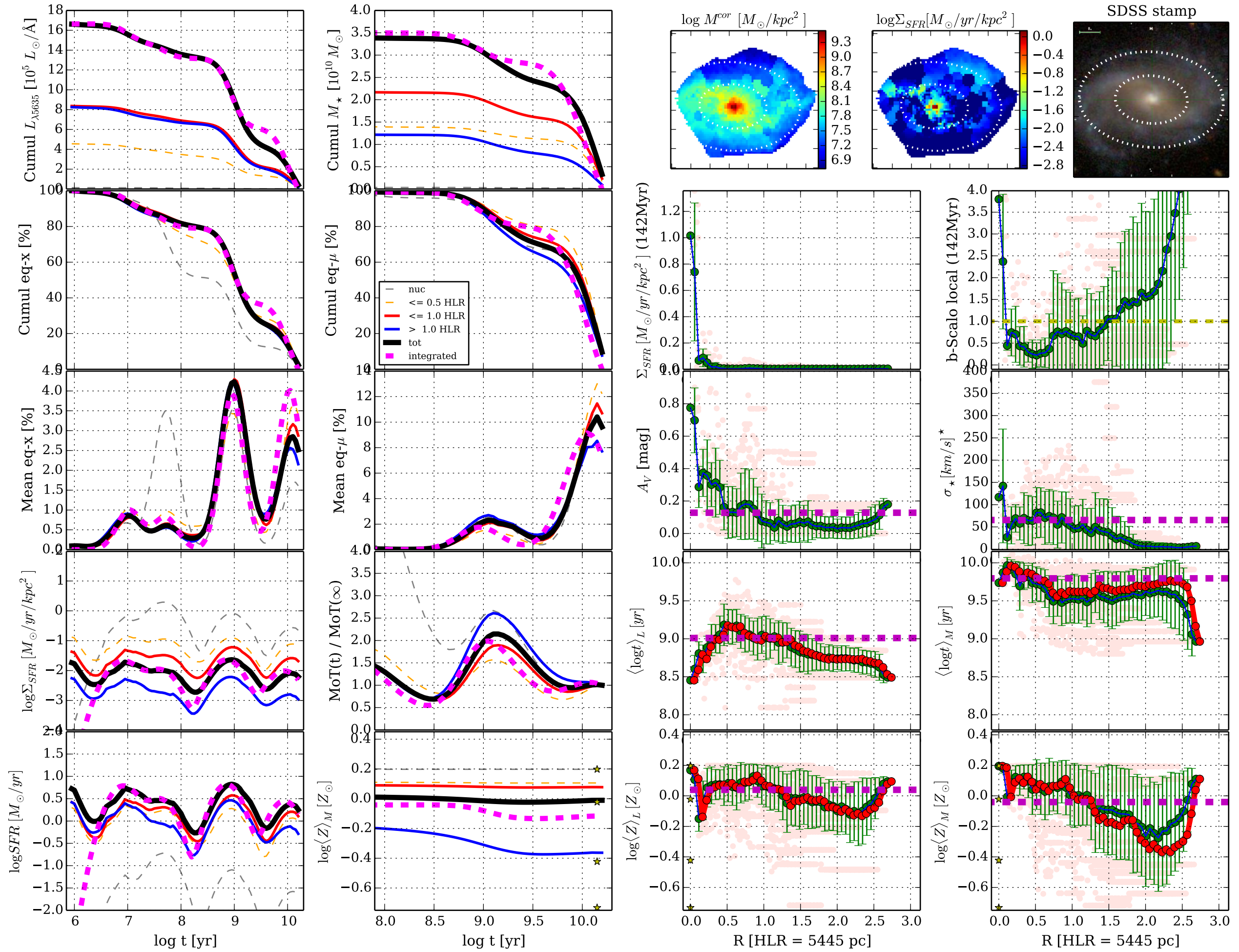


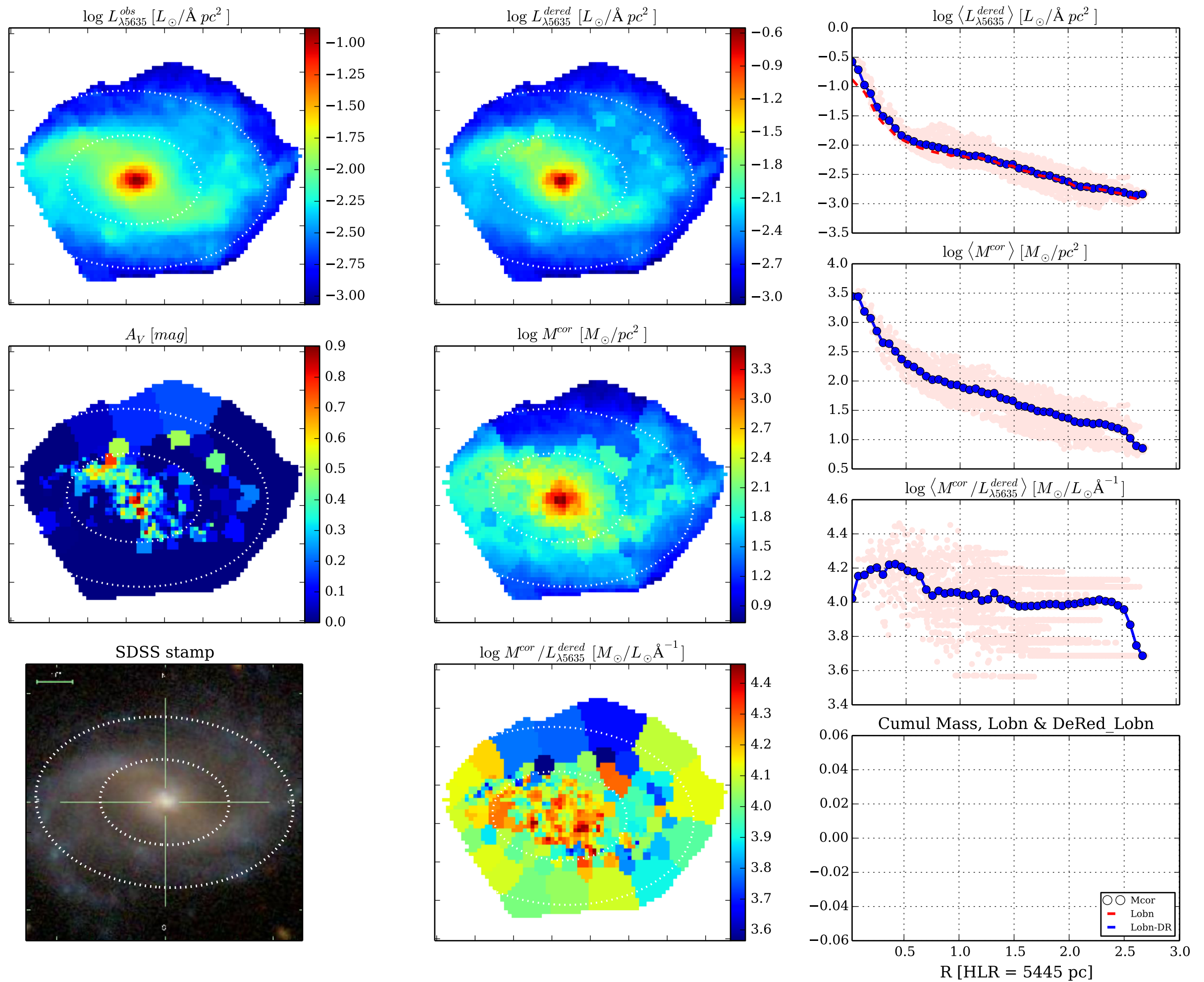
[Fig00] Data-&Fit Quality || K0003 0.4.5 d14a500 w/base Bgsd6e || FWHM= 0.50 dex ;  $\Delta R=1.0$  pix || NGC7819

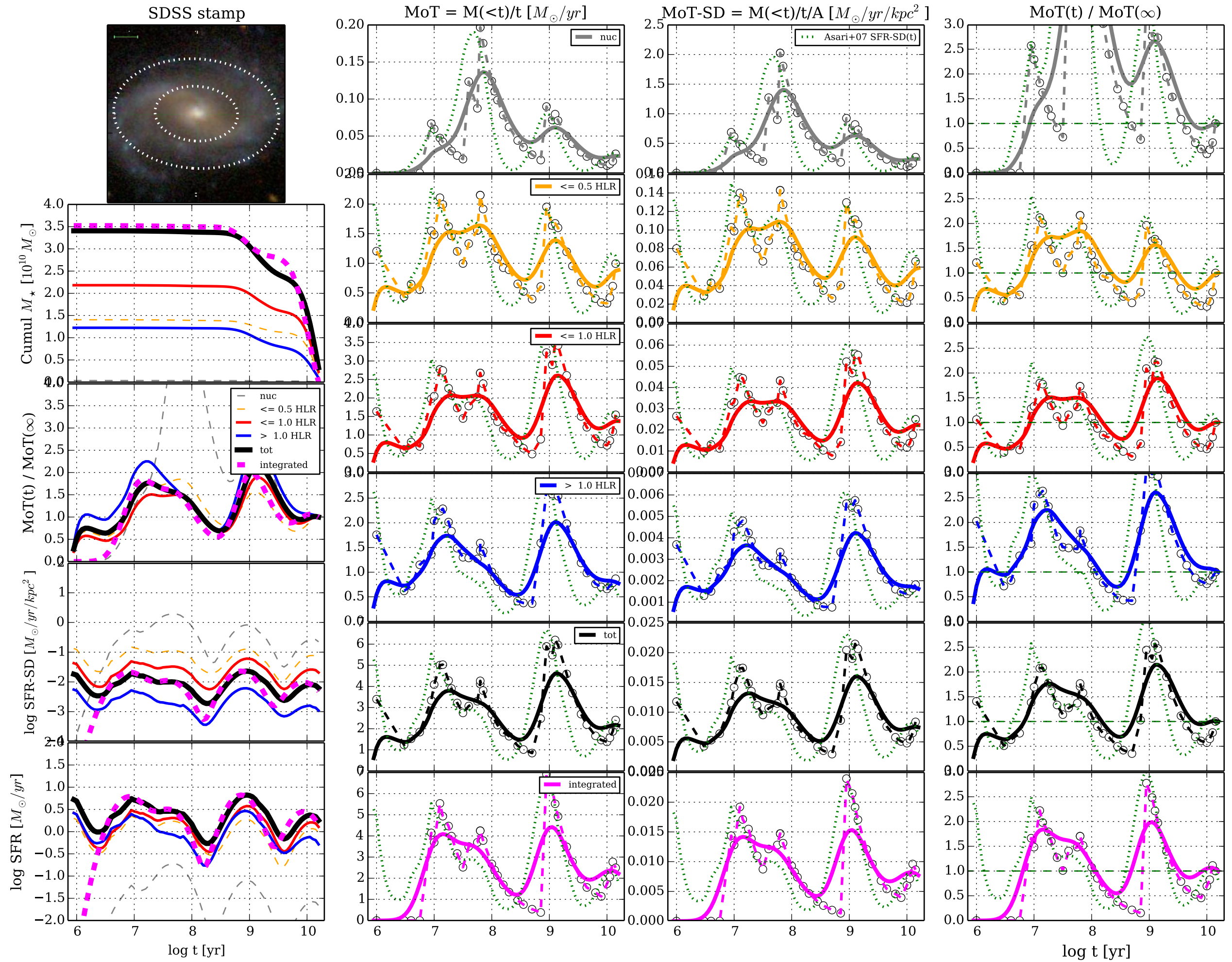


[Fig01] t & R profiles || K0003 0.4.5 d14a500 w/base Bgsd6e || FWHM= 0.50 dex ;  $\Delta R=1.0$  pix || NGC7819

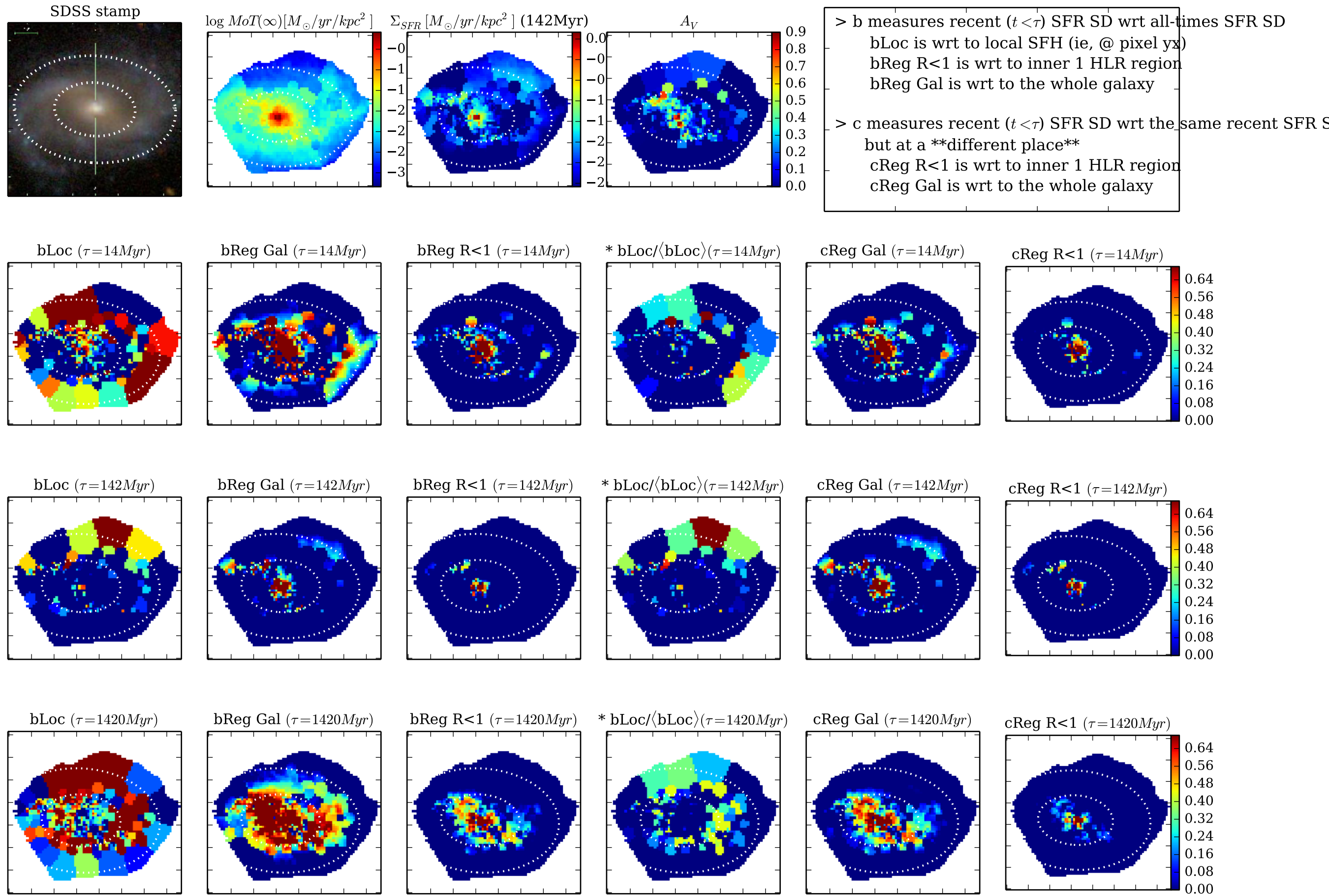


[Fig02] ... K0003 0.4.5 d14a500 w/base Bgsd6e|| FWHM= 0.50 dex ;  $\Delta R=1.0$  pix || NGC7819

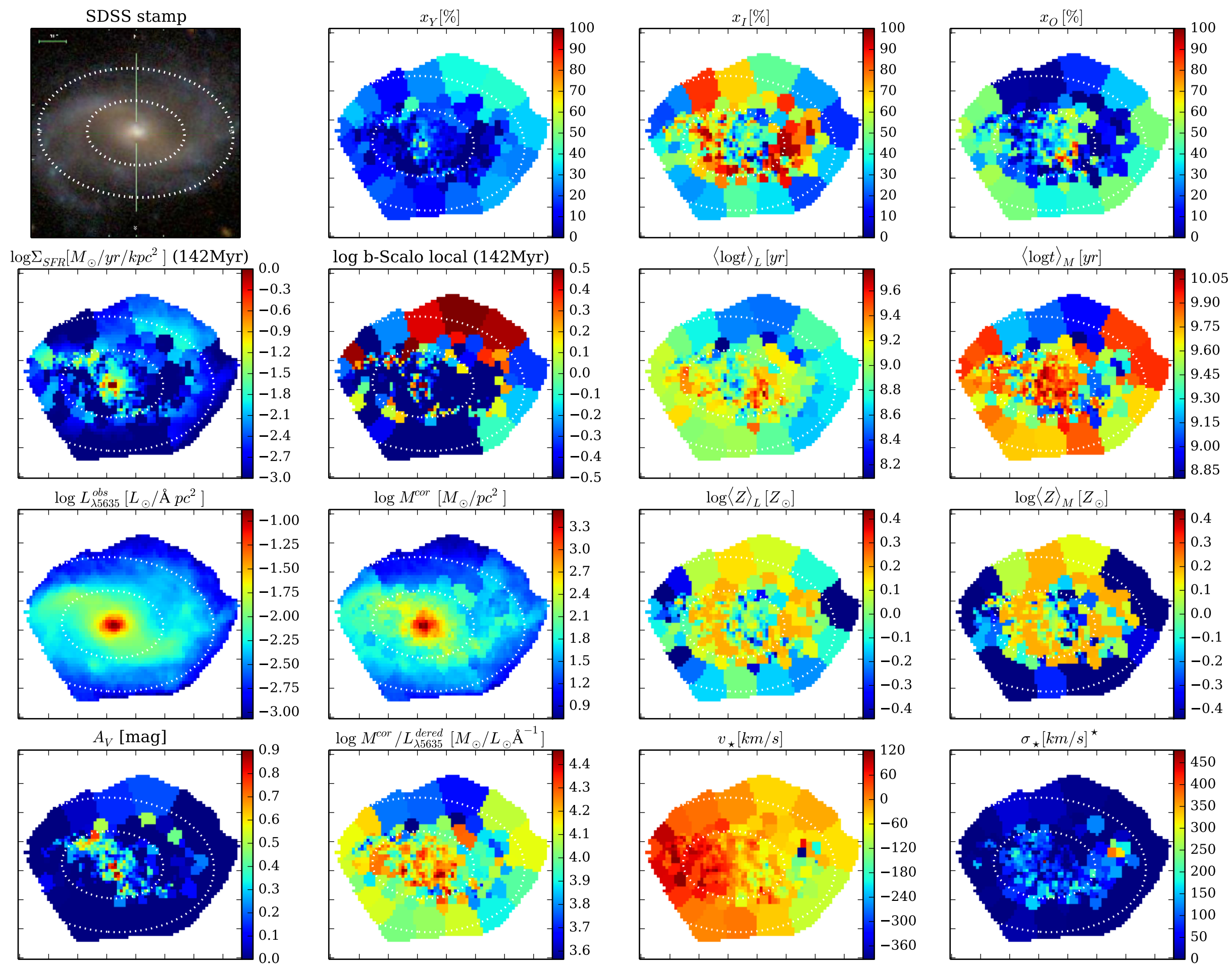




[Fig04] b & c-Scalo ... || K0003 0.4.5 d14a500 w/base Bgsd6e || FWHM= 0.50 dex ;  $\Delta R=1.0$  pix || NGC7819



[Fig05] Properties maps || K0003 0.4.5 d14a500 w/base Bgsd6e || FWHM= 0.50 dex ;  $\Delta R=1.0$  pix || NGC7819



[Fig06] Z grad evol test || K0003 0.4.5 d14a500 w/base Bgsd6e || FWHM= 0.50 dex ;  $\Delta R=1.0$  pix || NGC7819

