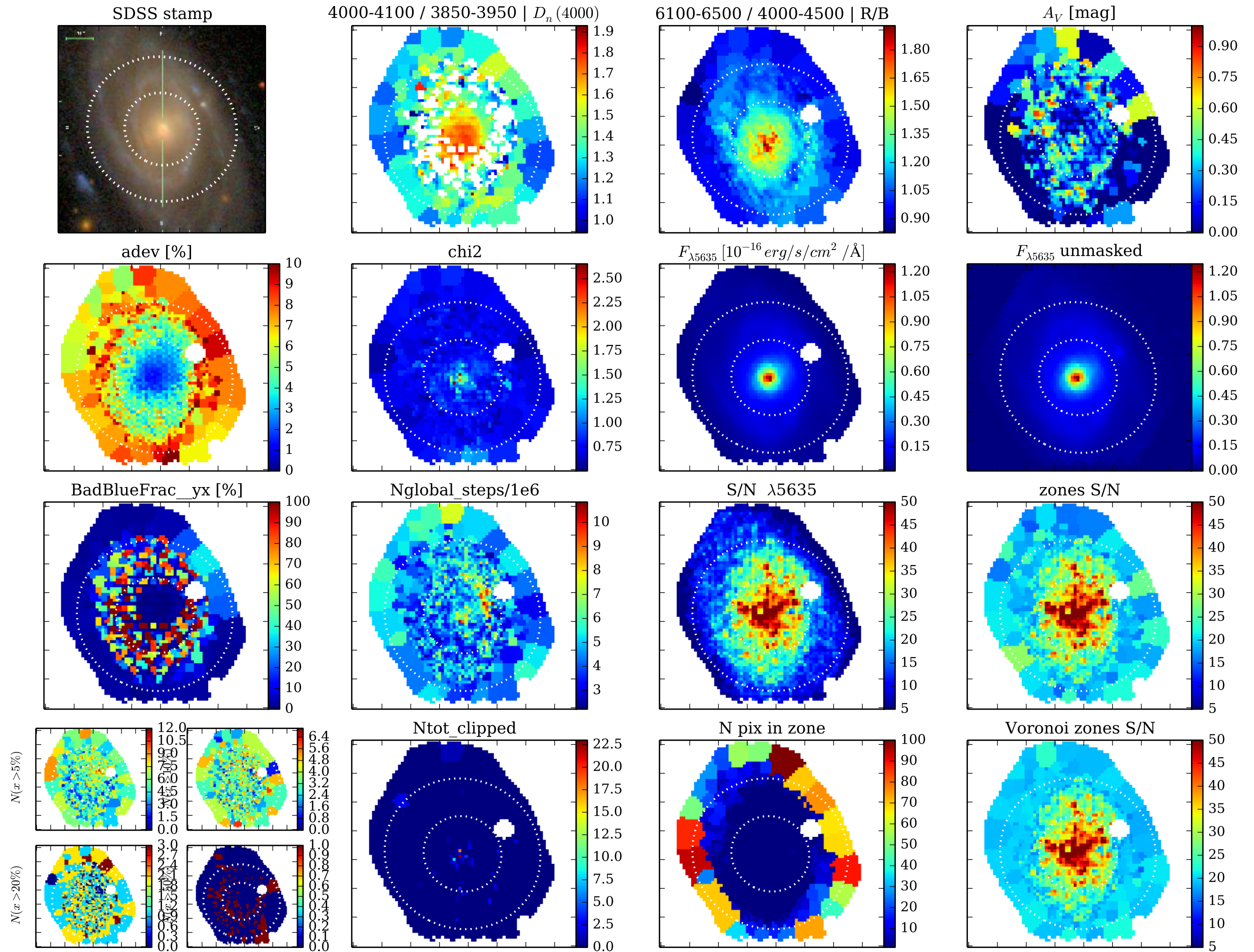
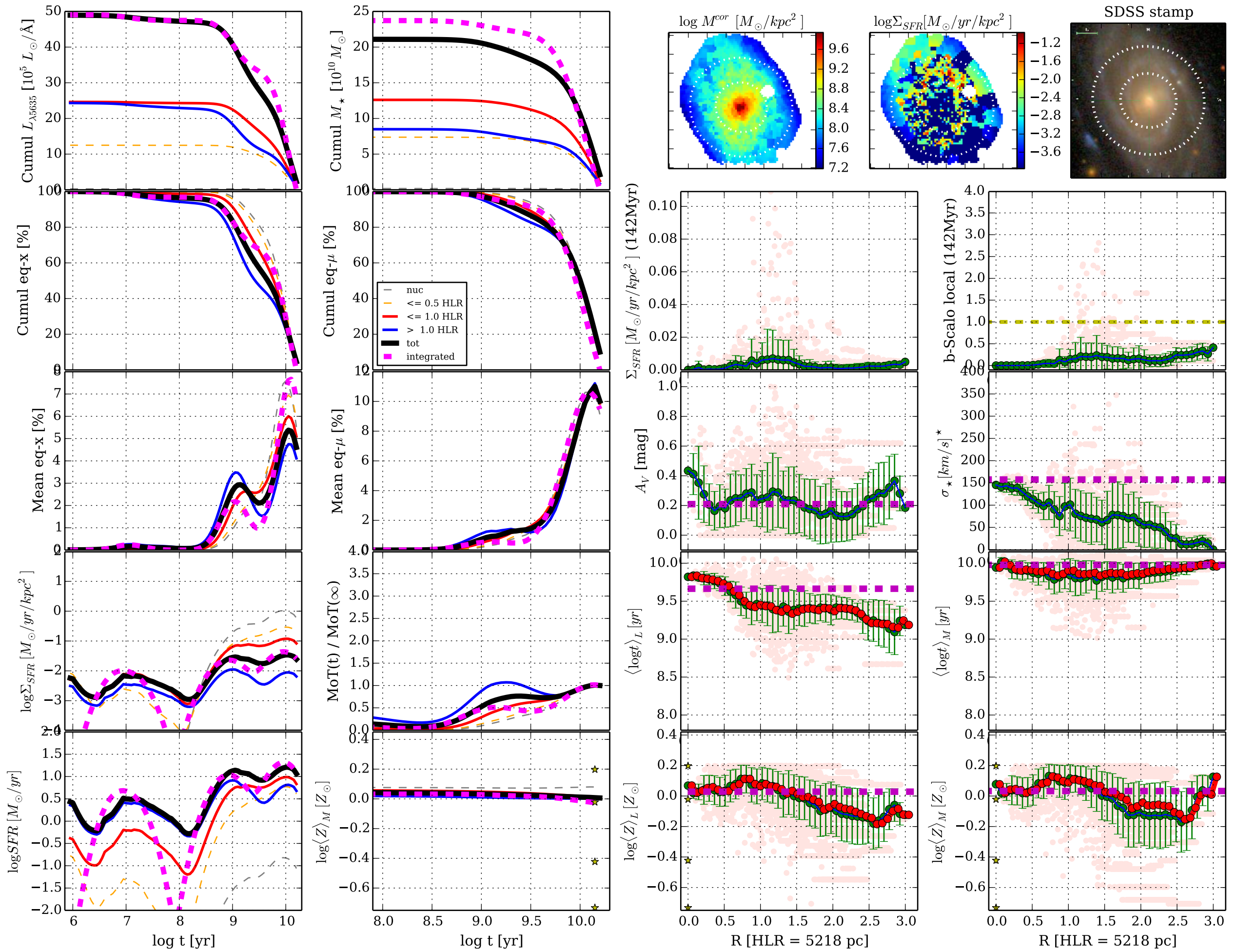


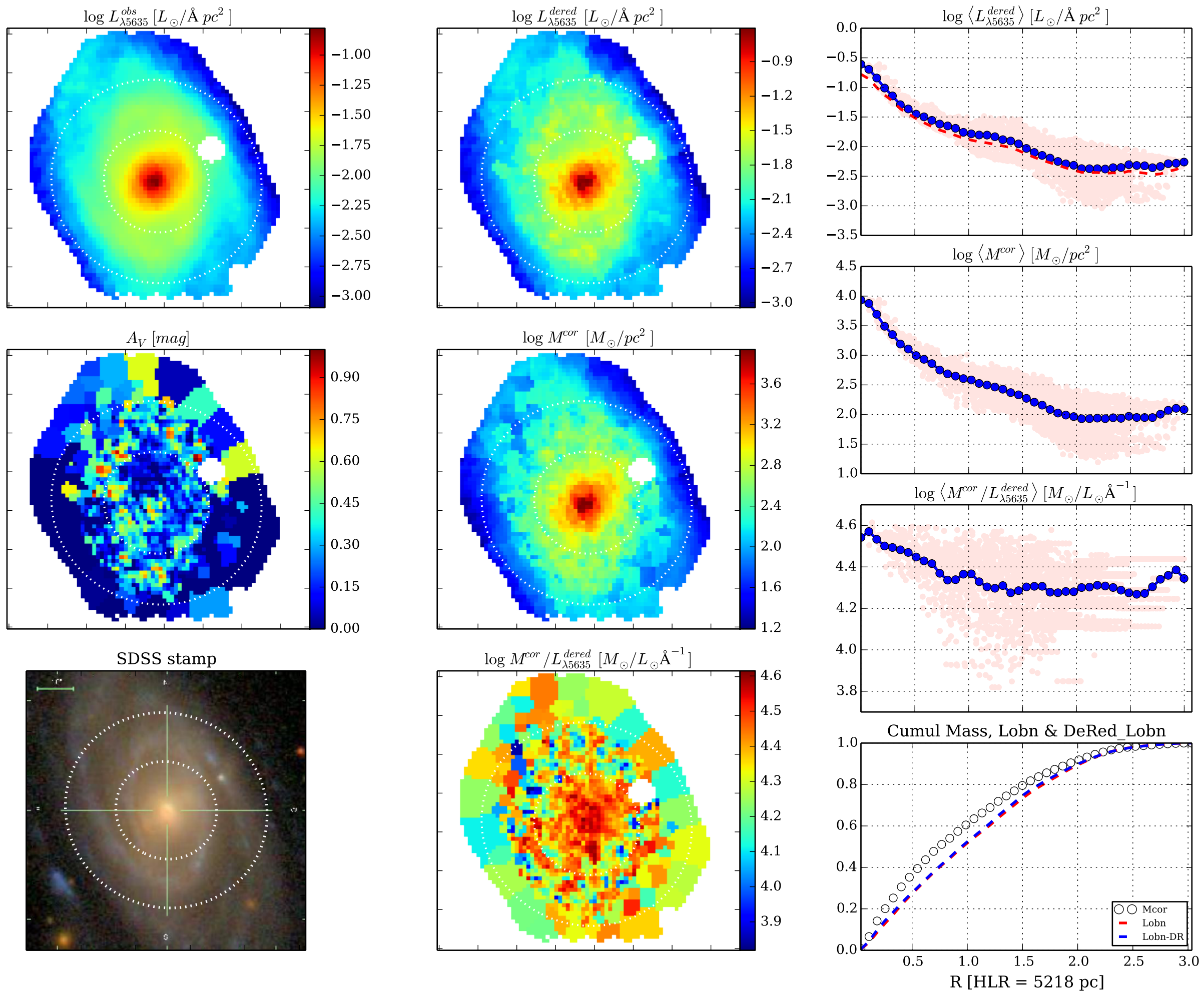
[Fig00] Data-&Fit Quality || K0010 0.4.5 d14a500 w/base Bgsd6e || FWHM= 0.50 dex ;  $\Delta R=1.0$  pix || NGC0036



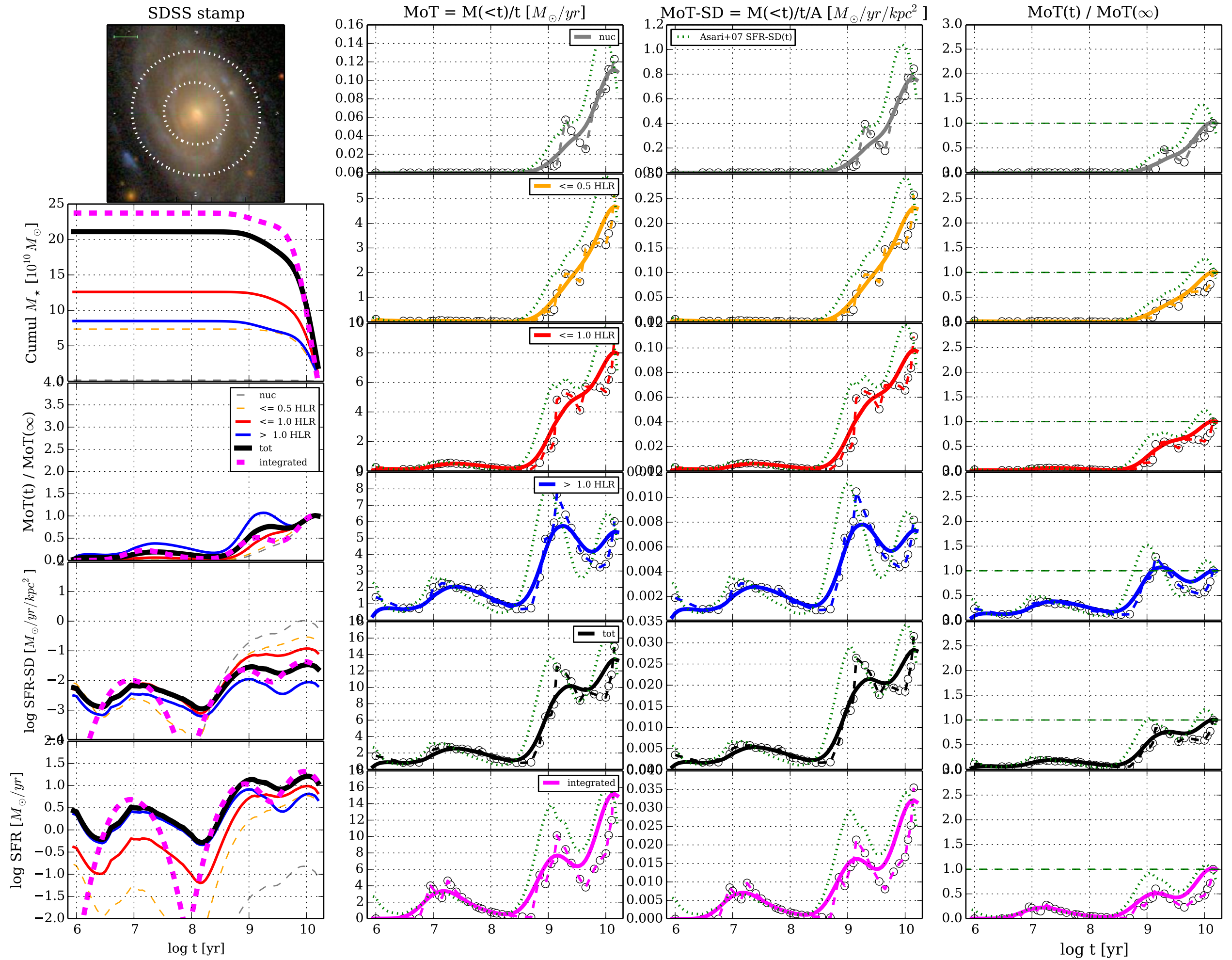
[Fig01] t & R profiles || K0010 0.4.5 d14a500 w/base Bgsd6e || FWHM= 0.50 dex ;  $\Delta R=1.0$  pix || NGC0036



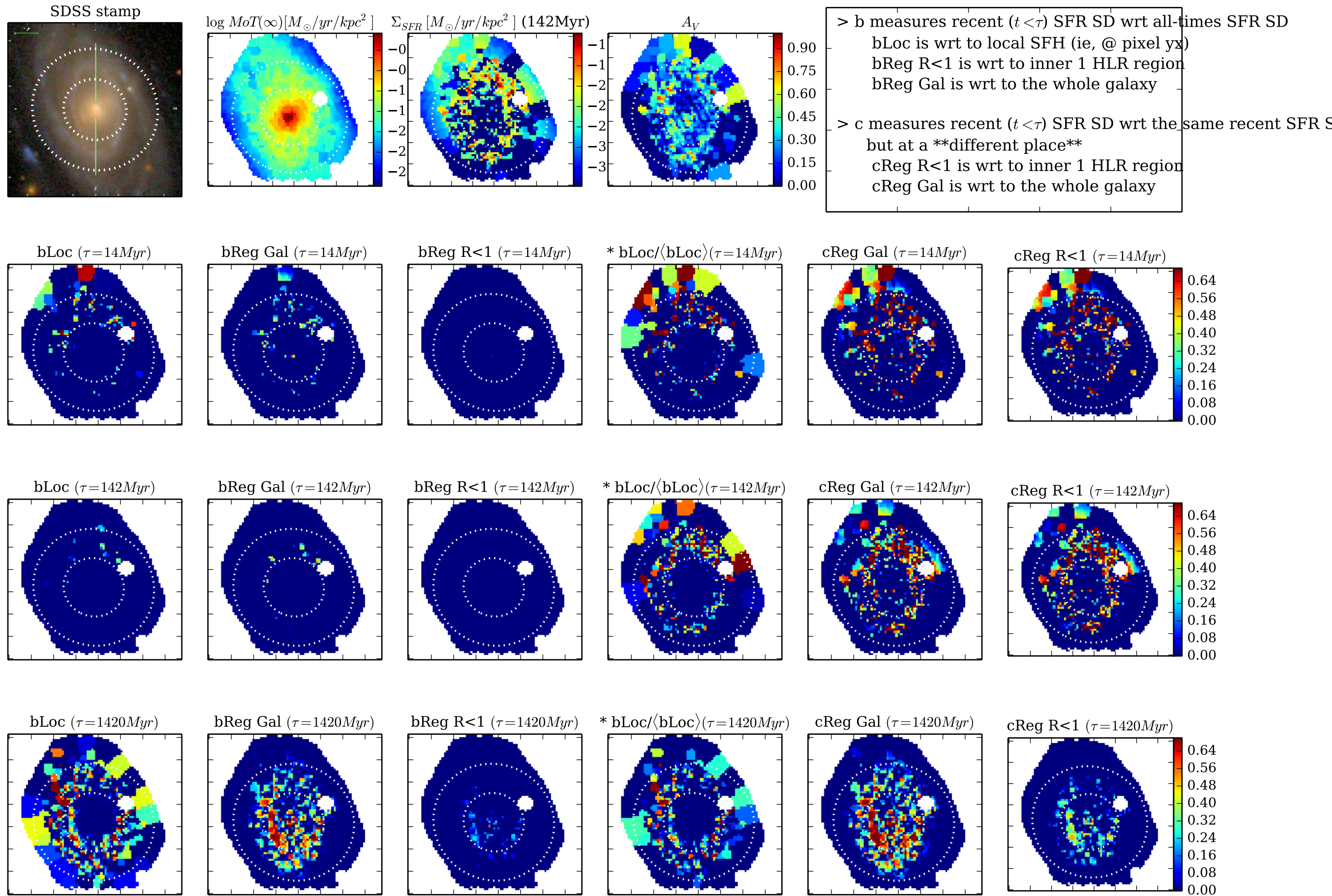
[Fig02] ... K0010 0.4.5 d14a500 w/base Bgsd6e|| FWHM= 0.50 dex ;  $\Delta R=1.0$  pix || NGC0036



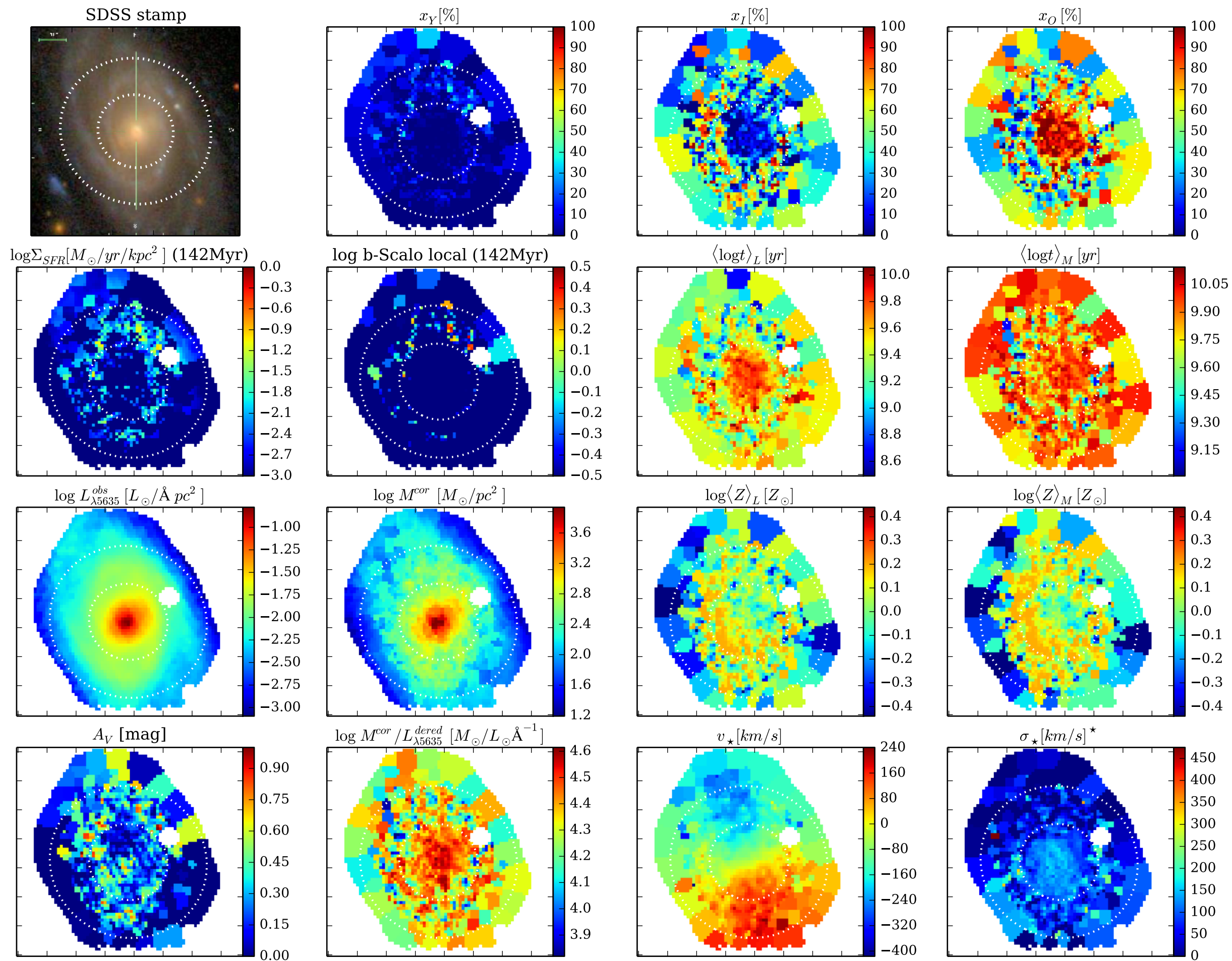




[Fig04] b & c-Scalo ... || K0010 0.4.5 d14a500 w/base Bgsd6e || FWHM= 0.50 dex ;  $\Delta R=1.0$  pix || NGC0036



[Fig05] Properties maps || K0010 0.4.5 d14a500 w/base Bgsd6e || FWHM= 0.50 dex ;  $\Delta R=1.0$  pix || NGC0036





[Fig06] Z grad evol test || K0010 0.4.5 d14a500 w/base Bgsd6e || FWHM= 0.50 dex ;  $\Delta R=1.0$  pix || NGC0036

