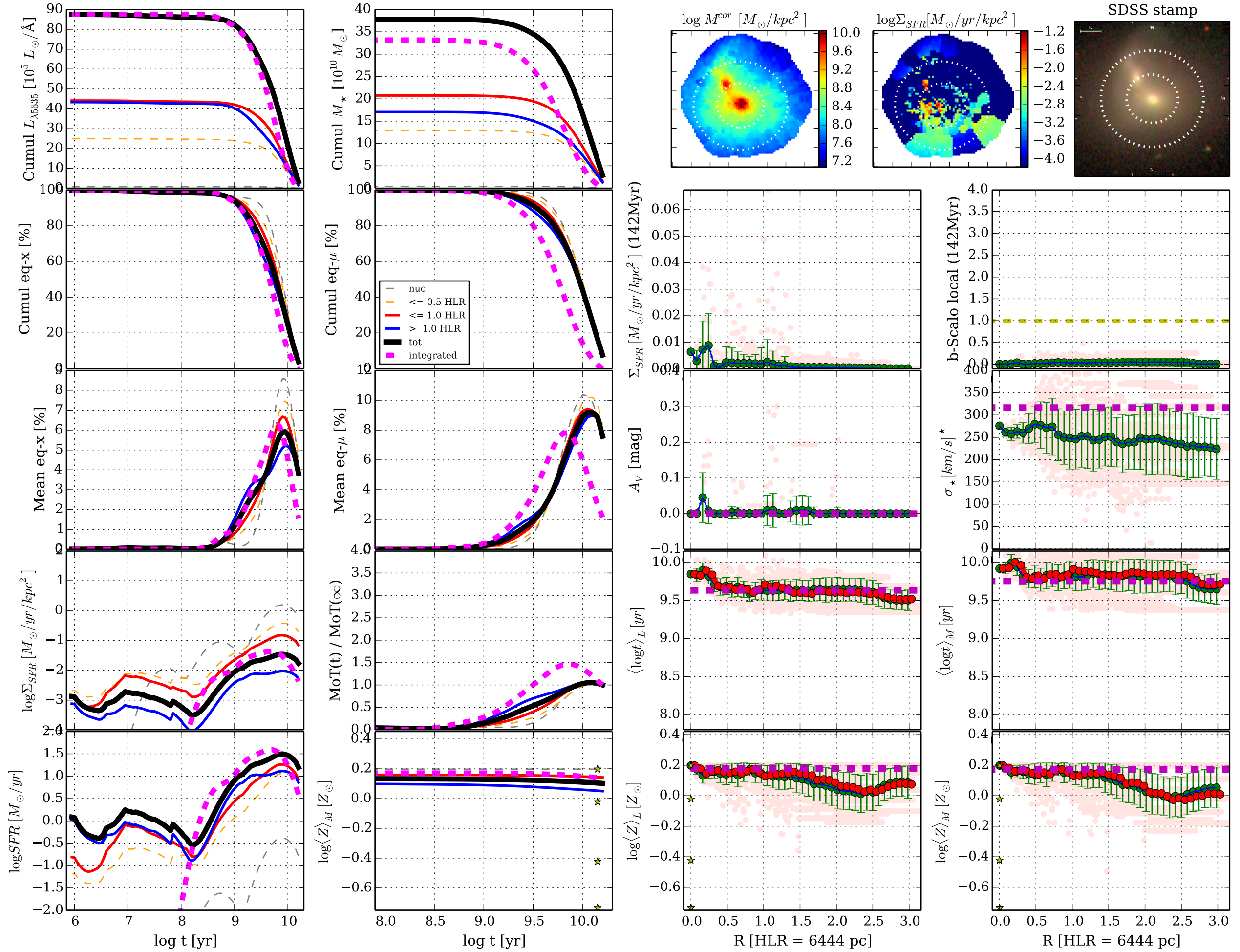
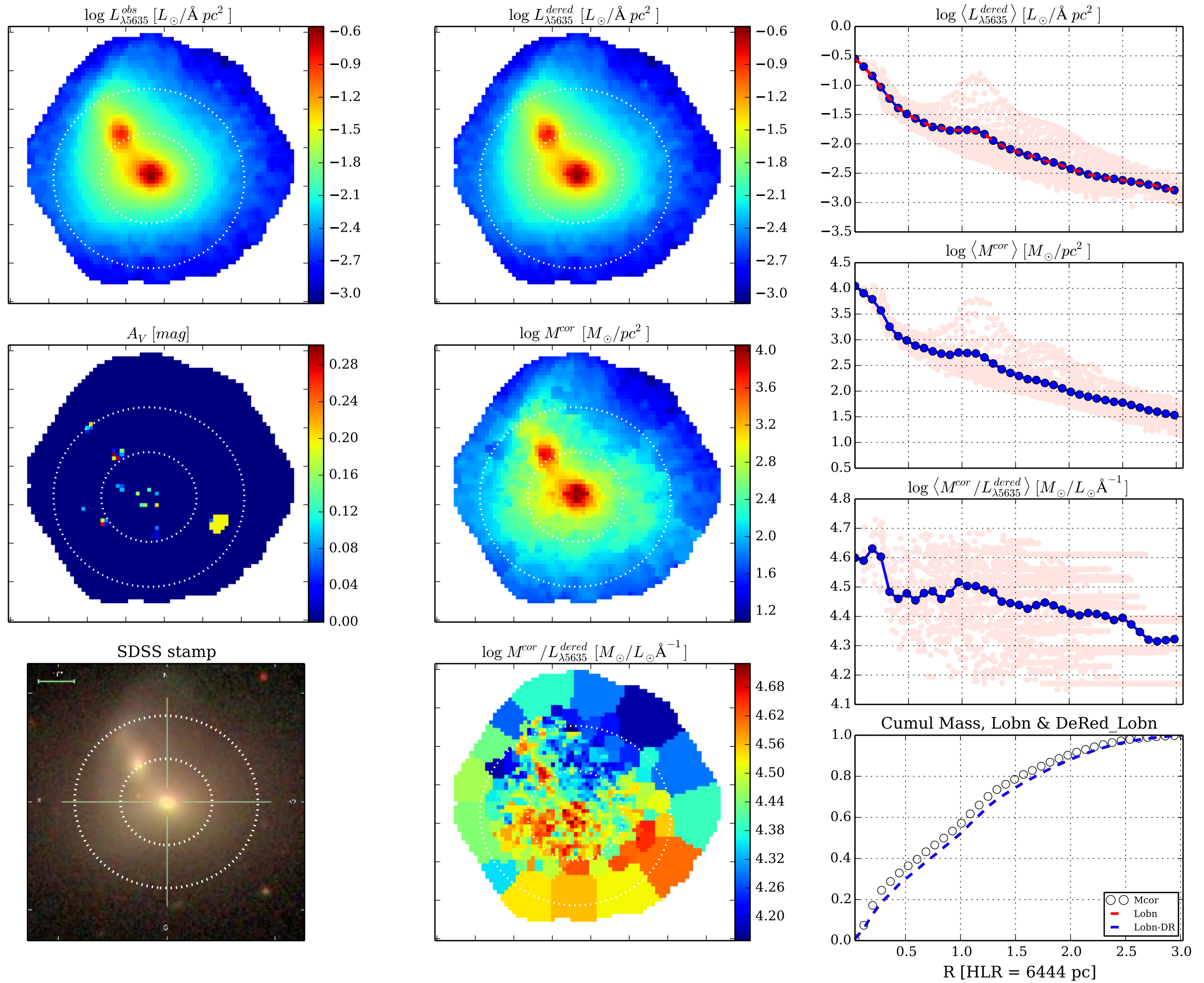
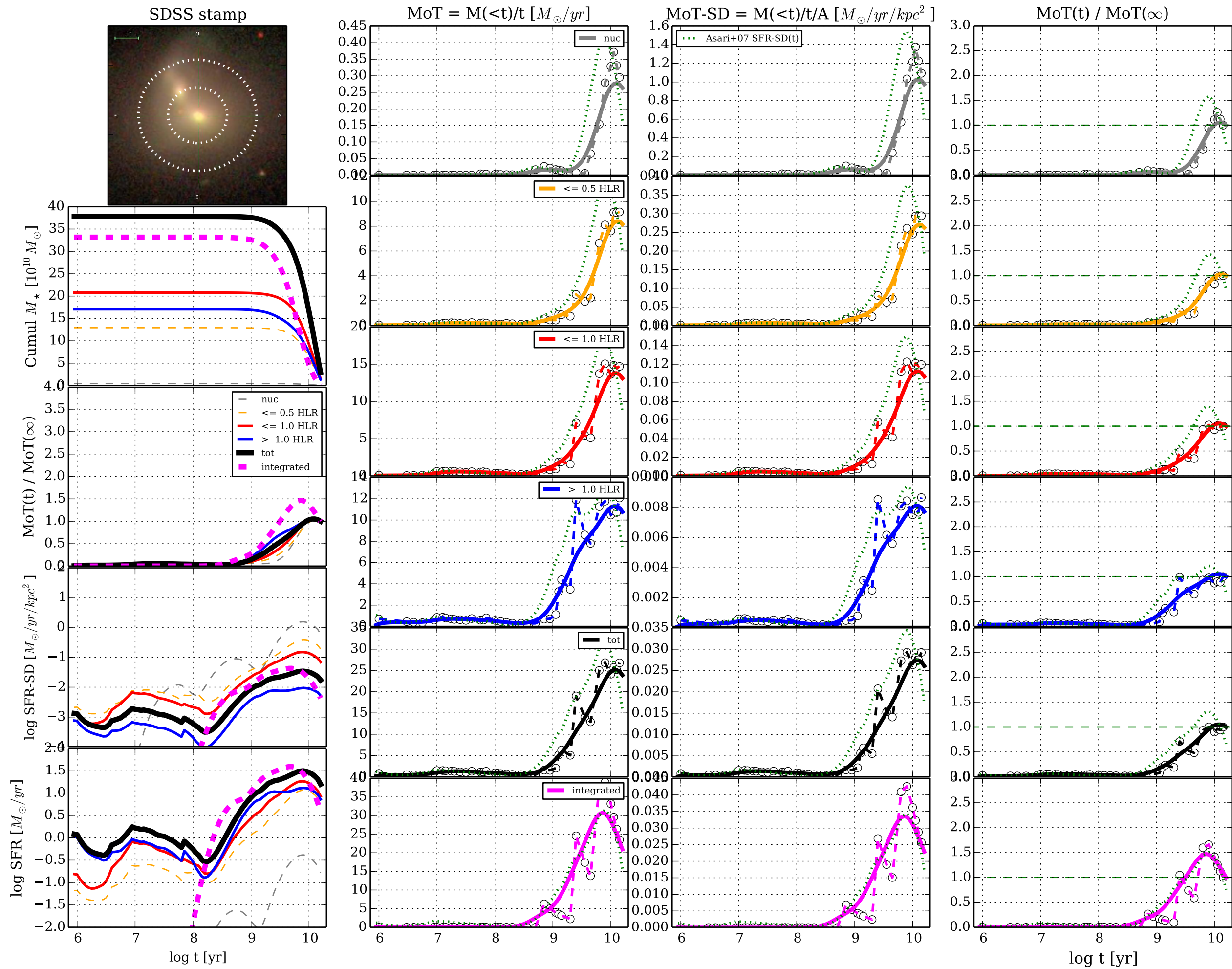


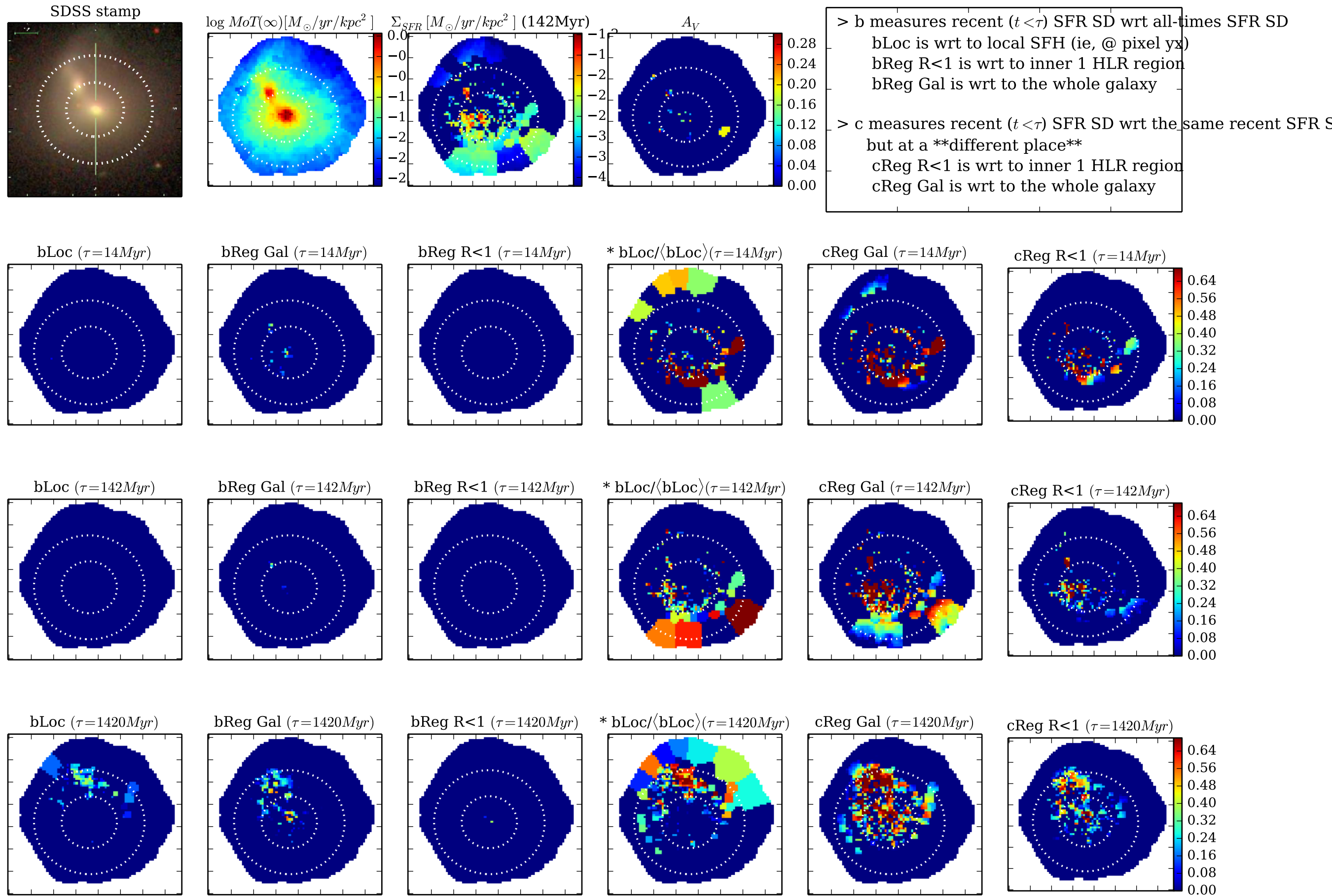
[Fig01] t & R profiles || K0360 0.4.5 d14a500 w/base Bgsd6e || FWHM= 0.50 dex ; $\Delta R=1.0$ pix || NGC3406NED01



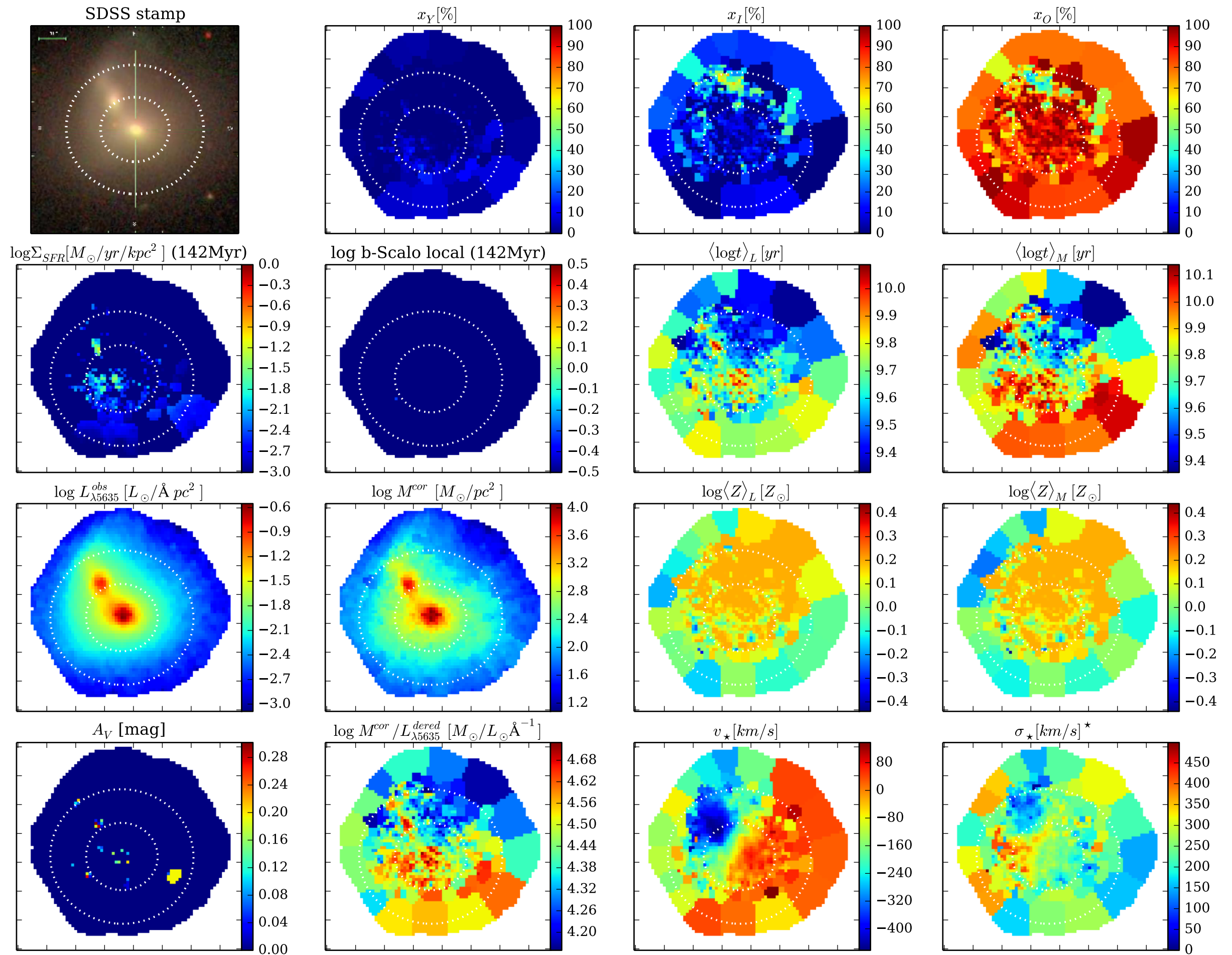
[Fig02] ... K0360 0.4.5 d14a500 w/base Bgsd6e || FWHM= 0.50 dex ; $\Delta R=1.0$ pix || NGC3406NED01







[Fig05] Properties maps || K0360 0.4.5 d14a500 w/base Bgsd6e || FWHM= 0.50 dex ; $\Delta R=1.0$ pix || NGC3406NED01



[Fig06] Z grad evol test || K0360 0.4.5 d14a500 w/base Bgsd6e || FWHM= 0.50 dex ; $\Delta R=1.0$ pix || NGC3406NED01

