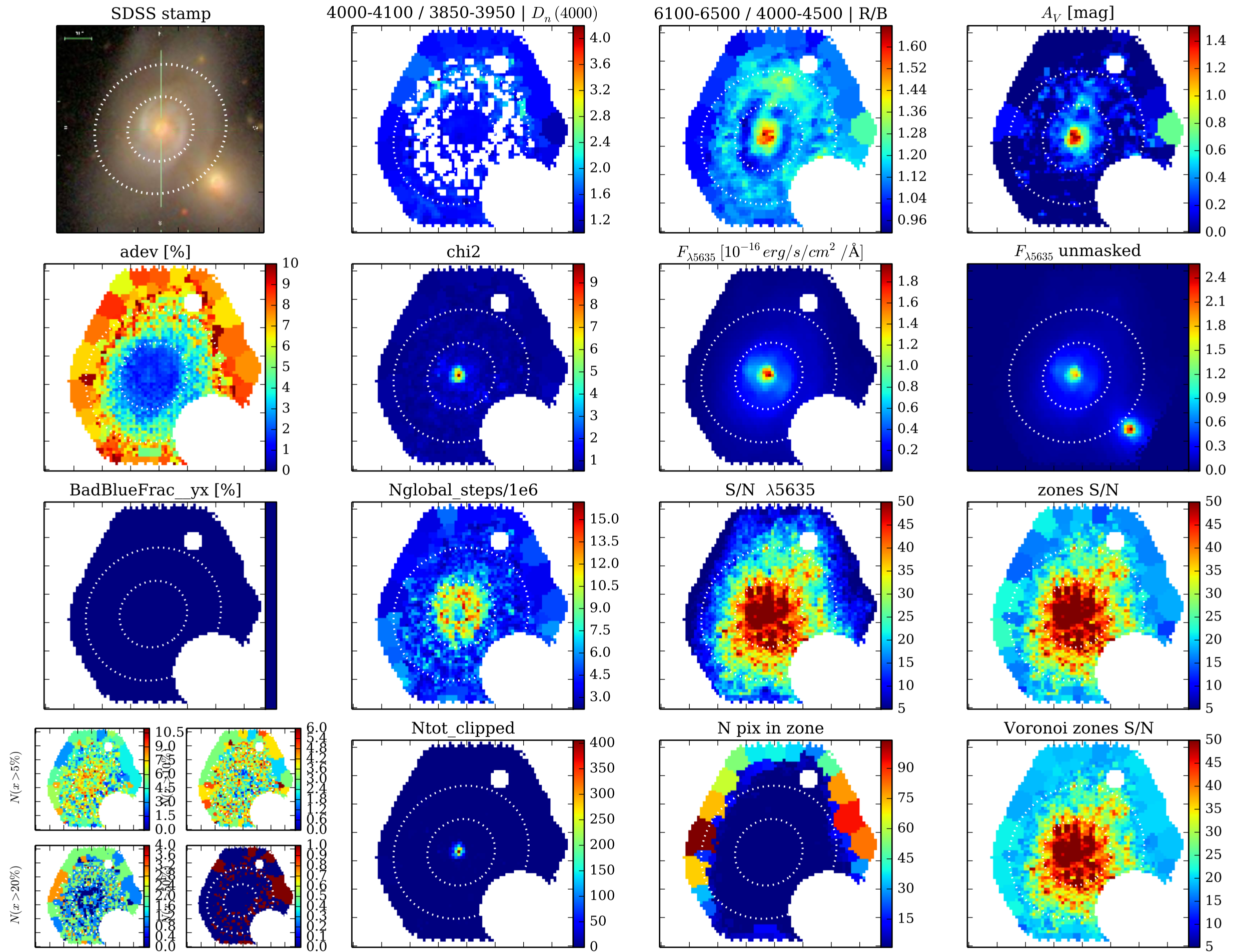
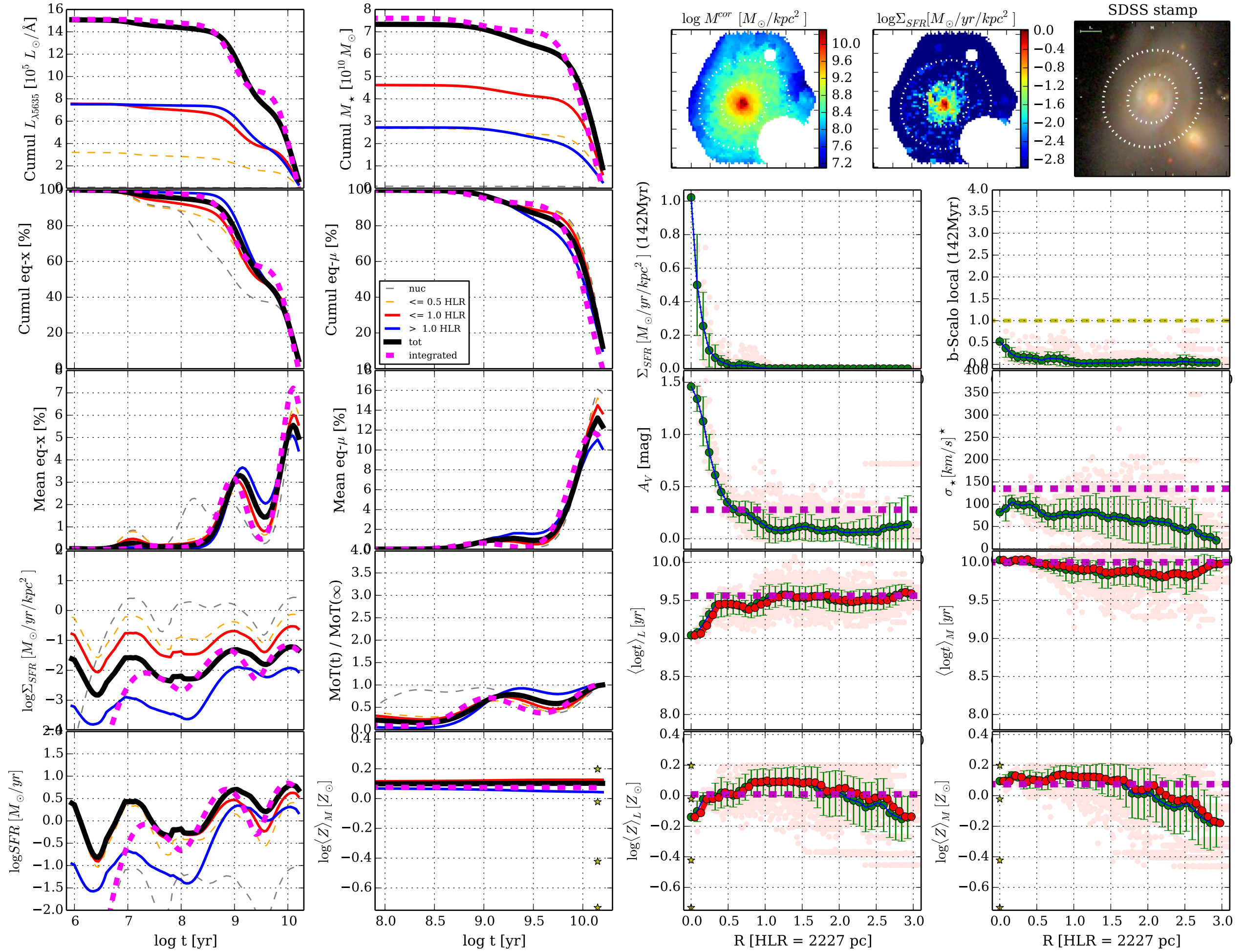


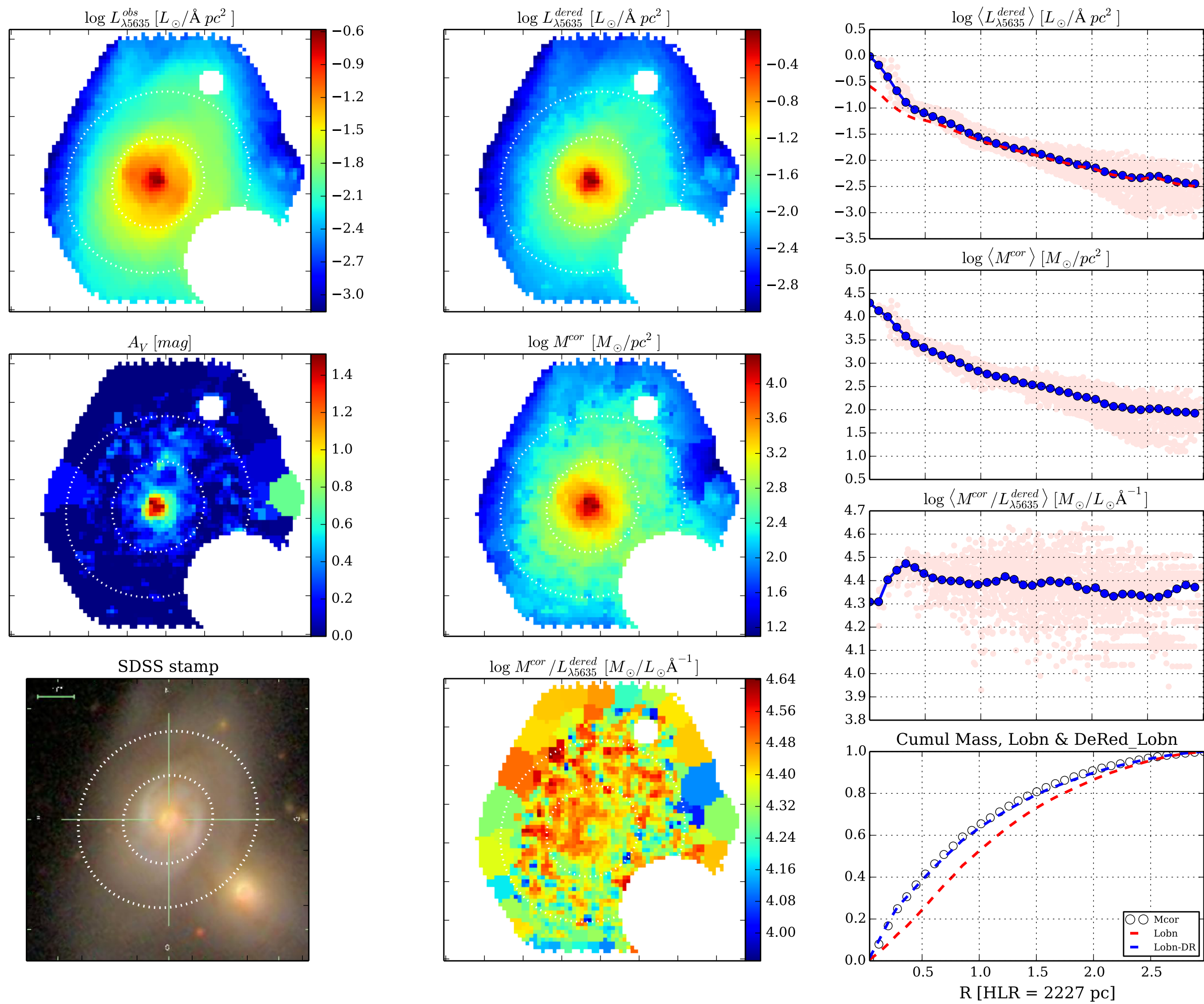
[Fig00] Data-&Fit Quality || K0795 0.4.5 d14a500 w/base Bgsd6e || FWHM= 0.50 dex ; $\Delta R=1.0$ pix || NGC5930

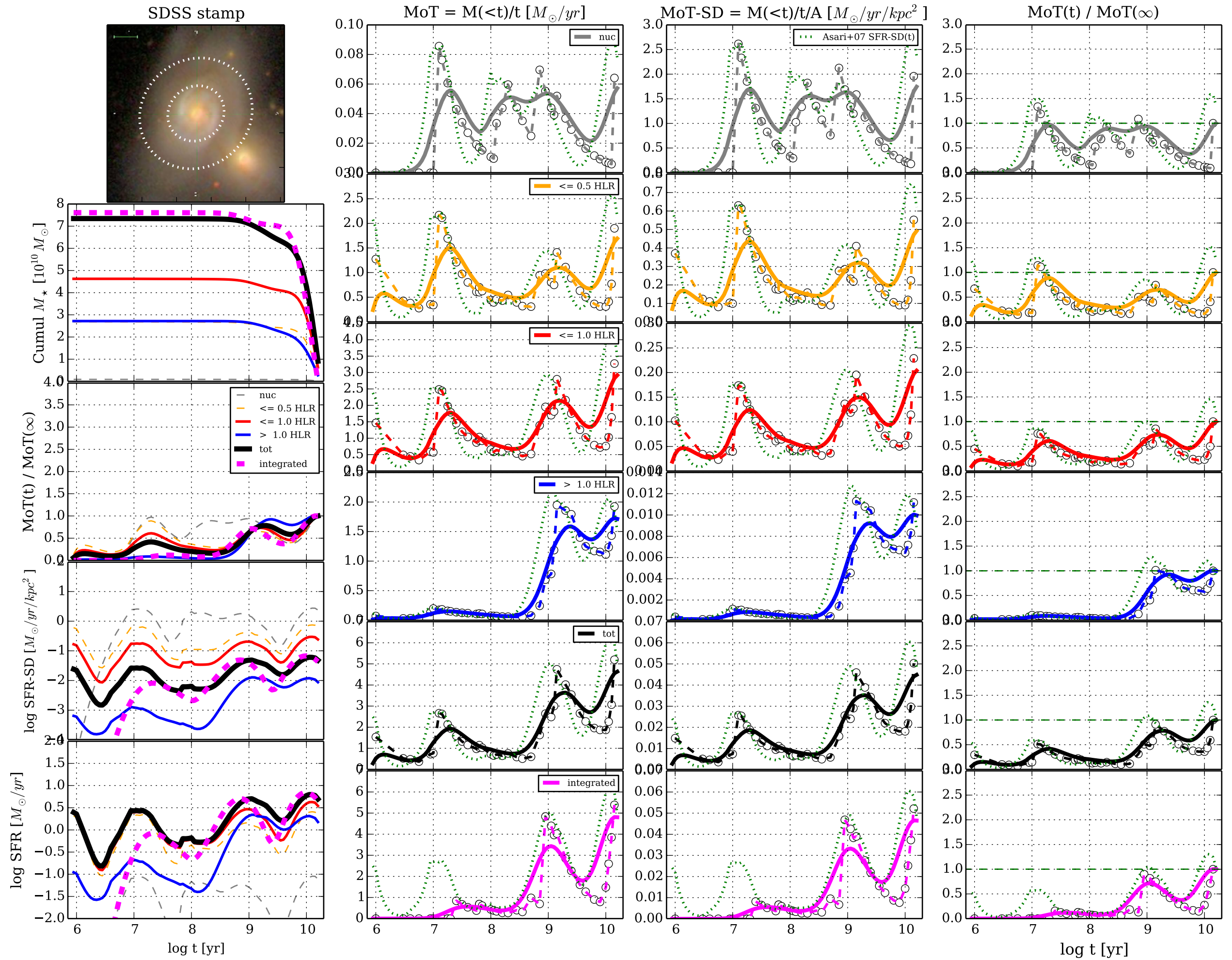


[Fig01] t & R profiles || K0795 0.4.5 d14a500 w/base Bgsd6e || FWHM= 0.50 dex ; $\Delta R=1.0$ pix || NGC5930

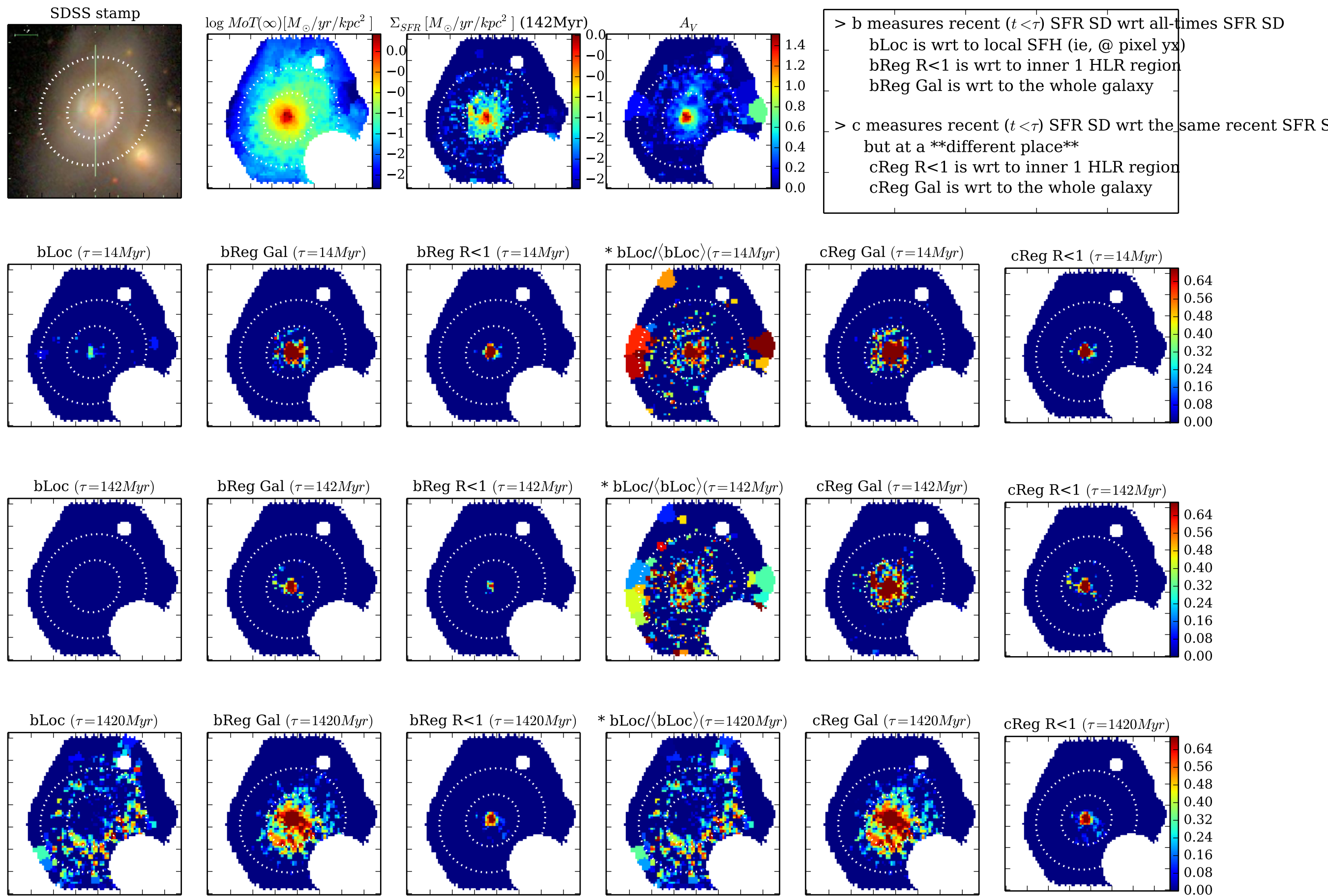


[Fig02] ... K0795 0.4.5 d14a500 w/base Bgsd6e|| FWHM= 0.50 dex ; $\Delta R=1.0$ pix || NGC5930

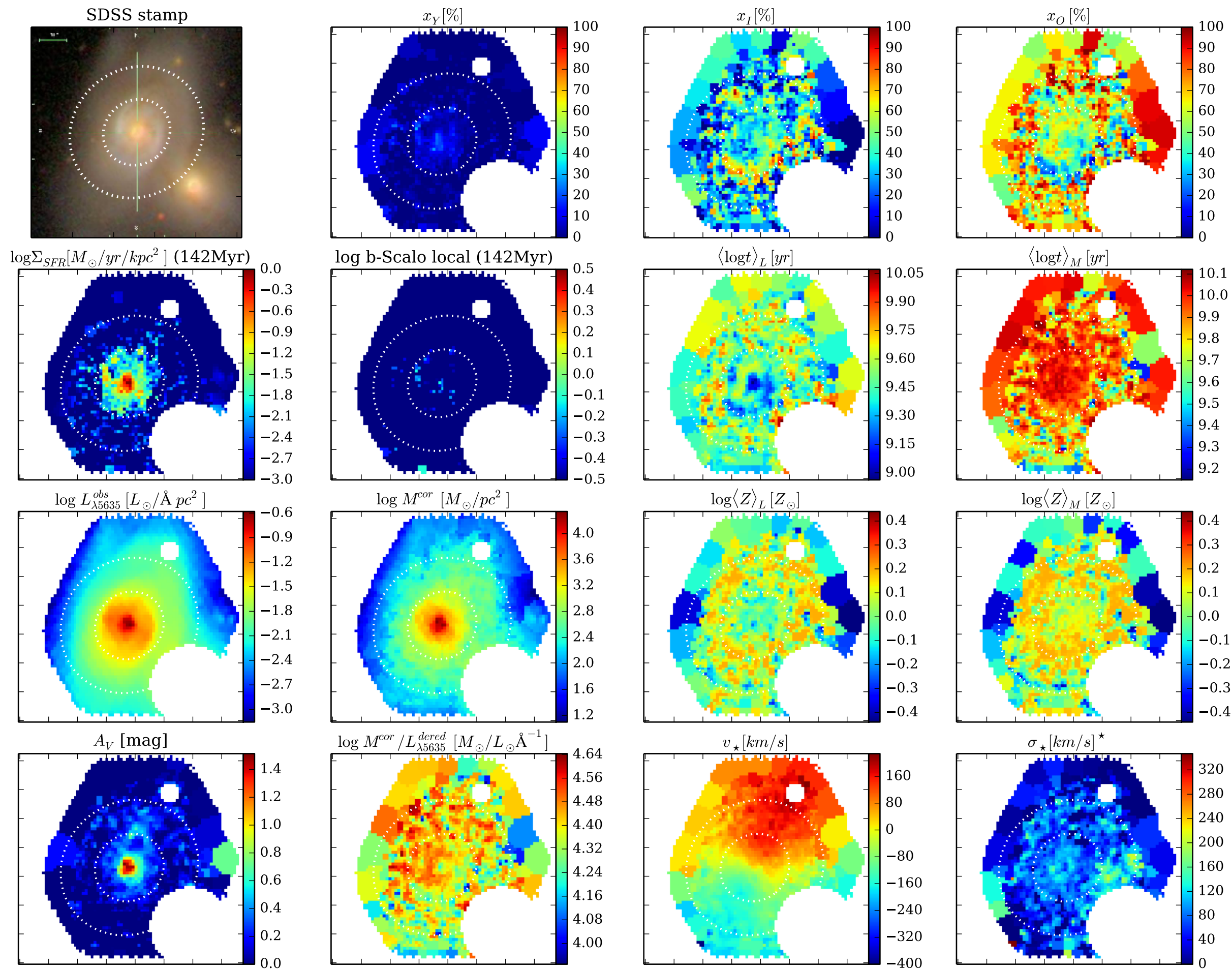




[Fig04] b & c-Scalo ... || K0795 0.4.5 d14a500 w/base Bgsd6e || FWHM= 0.50 dex ; $\Delta R=1.0$ pix || NGC5930



[Fig05] Properties maps || K0795 0.4.5 d14a500 w/base Bgsd6e || FWHM= 0.50 dex ; $\Delta R=1.0$ pix || NGC5930



[Fig06] Z grad evol test || K0795 0.4.5 d14a500 w/base Bgsd6e || FWHM= 0.50 dex ; $\Delta R=1.0$ pix || NGC5930

