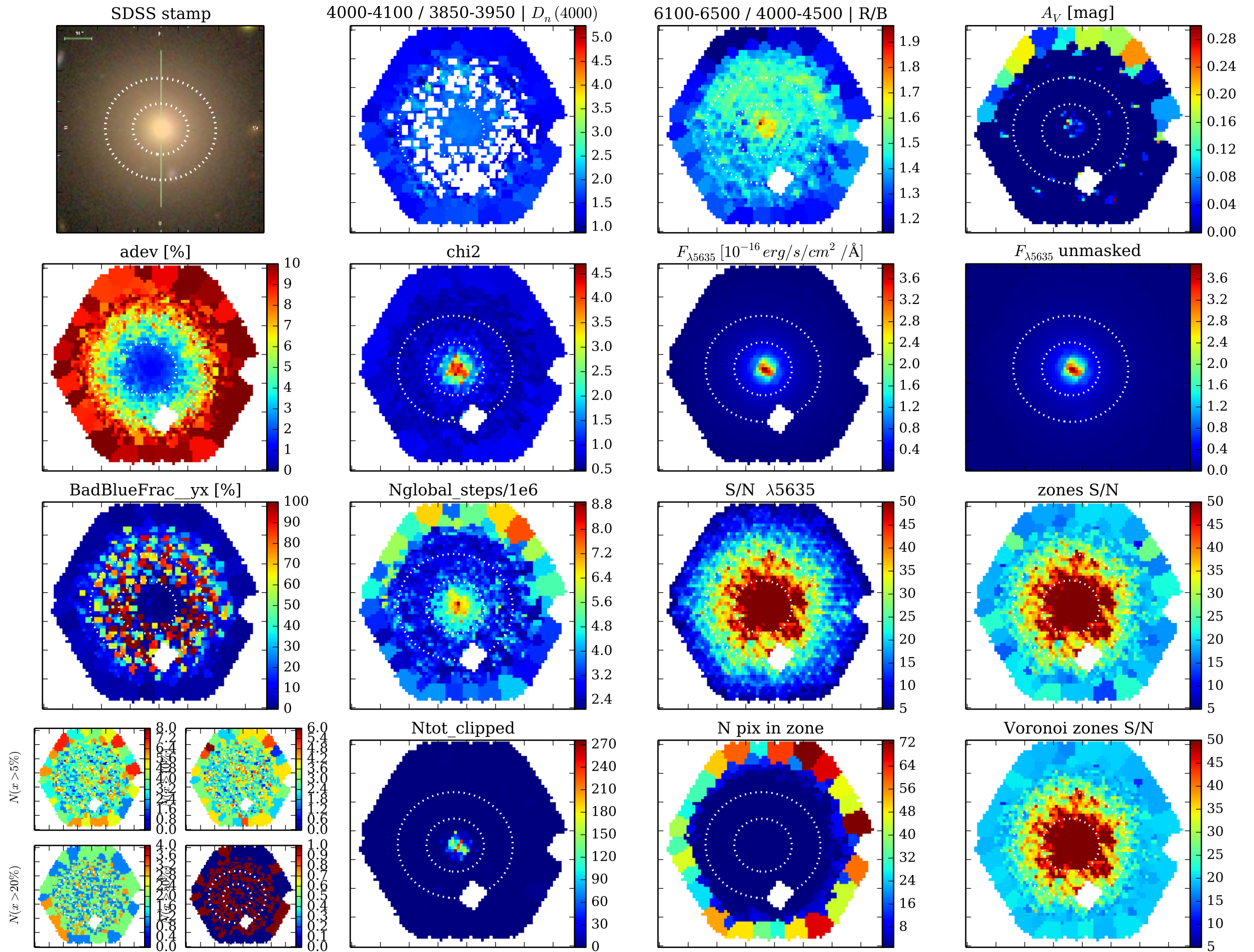
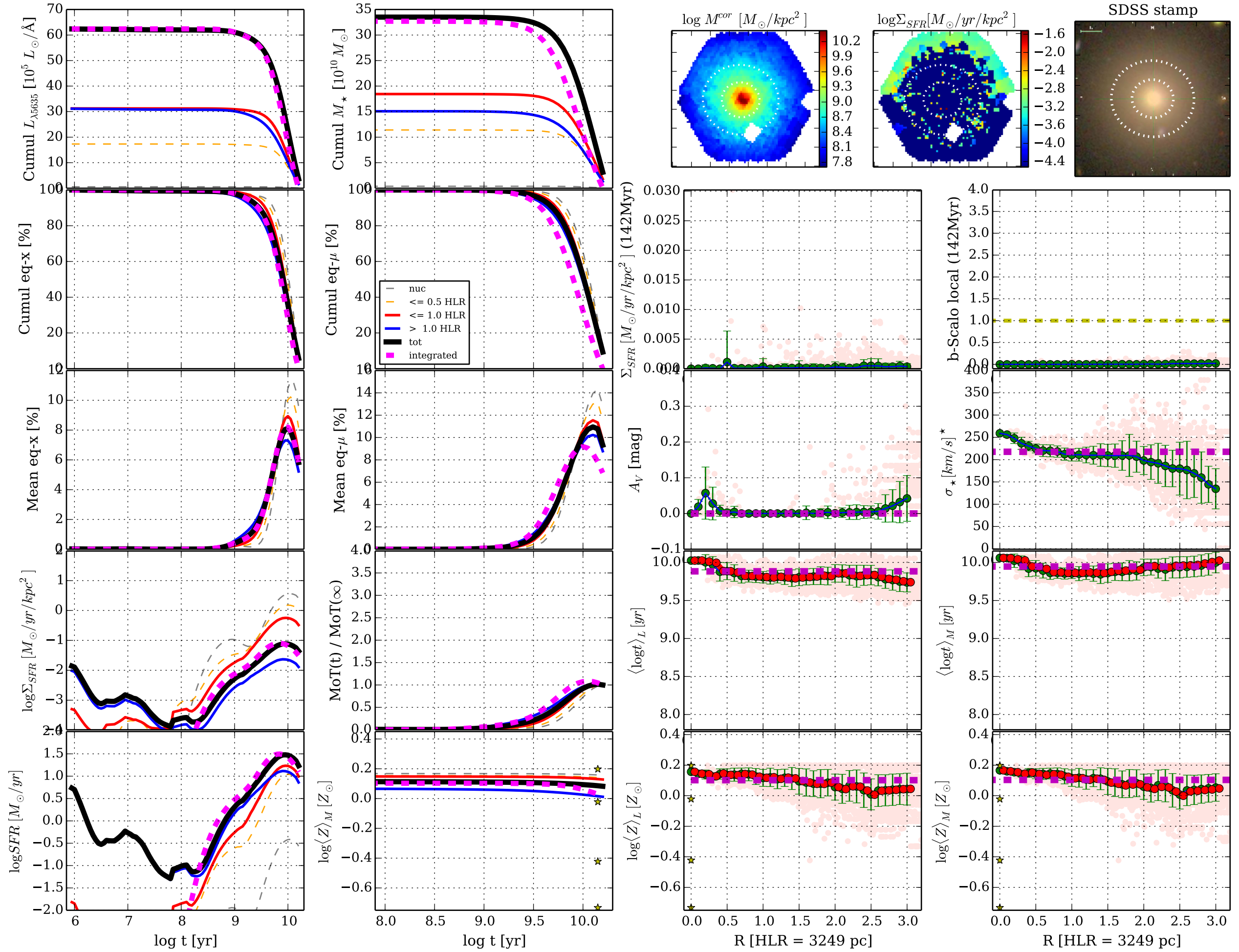


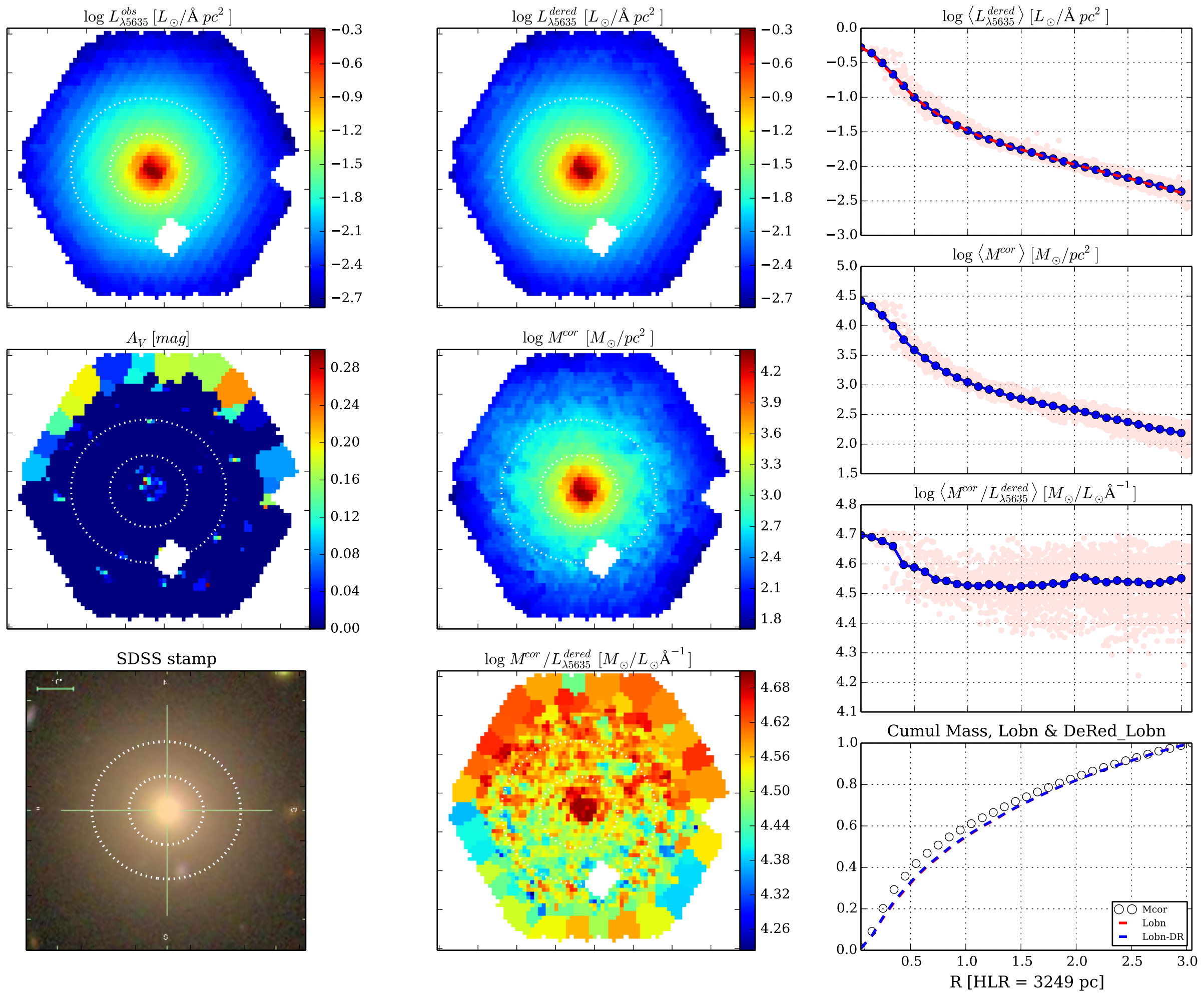
[Fig00] Data-&Fit Quality || K0829 0.4.5 d14a500 w/base Bgsd6e || FWHM= 0.50 dex ;  $\Delta R=1.0$  pix || NGC6125



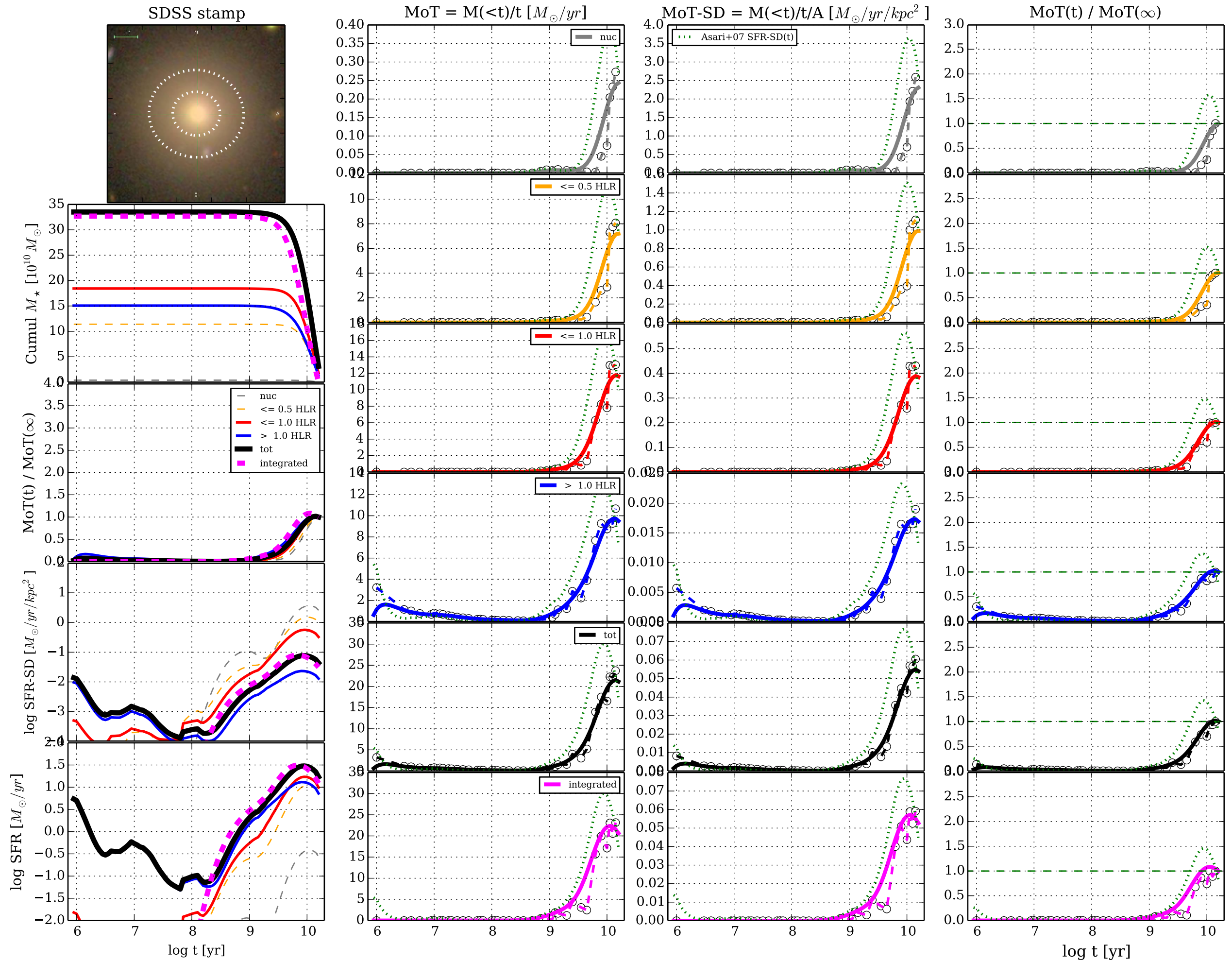
[Fig01] t & R profiles || K0829 0.4.5 d14a500 w/base Bgsd6e || FWHM= 0.50 dex ;  $\Delta R=1.0$  pix || NGC6125

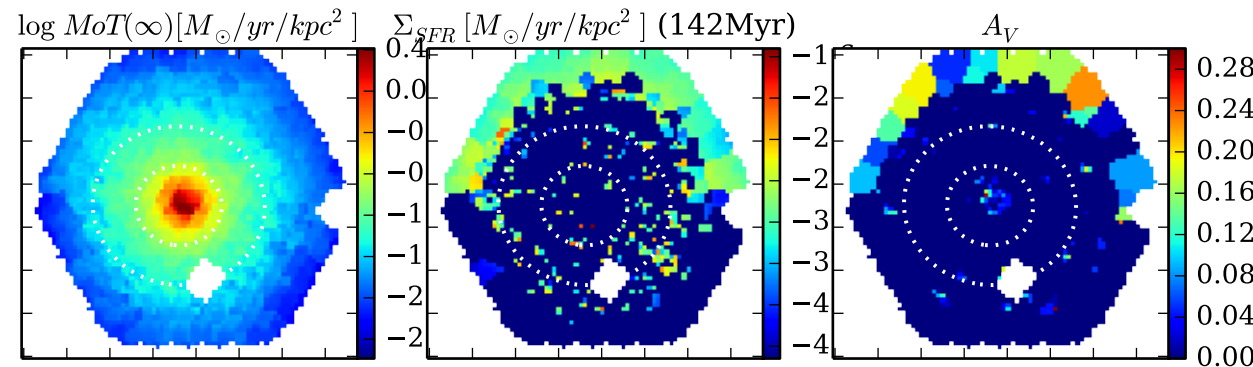
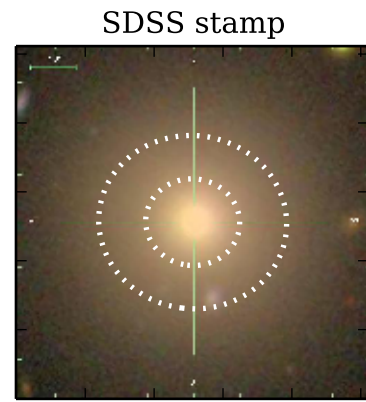


[Fig02] ... K0829 0.4.5 d14a500 w/base Bgsd6e || FWHM= 0.50 dex ;  $\Delta R=1.0$  pix || NGC6125



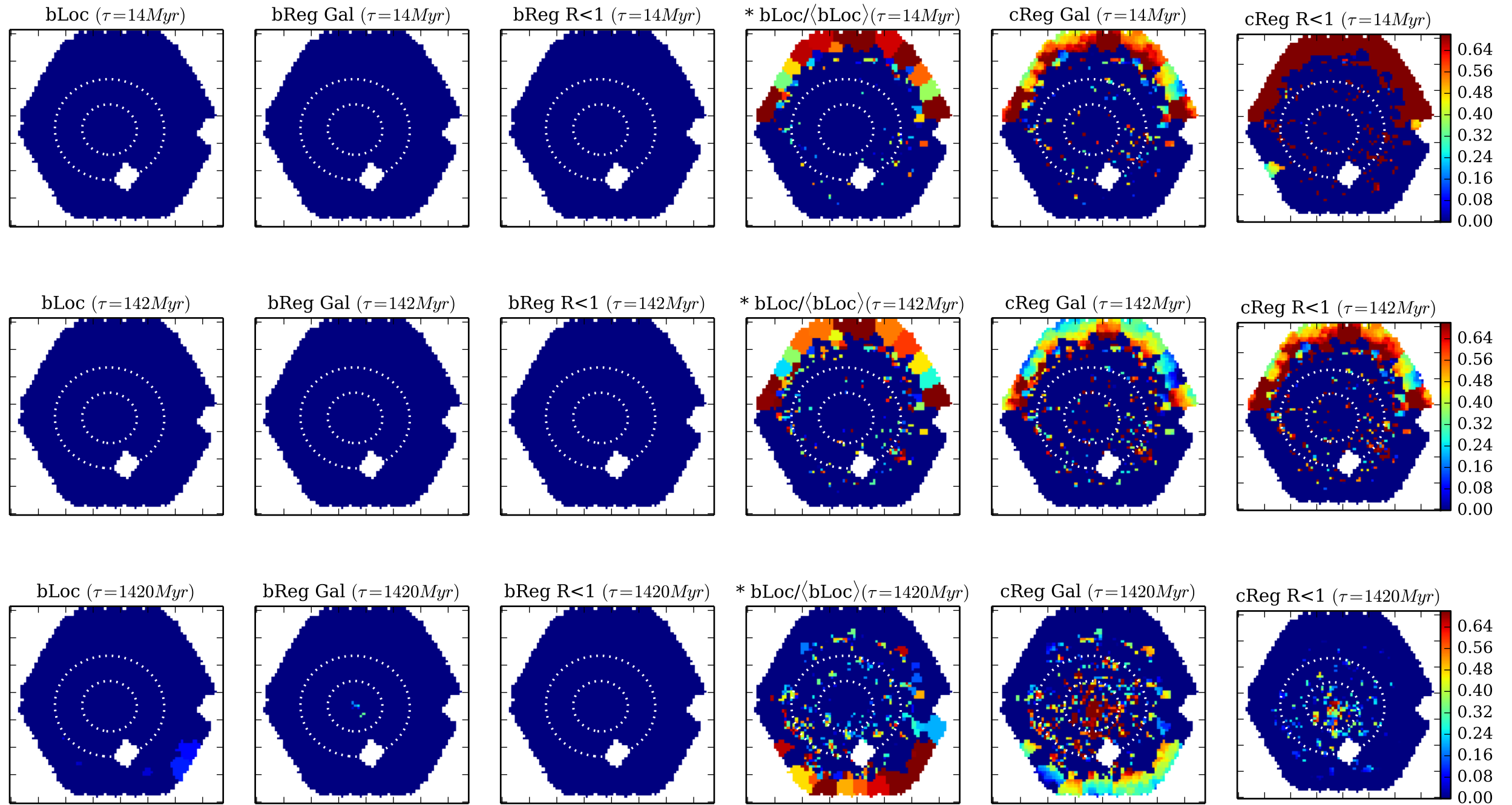




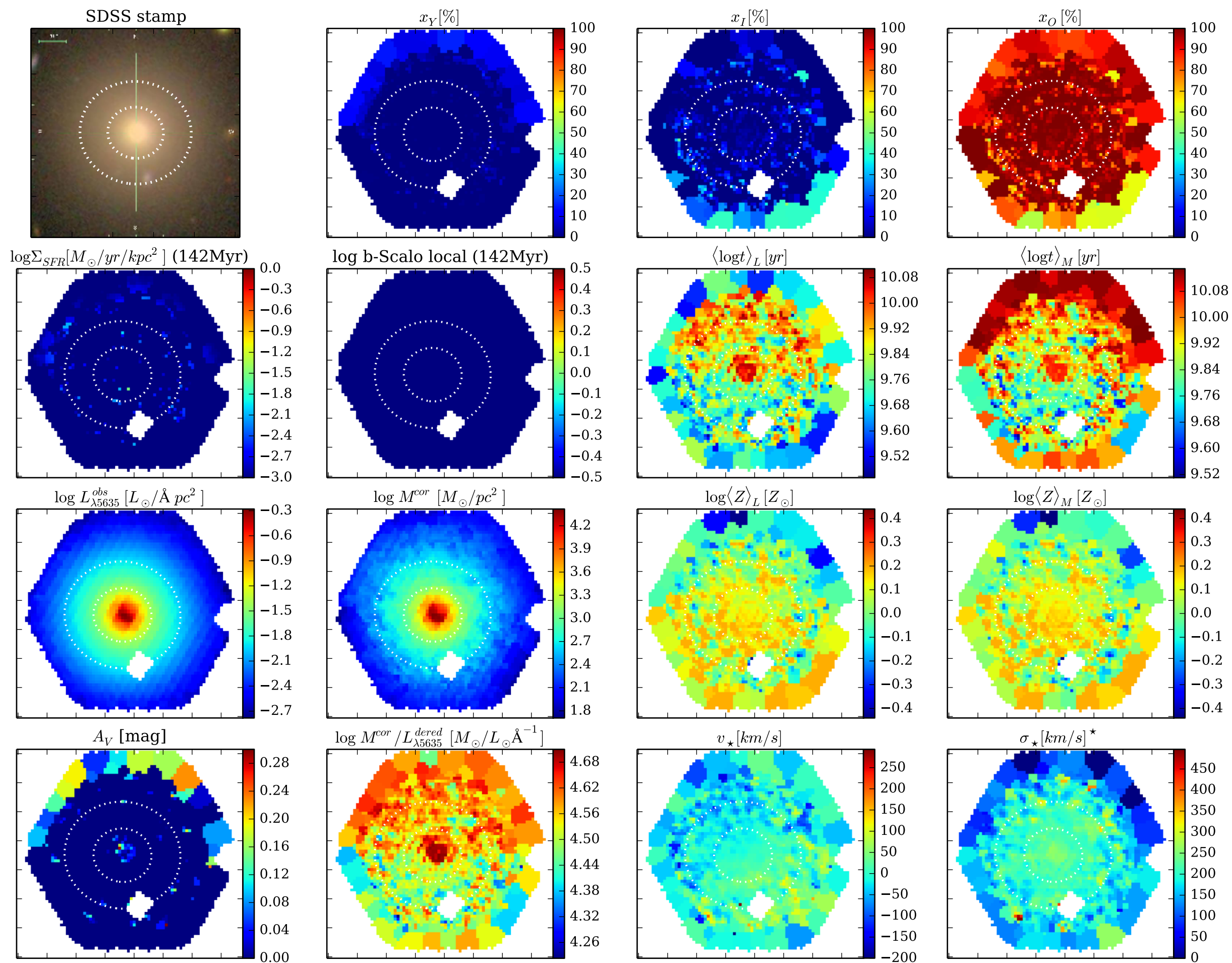


> b measures recent ( $t < \tau$ ) SFR SD wrt all-times SFR SD  
 bLoc is wrt to local SFH (ie, @ pixel yx)  
 bReg R<1 is wrt to inner 1 HLR region  
 bReg Gal is wrt to the whole galaxy

> c measures recent ( $t < \tau$ ) SFR SD wrt the same recent SFR SD  
 but at a **\*\*different place\*\***  
 cReg R<1 is wrt to inner 1 HLR region  
 cReg Gal is wrt to the whole galaxy



[Fig05] Properties maps || K0829 0.4.5 d14a500 w/base Bgsd6e || FWHM= 0.50 dex ;  $\Delta R=1.0$  pix || NGC6125





[Fig06] Z grad evol test || K0829 0.4.5 d14a500 w/base Bgsd6e || FWHM= 0.50 dex ;  $\Delta R=1.0$  pix || NGC6125

