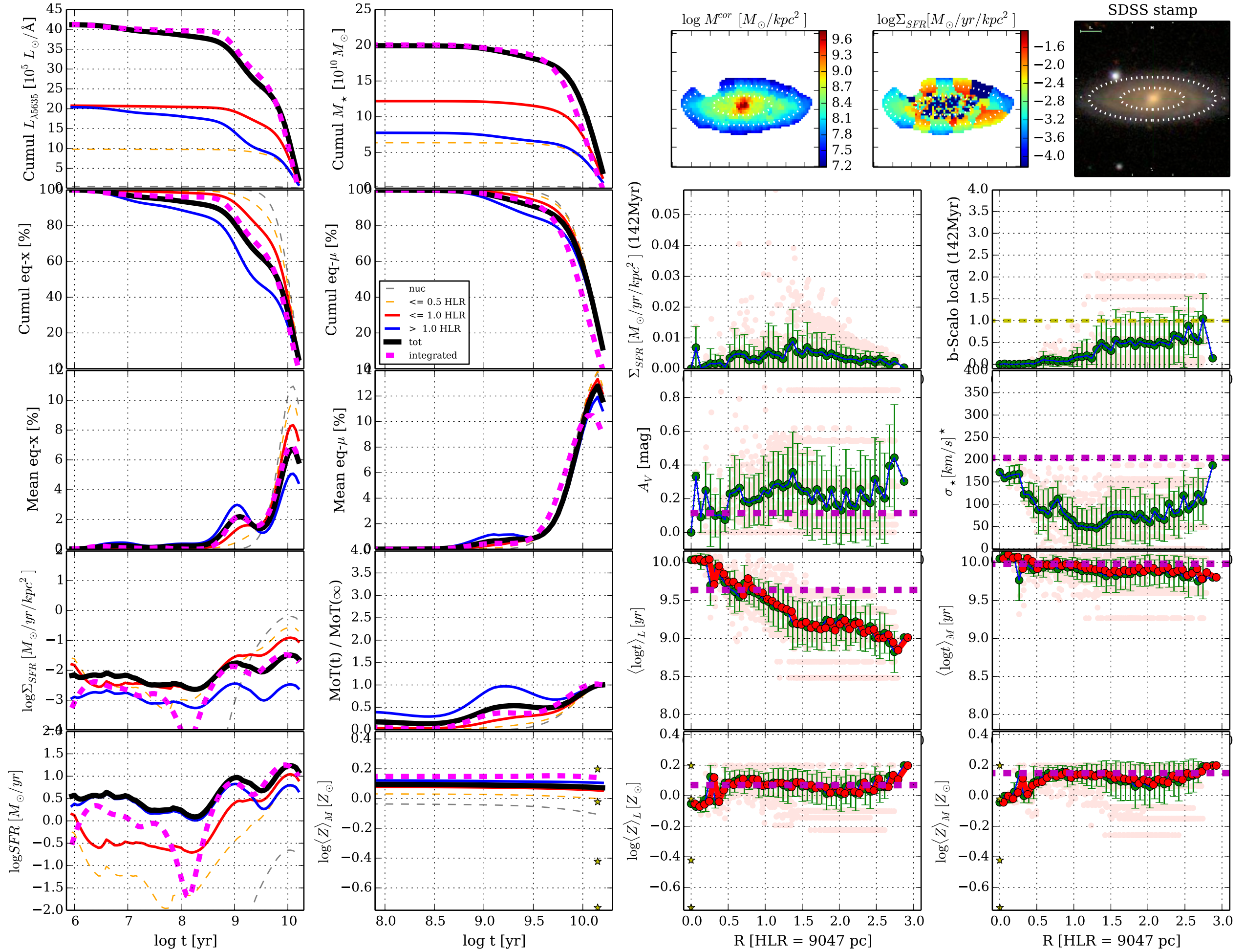
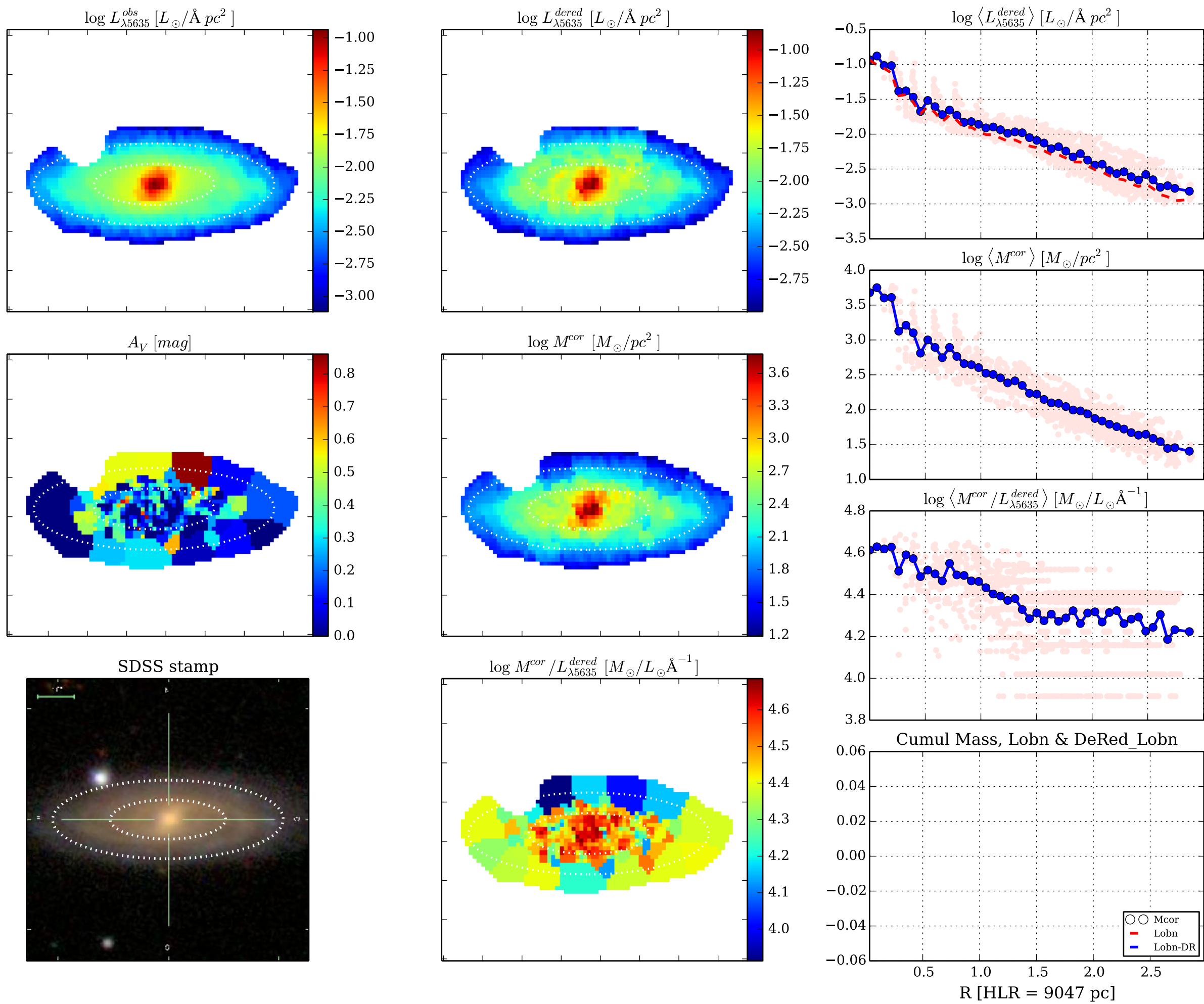
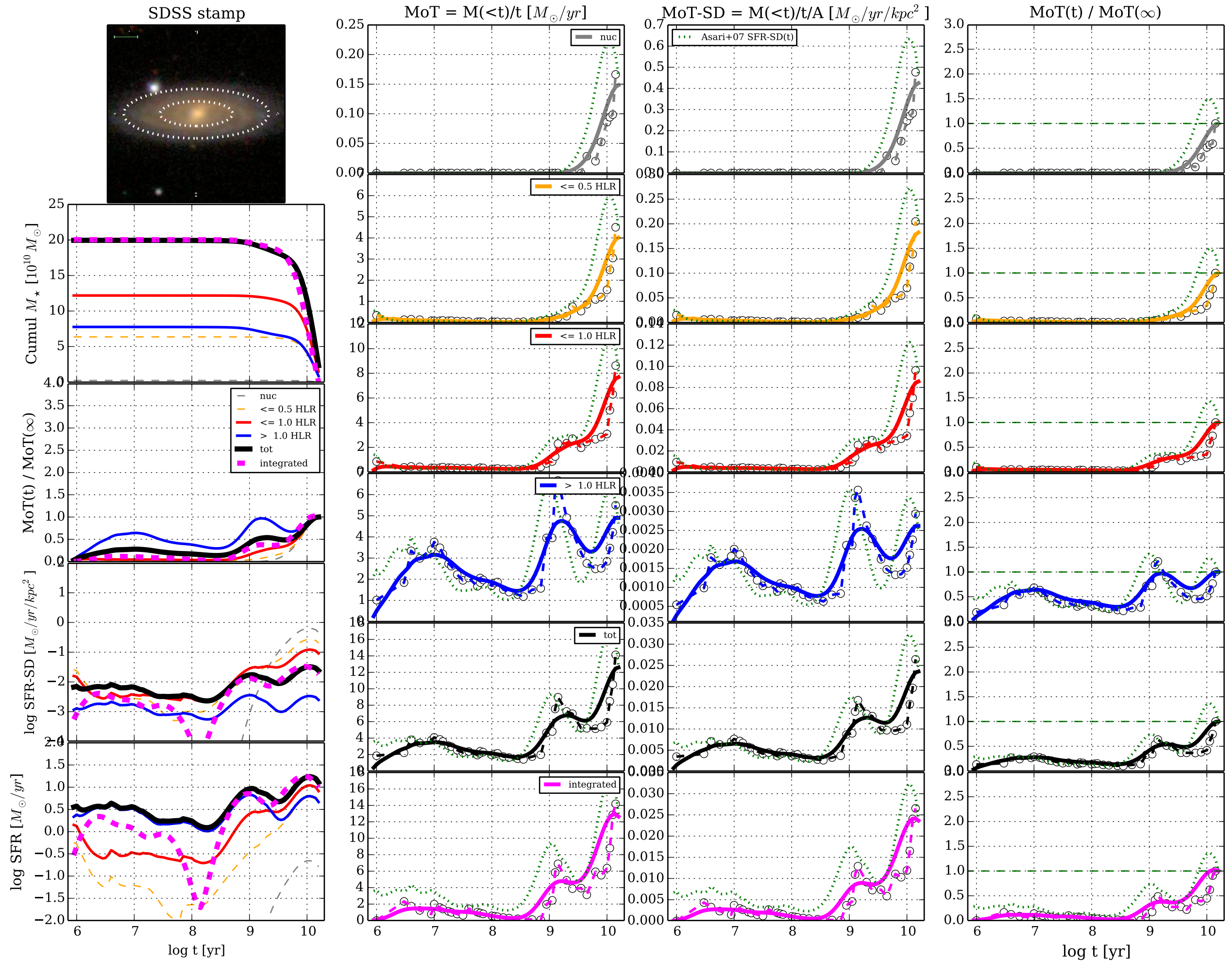


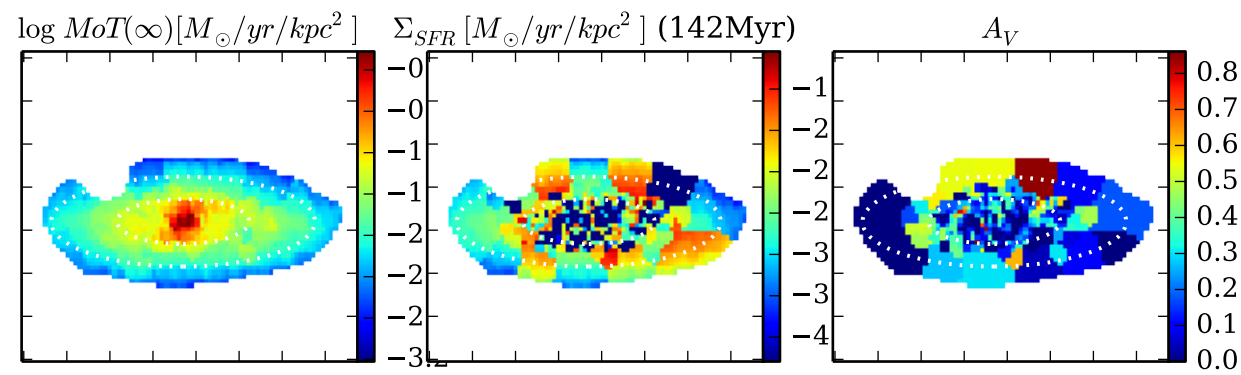
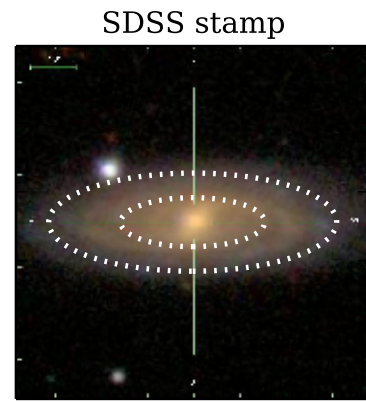
[Fig01] t & R profiles || K0854 0.4.5 d14a500 w/base Bgsd6e || FWHM= 0.50 dex ; $\Delta R=1.0$ pix || UGC10811



[Fig02] ... K0854 0.4.5 d14a500 w/base Bgsd6e || FWHM= 0.50 dex ; $\Delta R=1.0$ pix || UGC10811

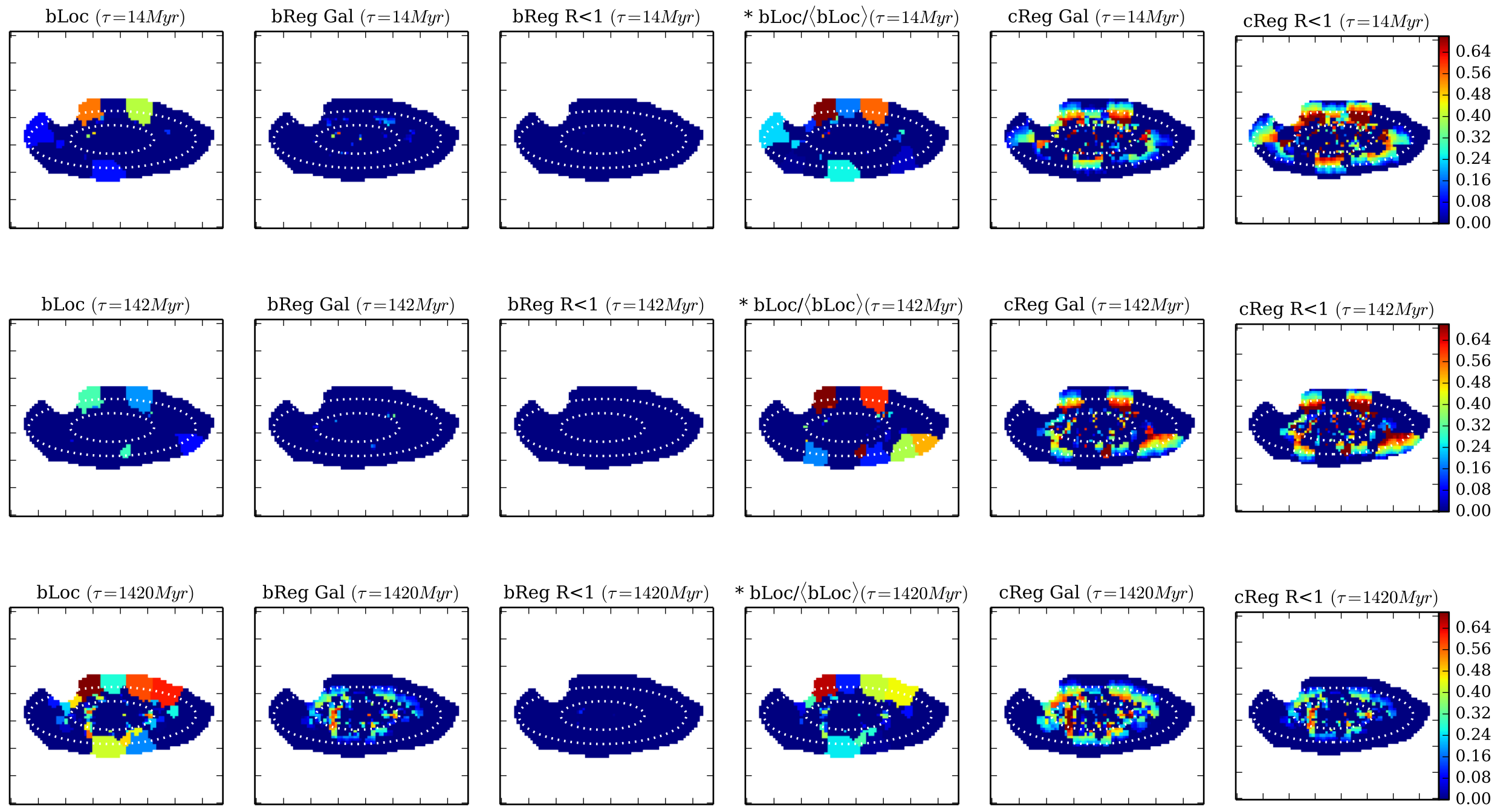




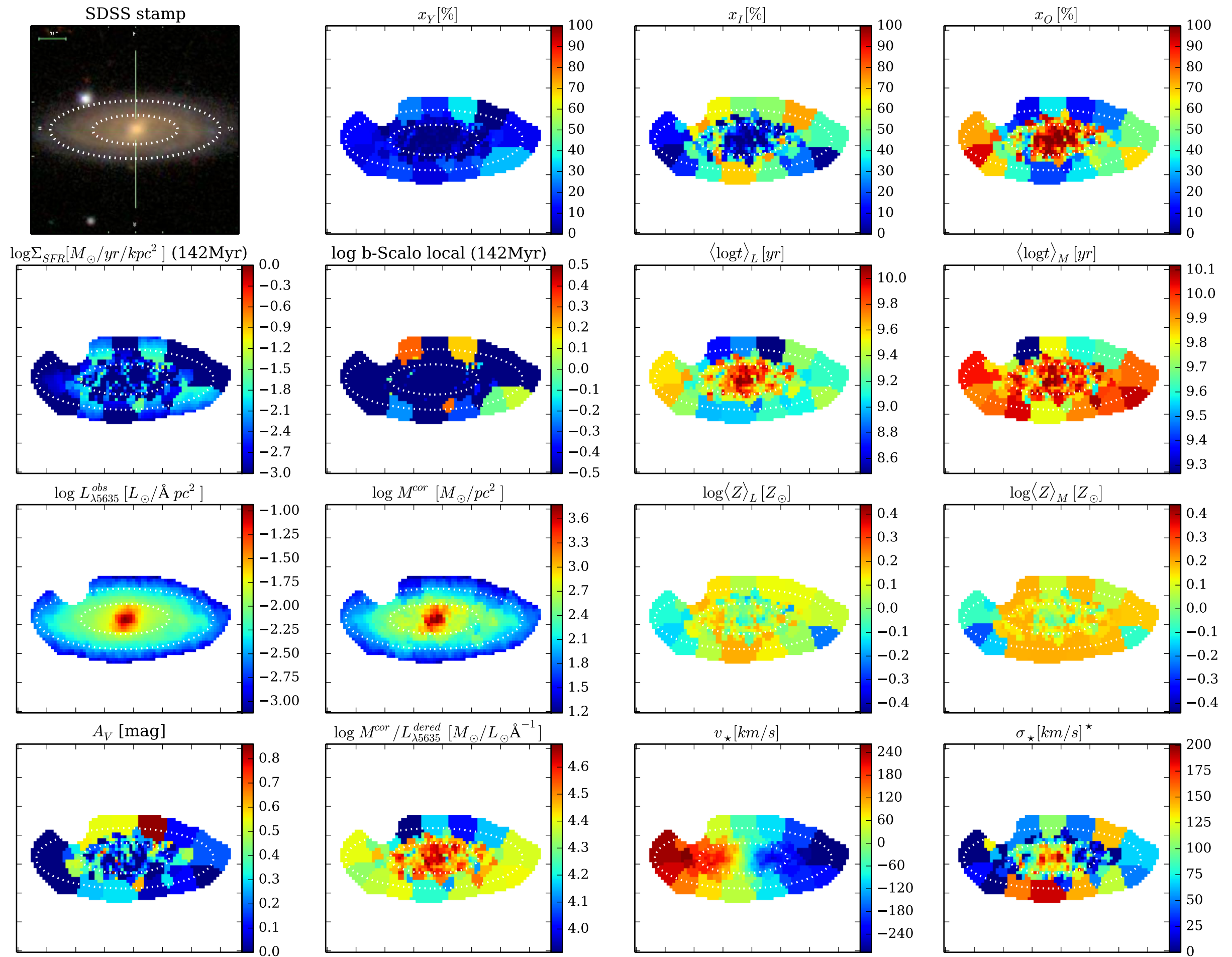


> b measures recent ($t < \tau$) SFR SD wrt all-times SFR SD
 bLoc is wrt to local SFH (ie, @ pixel yx)
 bReg R<1 is wrt to inner 1 HLR region
 bReg Gal is wrt to the whole galaxy

> c measures recent ($t < \tau$) SFR SD wrt the same recent SFR S
 but at a ****different place****
 cReg R<1 is wrt to inner 1 HLR region
 cReg Gal is wrt to the whole galaxy



[Fig05] Properties maps || K0854 0.4.5 d14a500 w/base Bgsd6e || FWHM= 0.50 dex ; $\Delta R=1.0$ pix || UGC10811



[Fig06] Z grad evol test || K0854 0.4.5 d14a500 w/base Bgsd6e || FWHM= 0.50 dex ; $\Delta R=1.0$ pix || UGC10811

