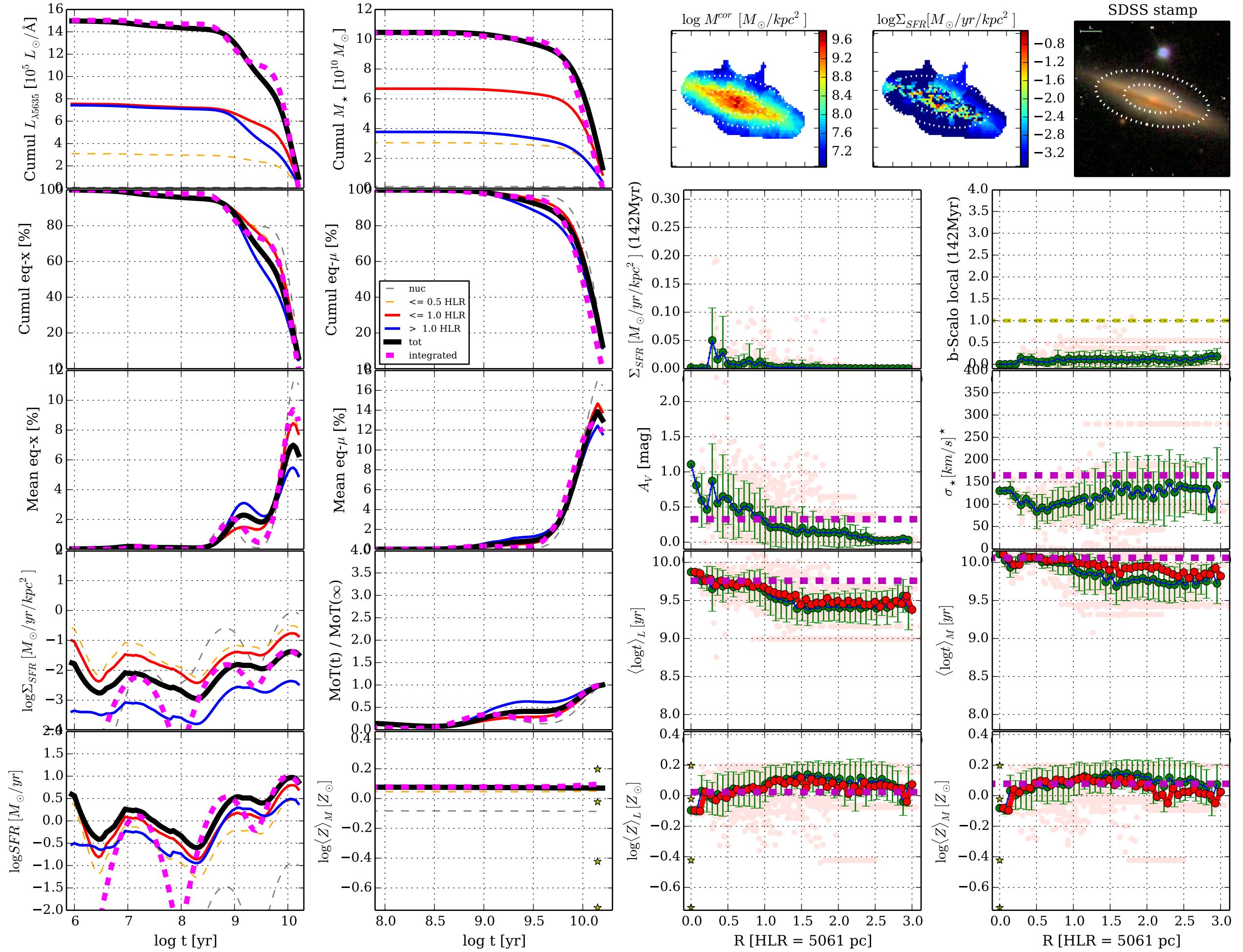
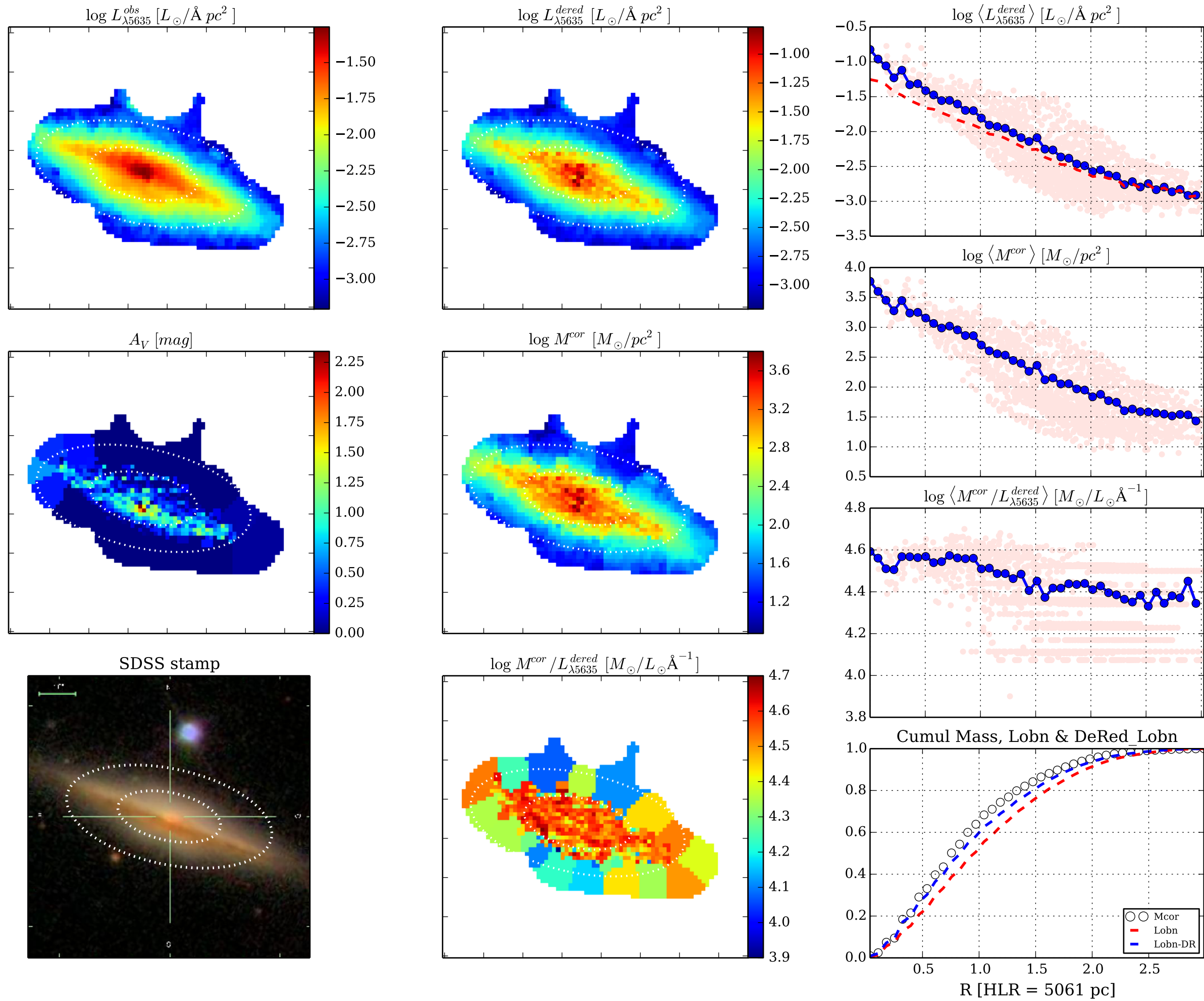
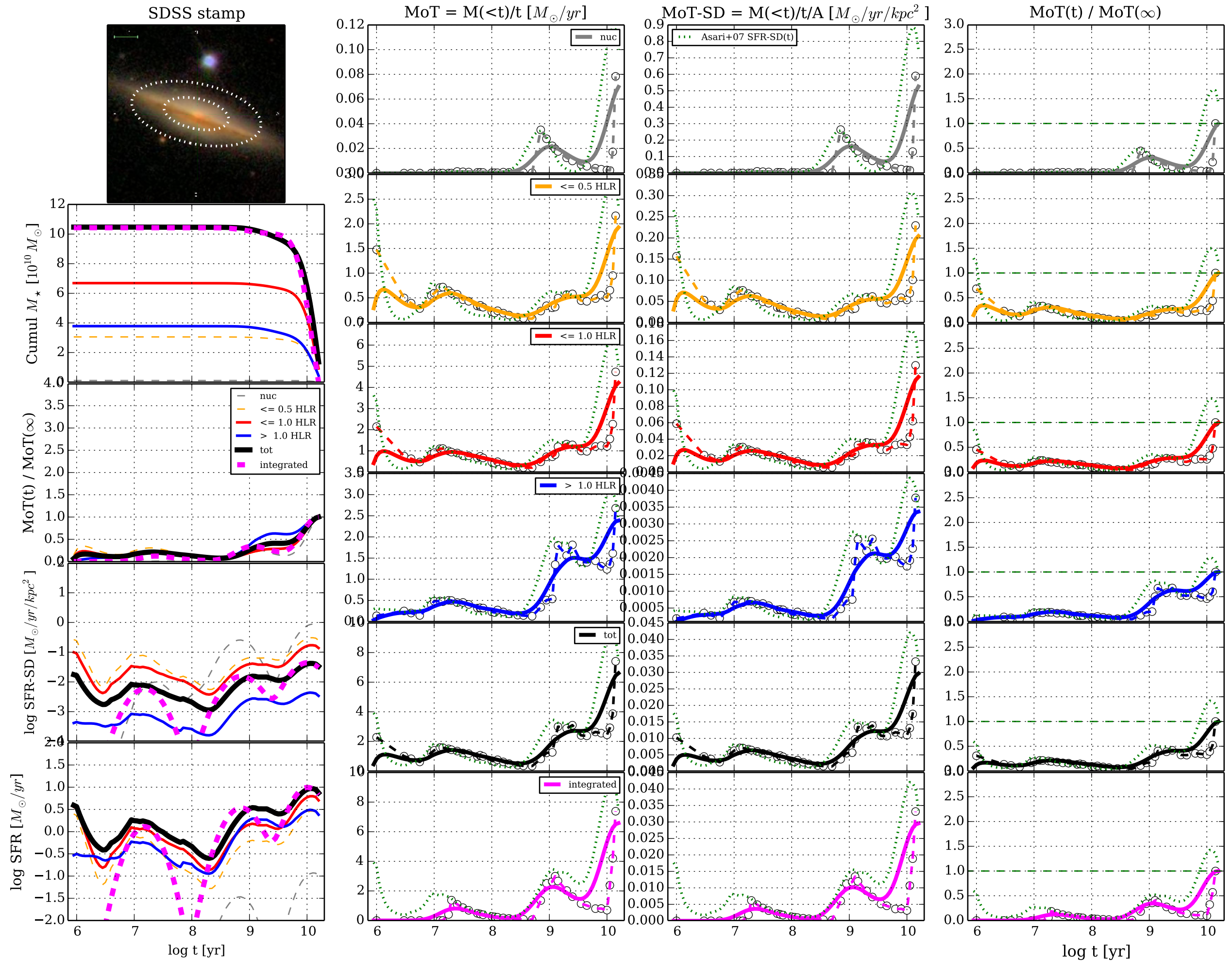


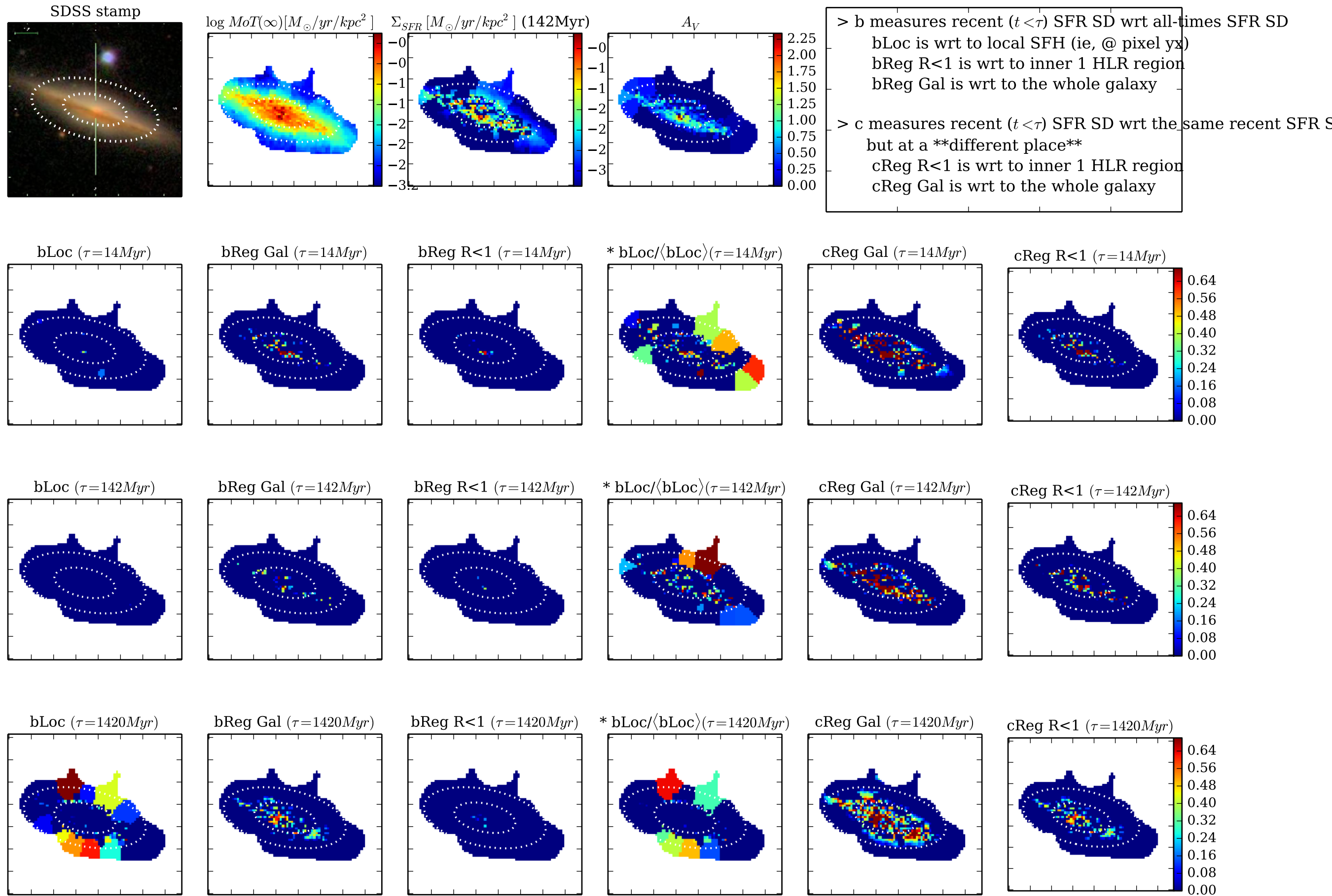
[Fig01] t & R profiles || K0936 0.4.5 d14a500 w/base Bgsd6e || FWHM= 0.50 dex ; $\Delta R=1.0$ pix || MCG-01-01-012



[Fig02] ... K0936 0.4.5 d14a500 w/base Bgsd6e || FWHM= 0.50 dex ; $\Delta R=1.0$ pix || MCG-01-01-012







[Fig05] Properties maps || K0936 0.4.5 d14a500 w/base Bgsd6e || FWHM= 0.50 dex ; $\Delta R=1.0$ pix || MCG-01-01-012

