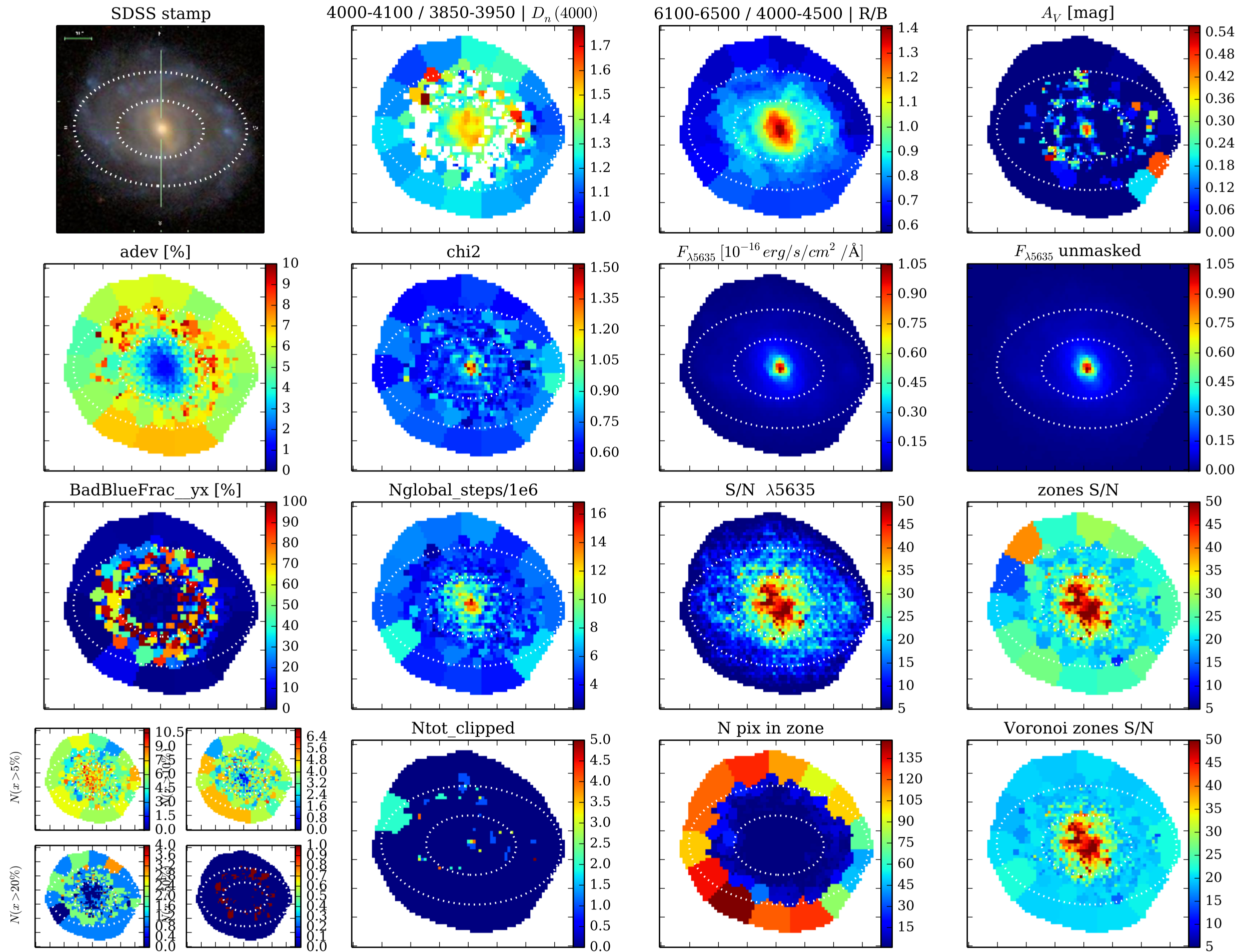
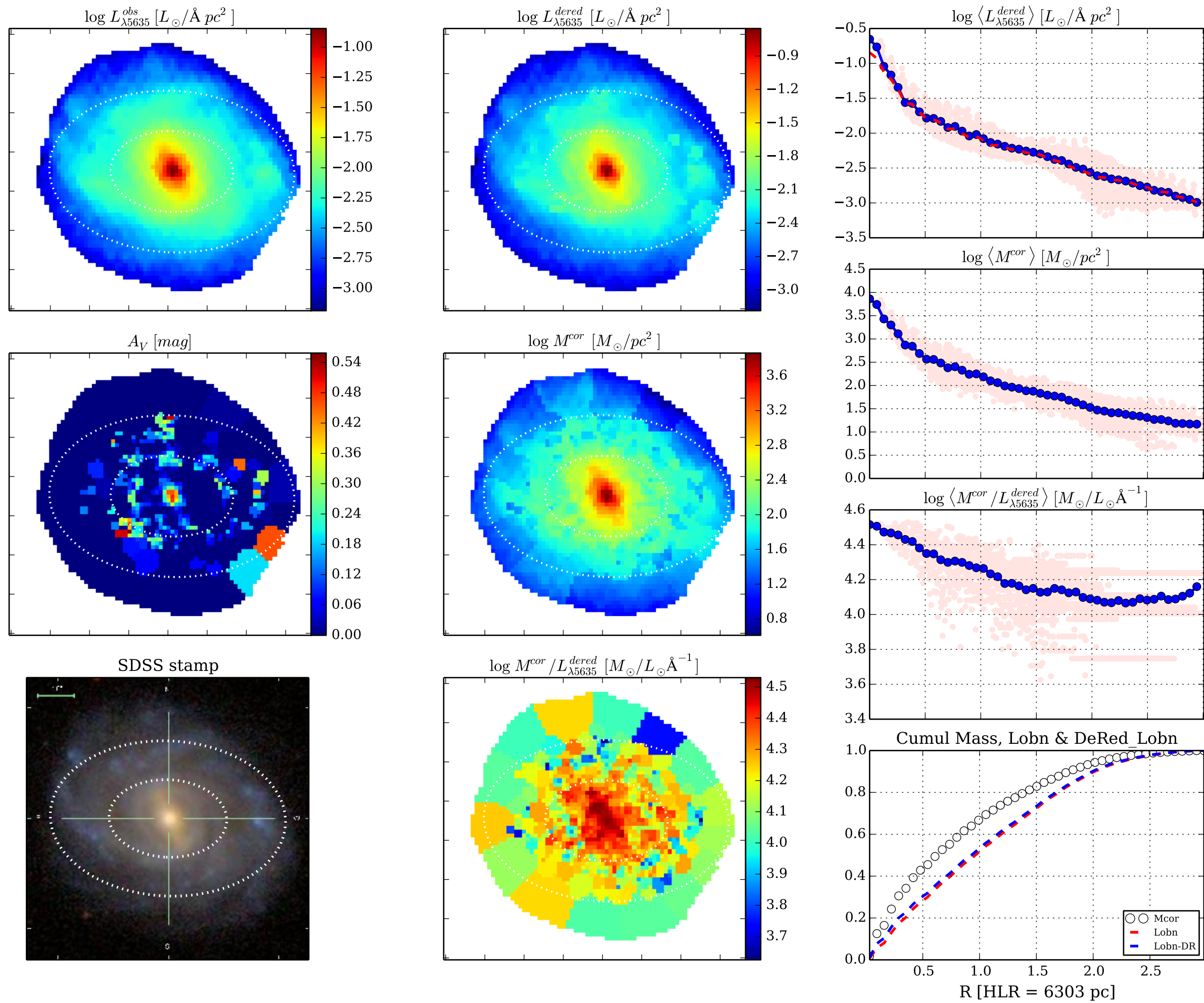


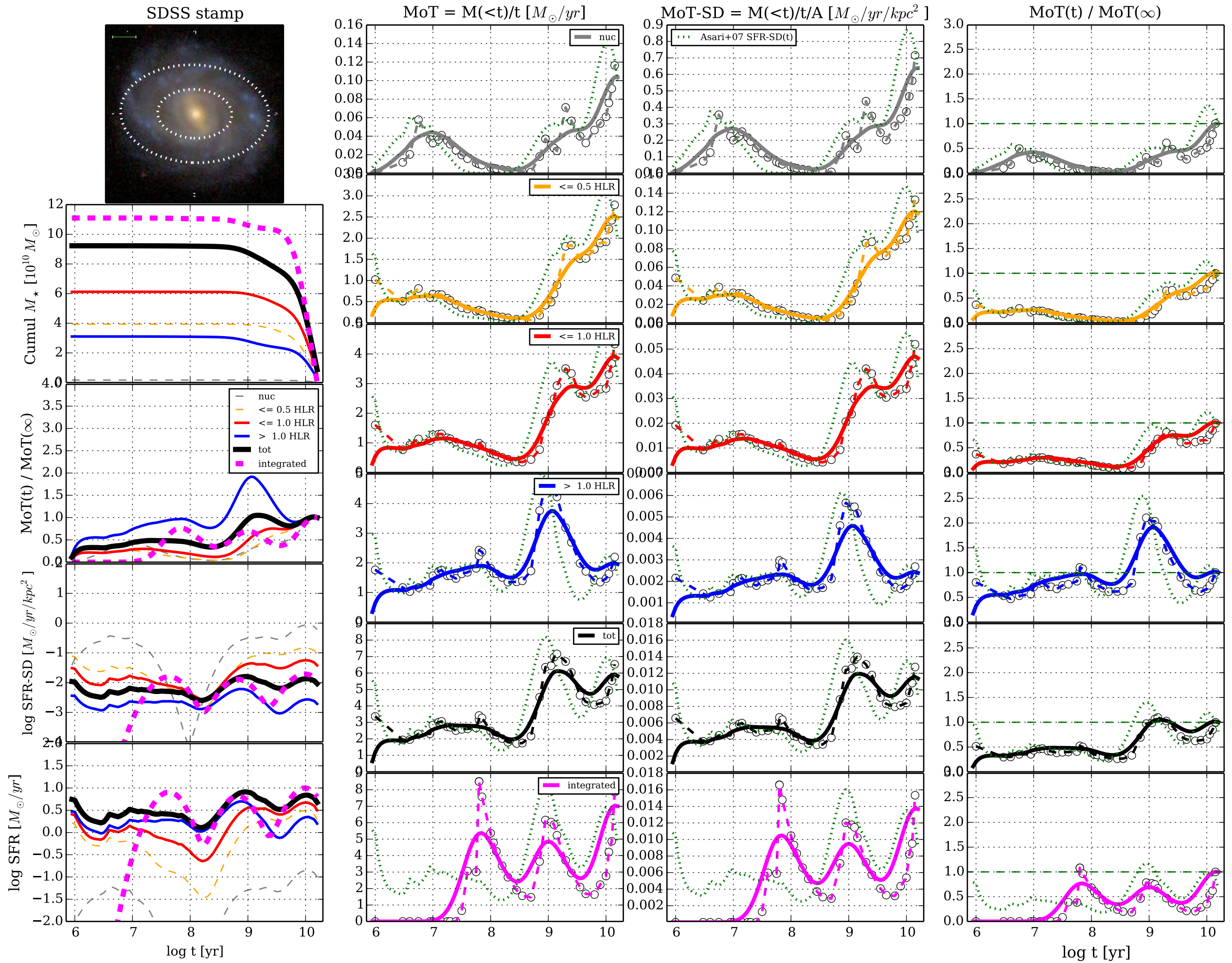
[Fig00] Data-&Fit Quality || K0938 0.4.5 d14a500 w/base Bgsd6e || FWHM= 0.50 dex ;  $\Delta R=1.0$  pix || NGC5947

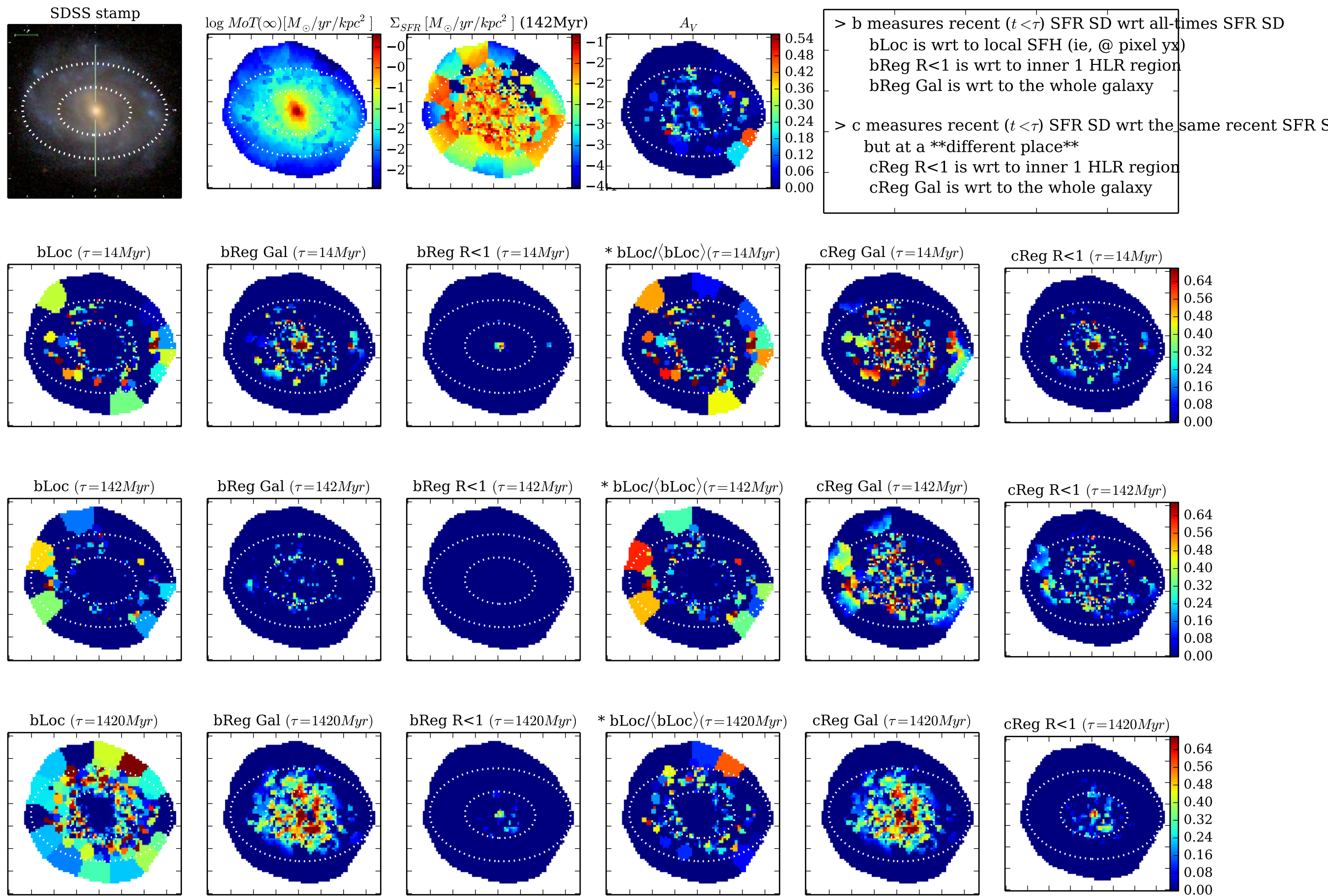




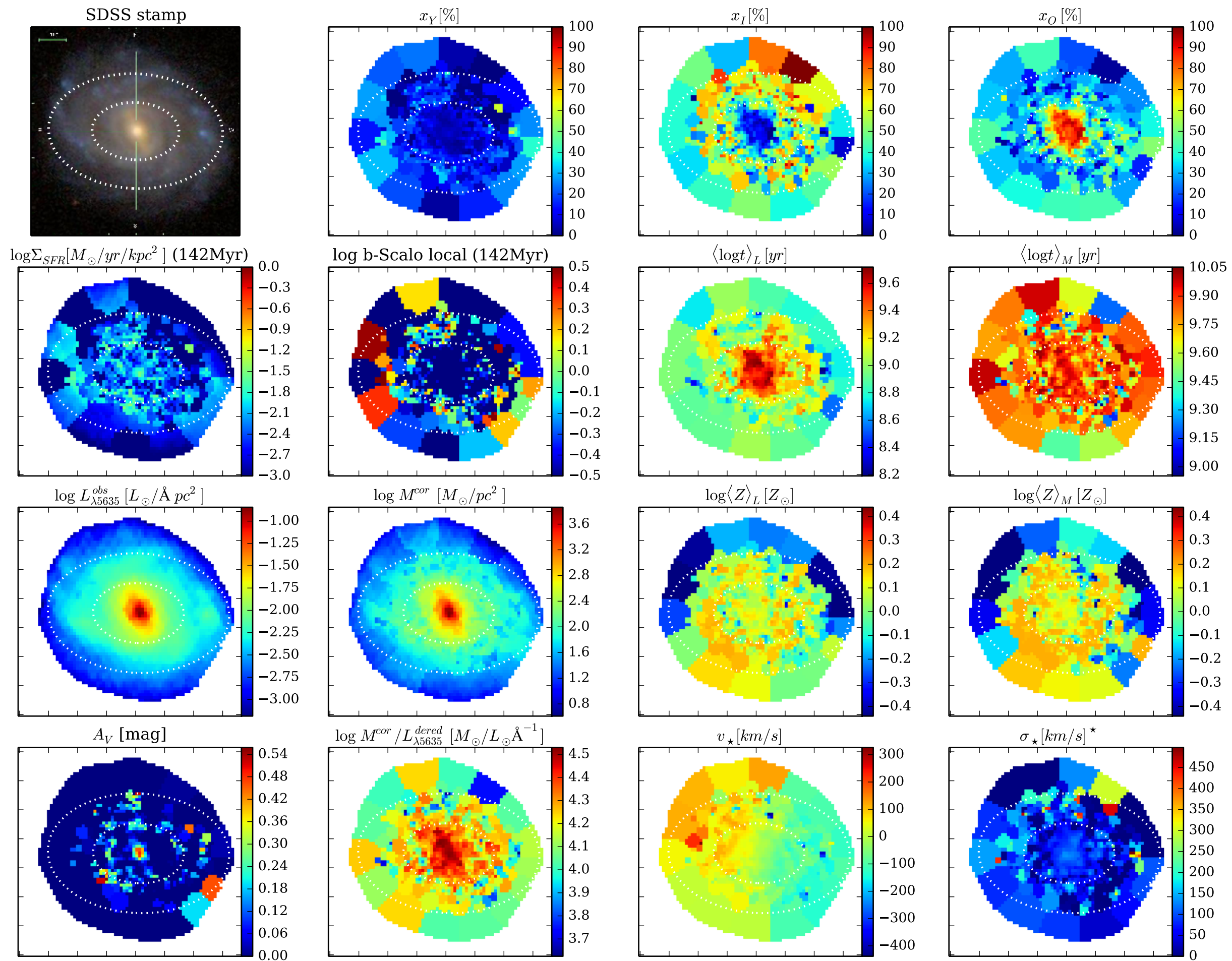
[Fig02] ... K0938 0.4.5 d14a500 w/base Bgsd6e|| FWHM= 0.50 dex ;  $\Delta R=1.0$  pix || NGC5947







[Fig05] Properties maps || K0938 0.4.5 d14a500 w/base Bgsd6e || FWHM= 0.50 dex ;  $\Delta R=1.0$  pix || NGC5947



[Fig06] Z grad evol test || K0938 0.4.5 d14a500 w/base Bgsd6e || FWHM= 0.50 dex ;  $\Delta R=1.0$  pix || NGC5947

