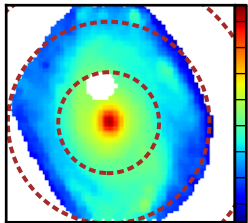
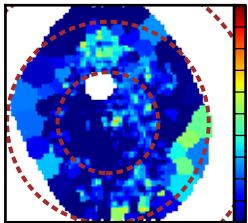


$\log \mathcal{L}_{\lambda 5635} [L_{\odot}/\text{\AA} pc^2]$



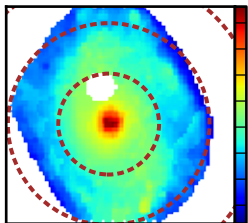
-0.75
-1.00
-1.25
-1.50
-1.75
-2.00
-2.25
-2.50

A_V [mag]



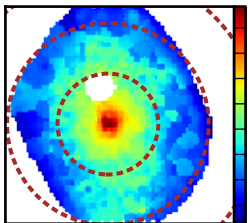
0.80
0.72
0.64
0.56
0.48
0.40
0.32
0.24
0.16
0.08
0.00

$\log \mathcal{L}_{\lambda 5635}^{dered} [L_{\odot}/\text{\AA} pc^2]$



-0.75
-1.00
-1.25
-1.50
-1.75
-2.00
-2.25
-2.50

$\log \mathcal{M}_{\star} [M_{\odot}/pc^2]$



3.6
3.3
3.0
2.7
2.4
2.1
1.8
1.5