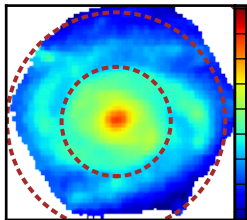
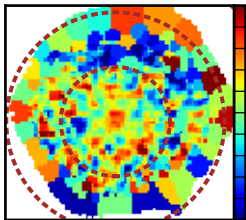


$\log \mathcal{L}_{\lambda 5635} [L_{\odot}/\text{\AA} pc^2]$



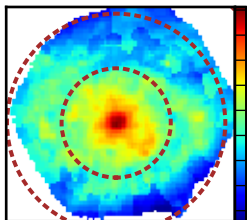
-1.0  
-1.2  
-1.4  
-1.6  
-1.8  
-2.0  
-2.2  
-2.4  
-2.6

$A_V$  [mag]



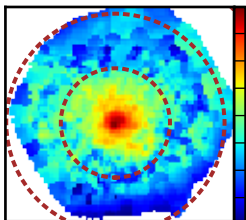
0.80  
0.72  
0.64  
0.56  
0.48  
0.40  
0.32  
0.24  
0.16  
0.08  
0.00

$\log \mathcal{L}_{\lambda 5635}^{dered} [L_{\odot}/\text{\AA} pc^2]$



-1.0  
-1.2  
-1.4  
-1.6  
-1.8  
-2.0  
-2.2  
-2.4  
-2.6

$\log \mathcal{M}_{\star} [M_{\odot}/pc^2]$



3.25  
3.00  
2.75  
2.50  
2.25  
2.00  
1.75