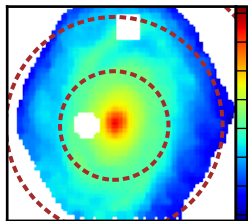
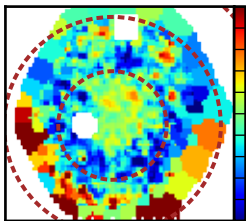


$\log \mathcal{L}_{\lambda 5635} [L_{\odot}/\text{\AA} \text{ pc}^2]$



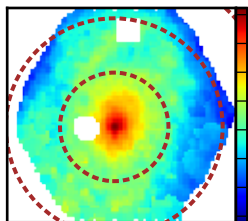
-1.00  
-1.25  
-1.50  
-1.75  
-2.00  
-2.25  
-2.50  
-2.75

$A_V$  [mag]



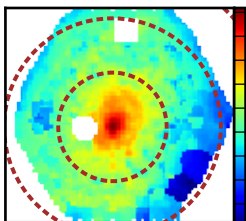
0.80  
0.72  
0.64  
0.56  
0.48  
0.40  
0.32  
0.24  
0.16  
0.08  
0.00

$\log \mathcal{L}_{\lambda 5635}^{\text{dered}} [L_{\odot}/\text{\AA} \text{ pc}^2]$



-1.00  
-1.25  
-1.50  
-1.75  
-2.00  
-2.25  
-2.50  
-2.75

$\log \mathcal{M}_{\star} [M_{\odot}/\text{pc}^2]$



3.50  
3.25  
3.00  
2.75  
2.50  
2.25  
2.00  
1.75  
1.50