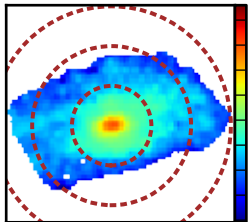
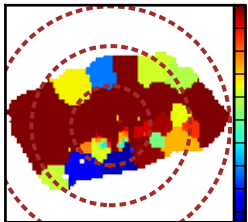


$\log \mathcal{L}_{\lambda 5635} [L_{\odot}/\text{\AA} \text{ pc}^2]$



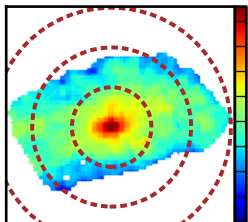
-0.50  
-0.75  
-1.00  
-1.25  
-1.50  
-1.75  
-2.00  
-2.25  
-2.50

$A_V$  [mag]



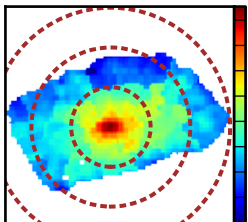
0.80  
0.76  
0.72  
0.68  
0.64  
0.60  
0.56  
0.52  
0.48  
0.44

$\log \mathcal{L}_{\lambda 5635}^{dered} [L_{\odot}/\text{\AA} \text{ pc}^2]$



-0.50  
-0.75  
-1.00  
-1.25  
-1.50  
-1.75  
-2.00  
-2.25  
-2.50

$\log \mathcal{M}_{\star} [M_{\odot}/\text{pc}^2]$



3.9  
3.6  
3.3  
3.0  
2.7  
2.4  
2.1  
1.8  
1.5