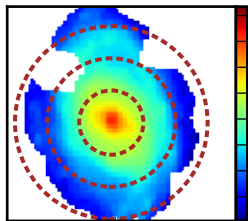
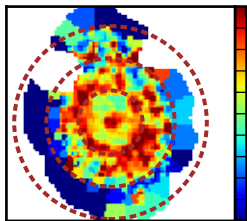


$\log \mathcal{L}_{\lambda 5635} [L_{\odot}/\text{\AA} \text{ pc}^2]$



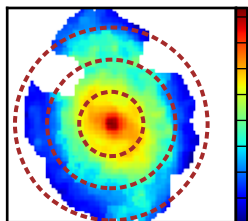
-0.6
-0.9
-1.2
-1.5
-1.8
-2.1
-2.4
-2.7

A_V [mag]



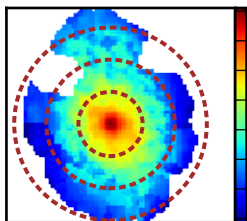
0.80
0.72
0.64
0.56
0.48
0.40
0.32
0.24
0.16
0.08
0.00

$\log \mathcal{L}_{\lambda 5635}^{\text{dered}} [L_{\odot}/\text{\AA} \text{ pc}^2]$



-0.6
-0.9
-1.2
-1.5
-1.8
-2.1
-2.4
-2.7

$\log \mathcal{M}_{\star} [M_{\odot}/\text{pc}^2]$



4.0
3.6
3.2
2.8
2.4
2.0
1.6
1.2