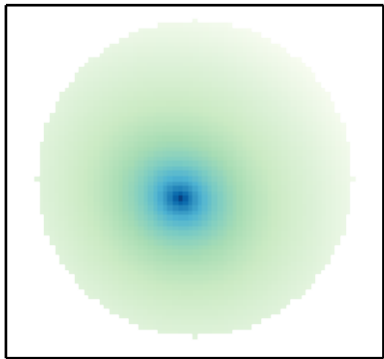
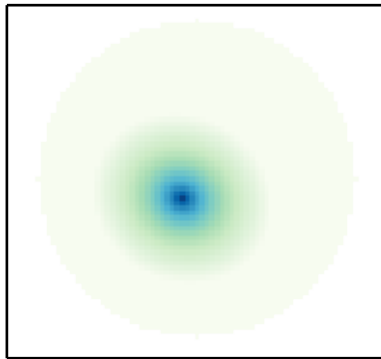


Original model: $I_e = 2.000$, $r_e = 5.000$, $n = 2.000$, $I_0 = 1.000$, $h = 15.000$, $FWHM = 2.40$

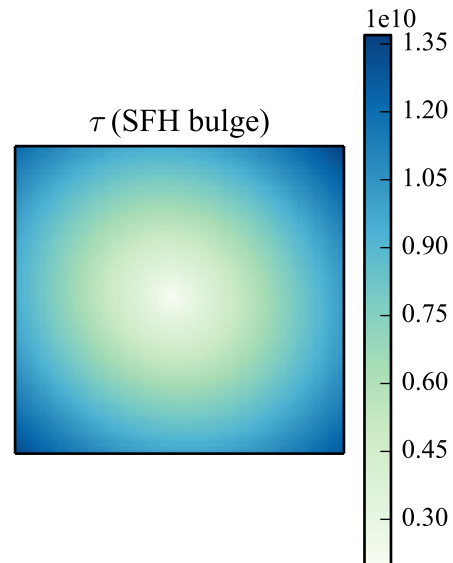
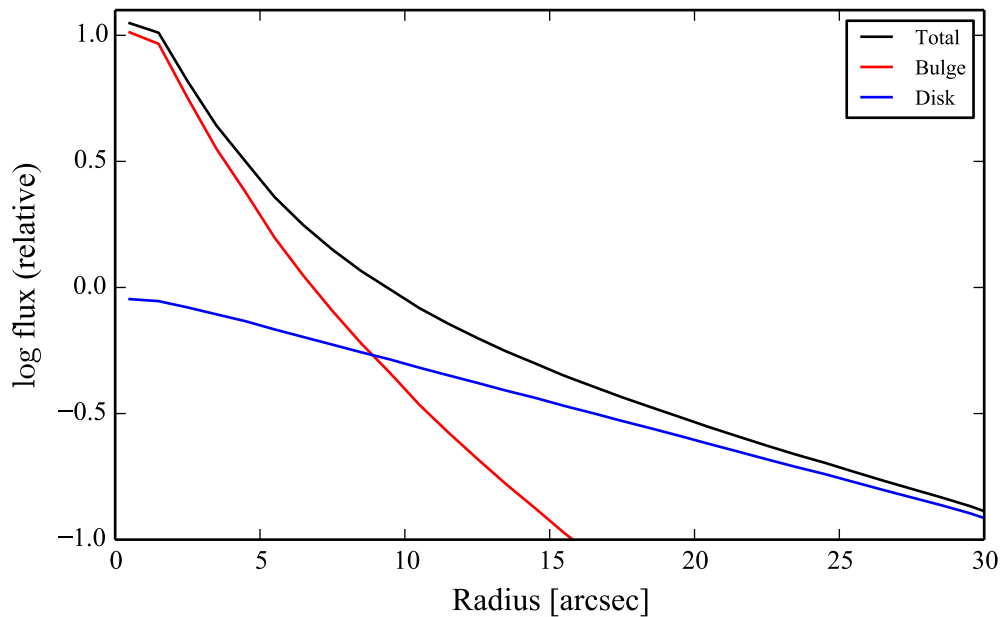
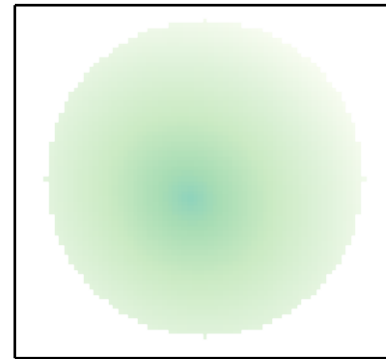
Total



Bulge

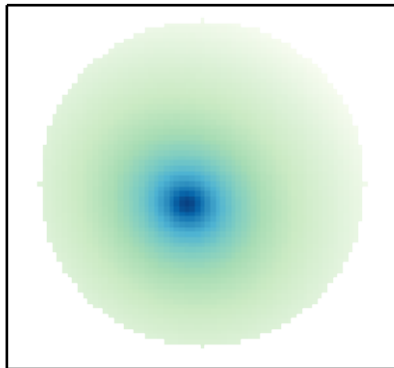


Disk

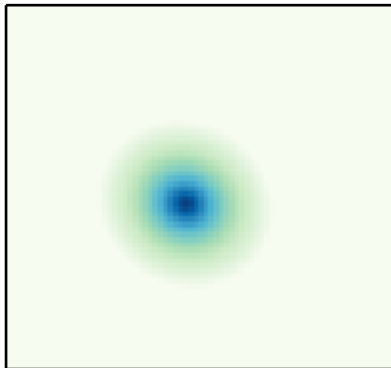


Initial model: $I_e = 2.131$, $r_e = 4.834$, $n = 1.812$, $I_0 = 1.054$, $h = 14.774$, $FWHM = 2.00$

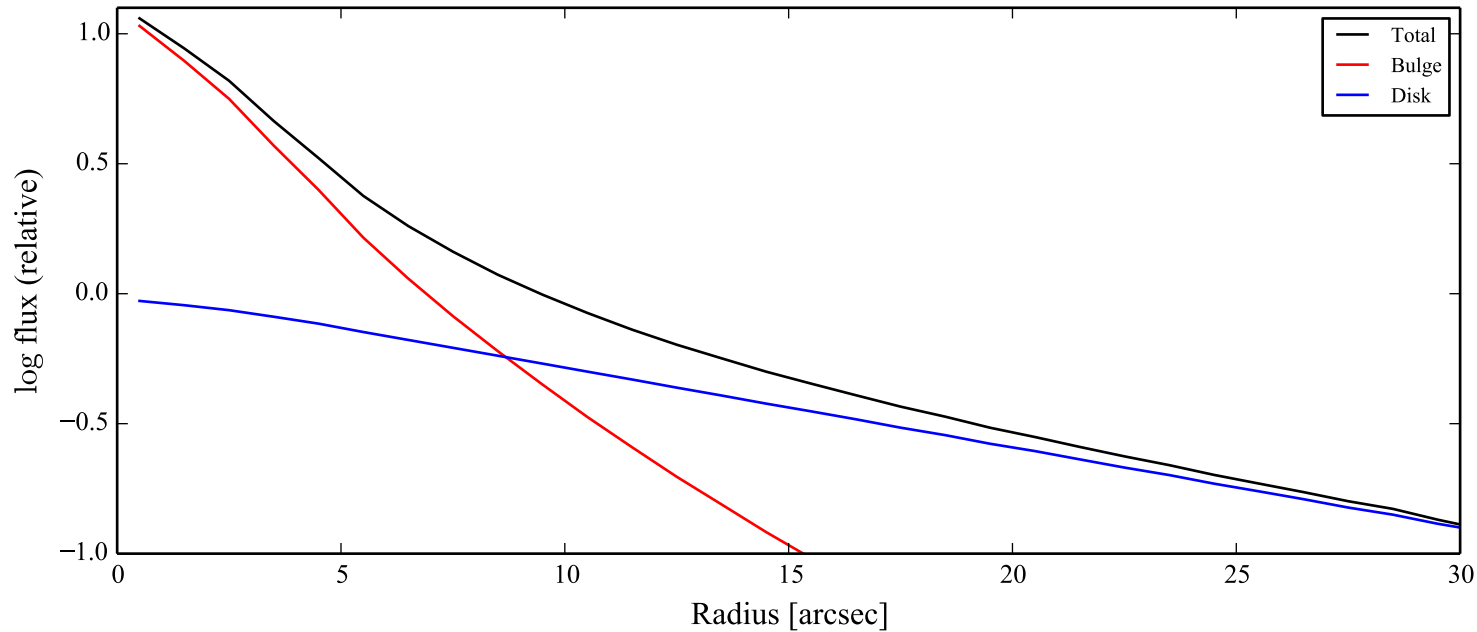
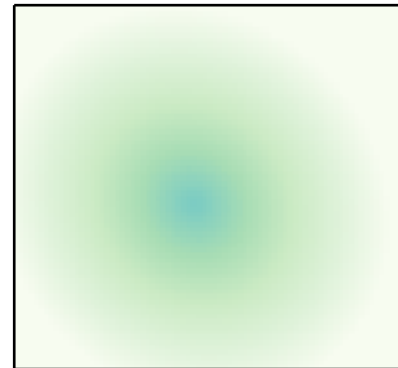
Total

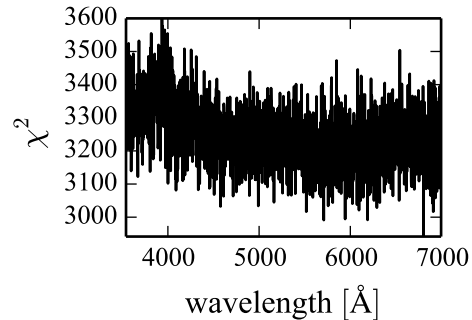
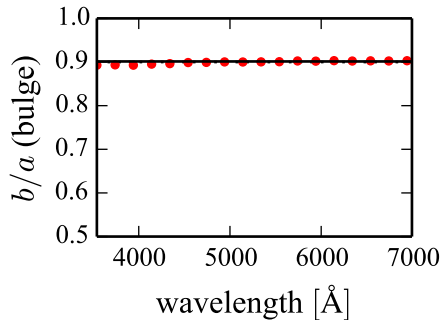
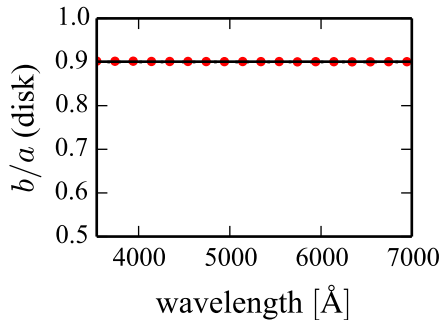
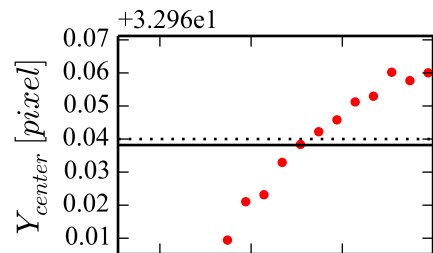
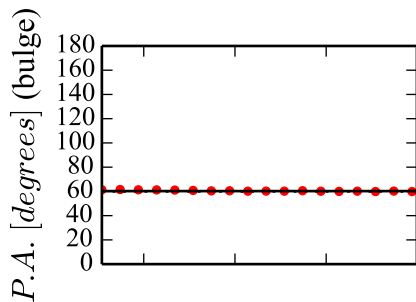
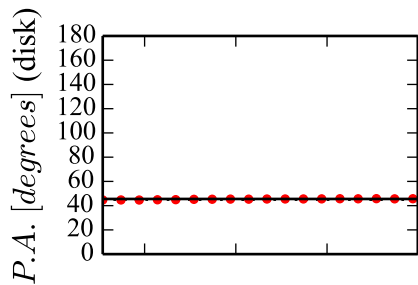
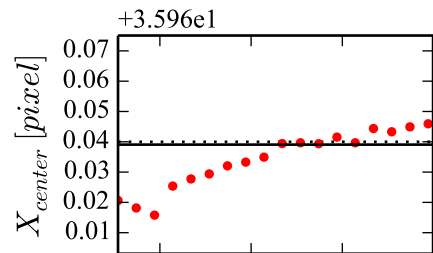
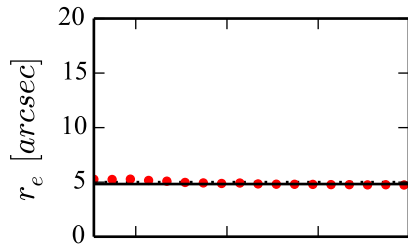
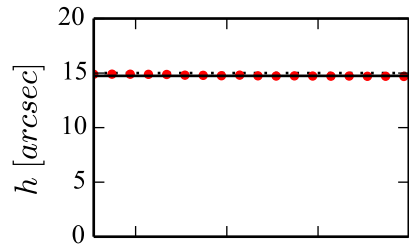
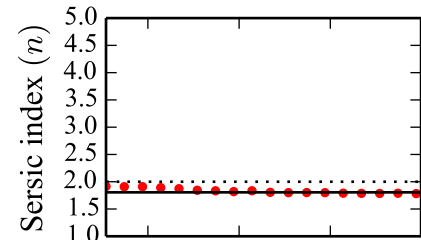
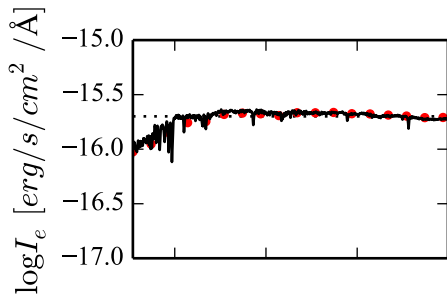
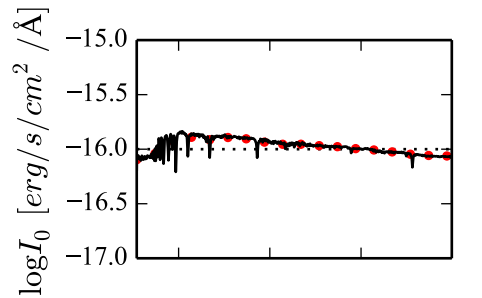


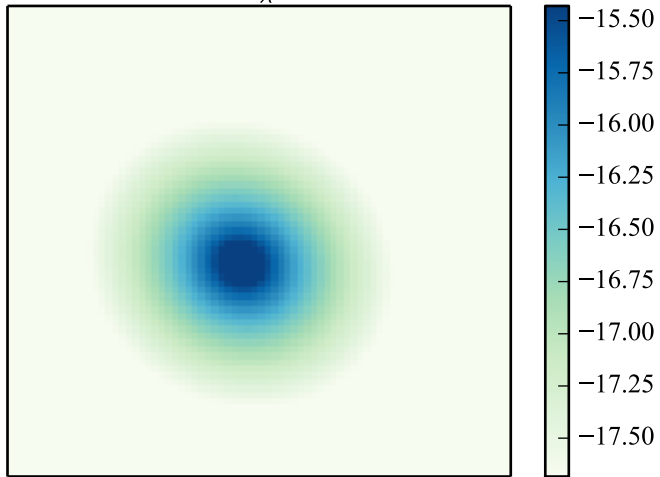
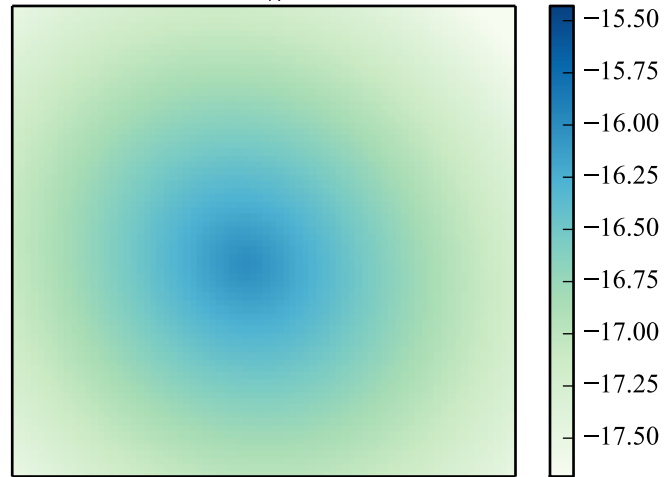
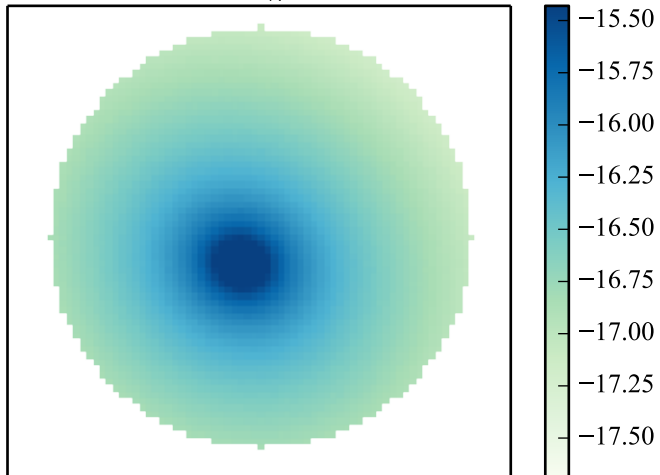
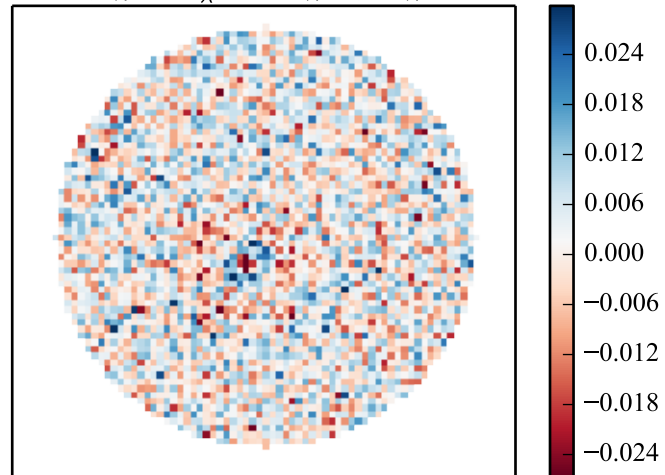
Bulge

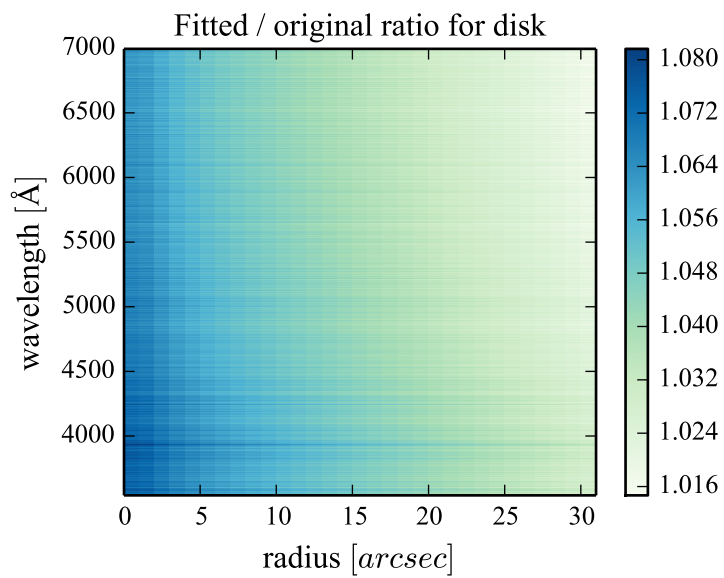
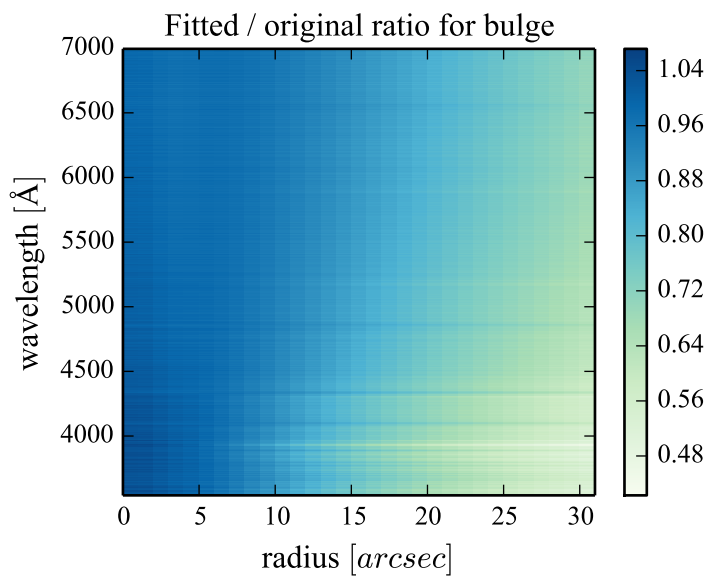
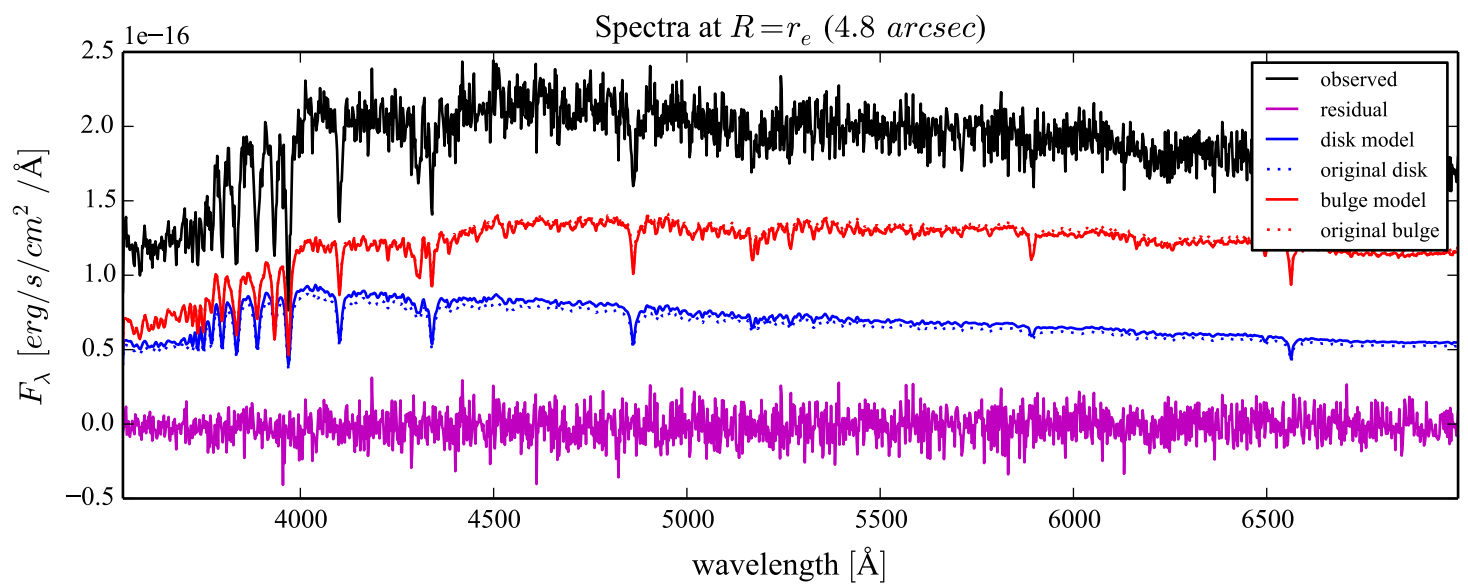
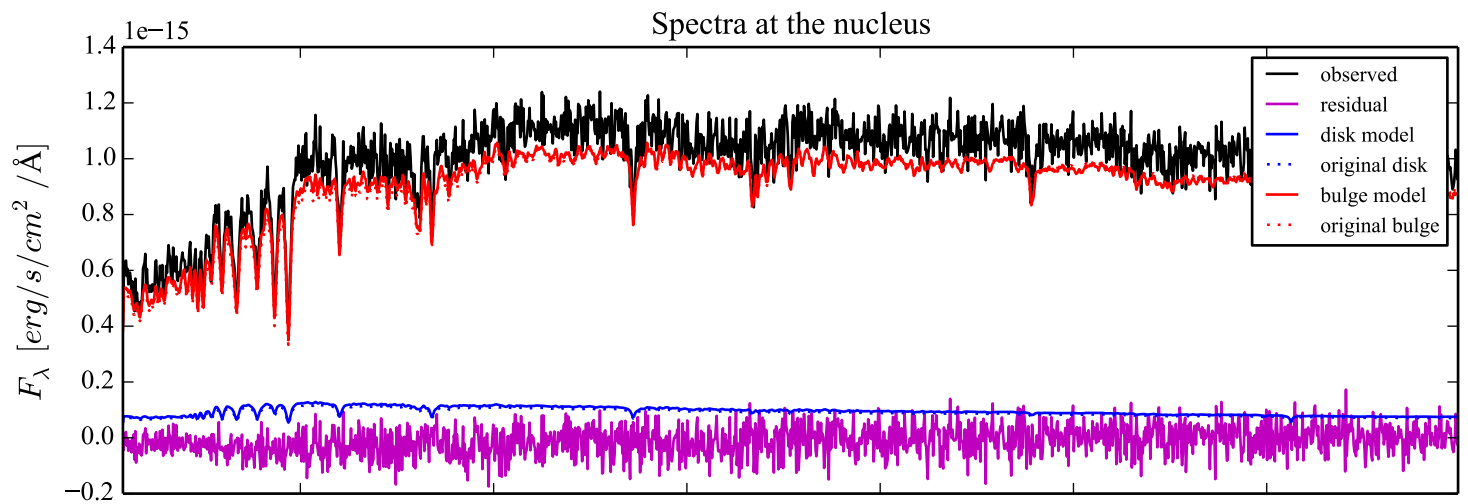


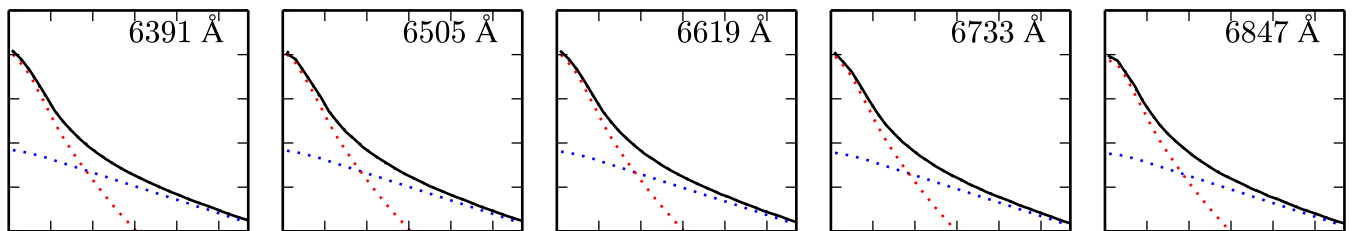
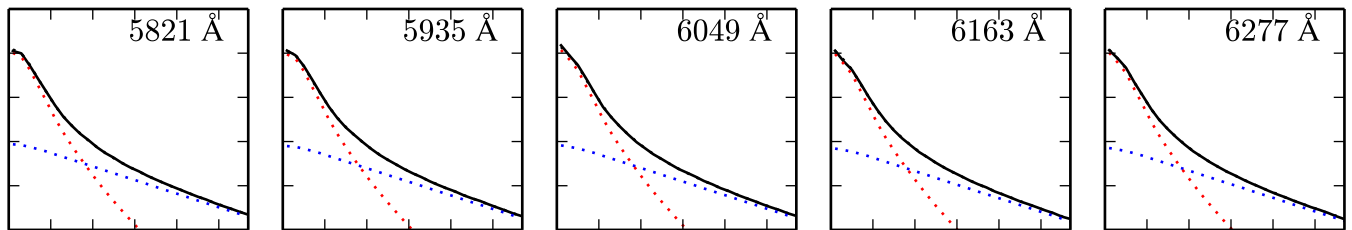
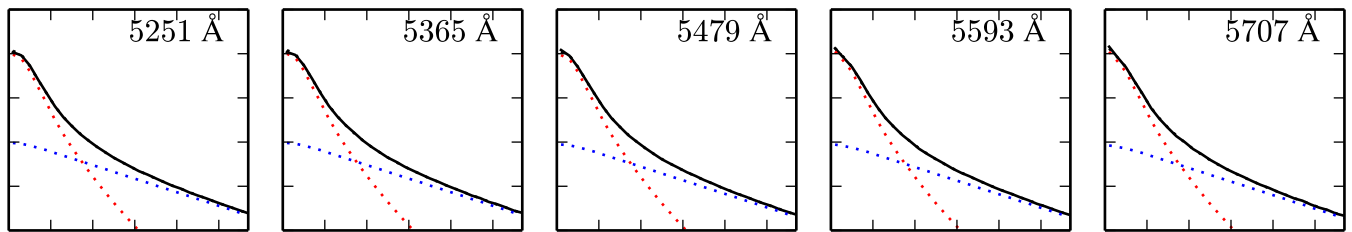
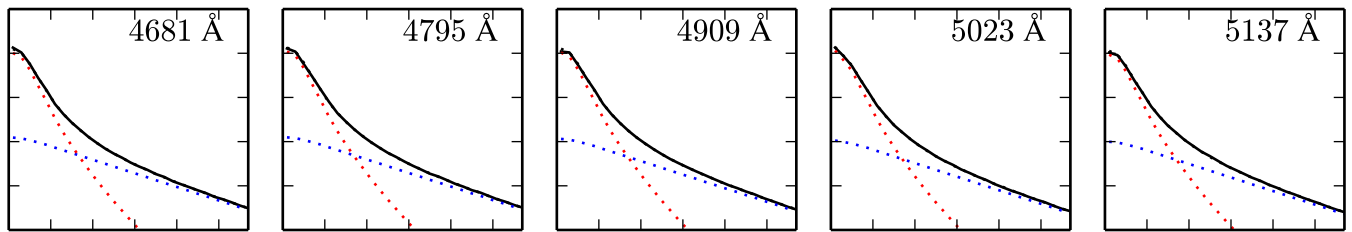
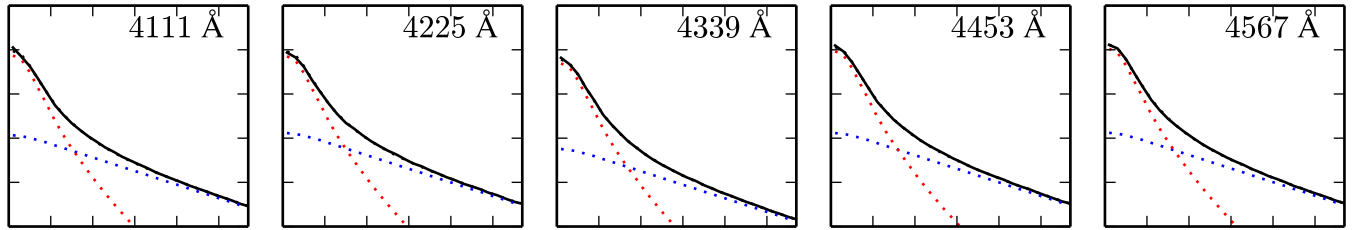
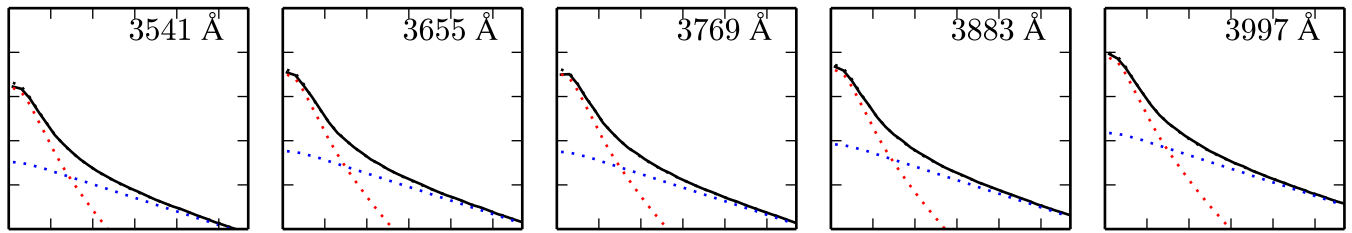
Disk





$\log F_\lambda^{bulge}$  $\log F_\lambda^{disk}$  $\log F_\lambda^{obs}$  $(F_\lambda^{obs} - F_\lambda^{bulge} - F_\lambda^{disk}) / F_\lambda^{obs}$ 





$\log F_\lambda$ [erg/s/cm²/Å]
-14.5
-15.0
-15.5
-16.0
-16.5
-17.0
0 5 10 15 20 25
radius [arcsec]