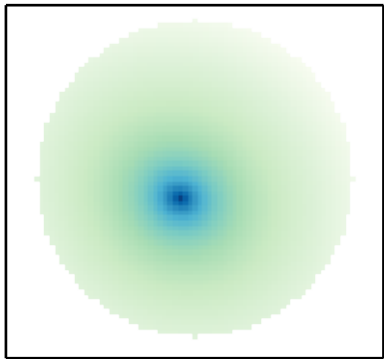
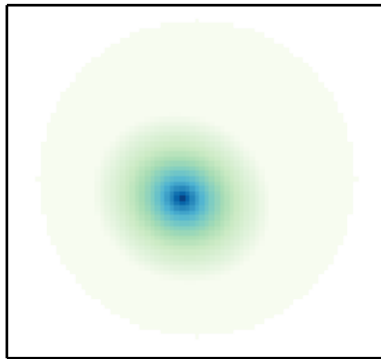


Original model: $I_e = 2.000$, $r_e = 5.000$, $n = 2.000$, $I_0 = 1.000$, $h = 15.000$, $FWHM = 2.40$

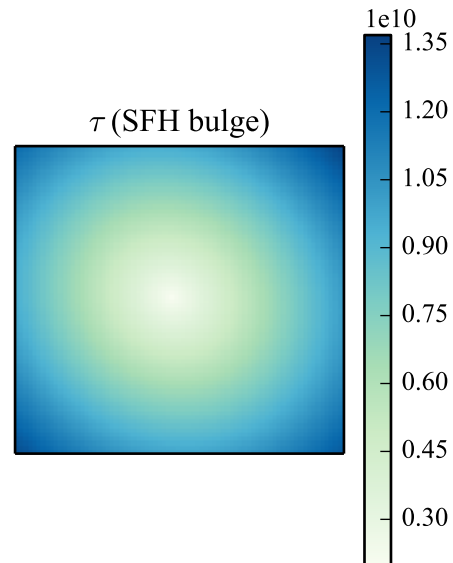
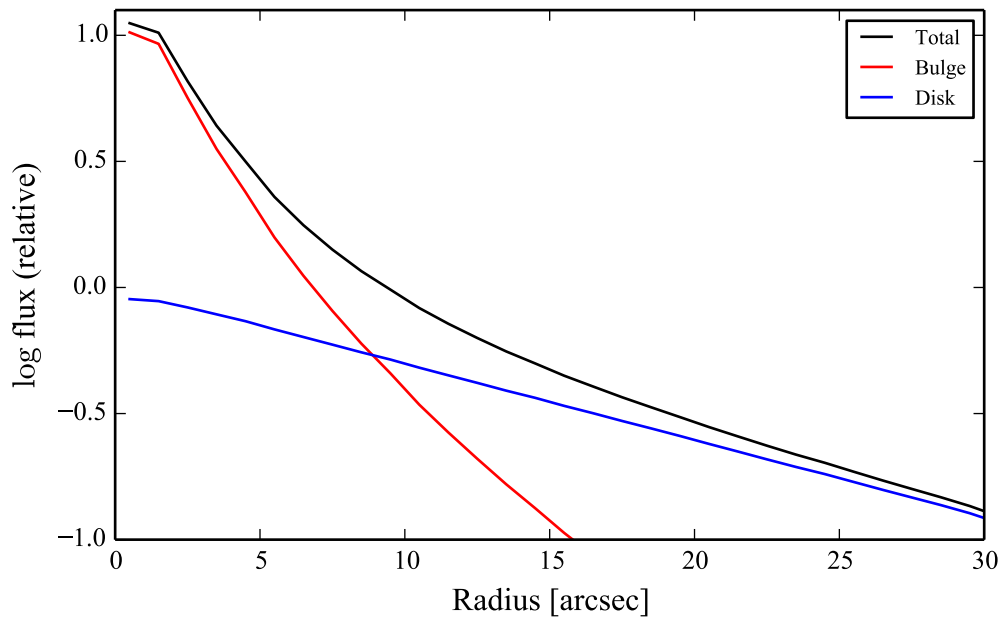
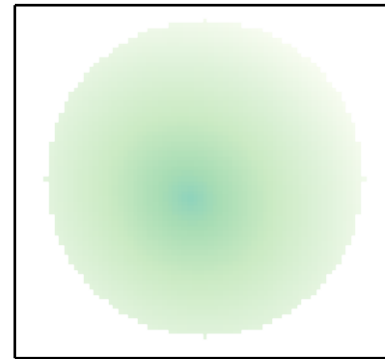
Total



Bulge

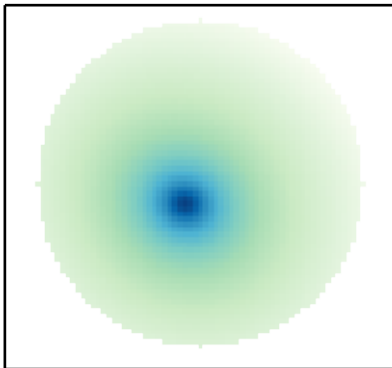


Disk

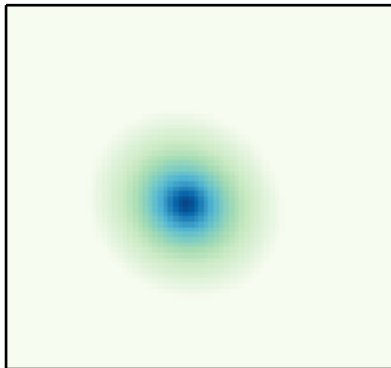


Initial model: $I_e = 1.735$, $r_e = 5.411$, $n = 2.310$, $I_0 = 0.913$, $h = 15.365$, $FWHM = 2.80$

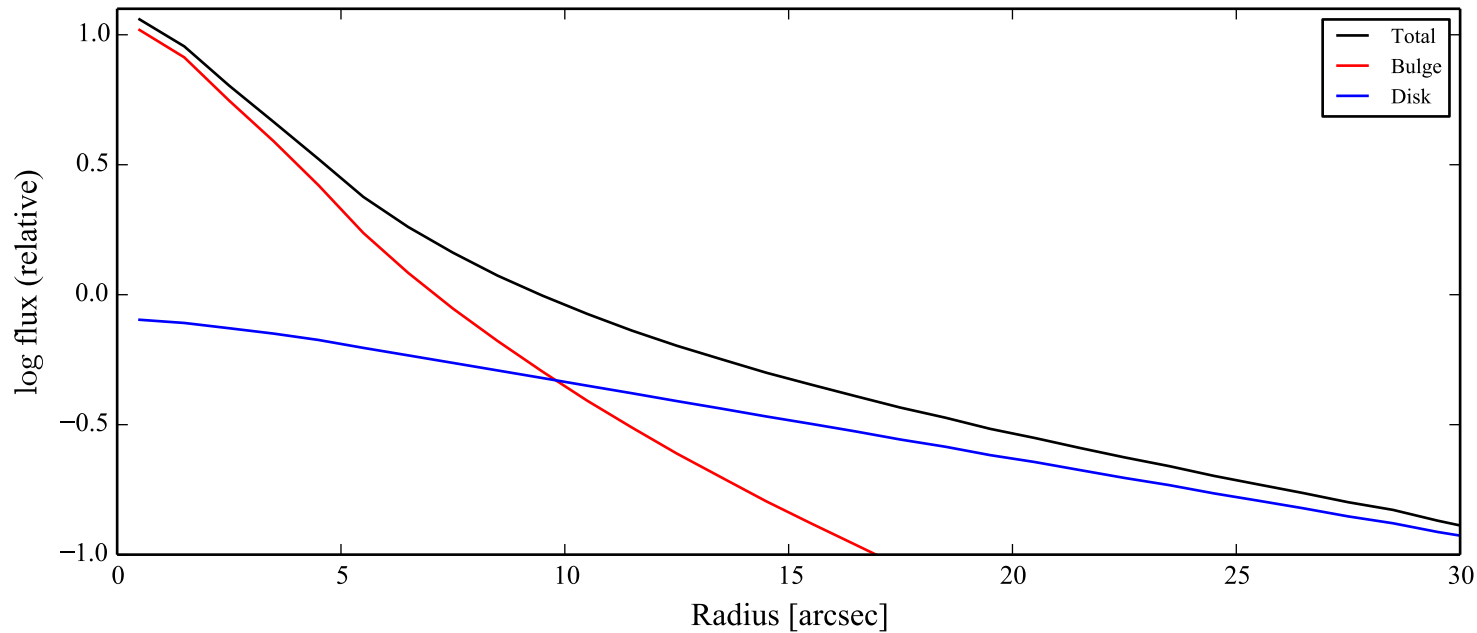
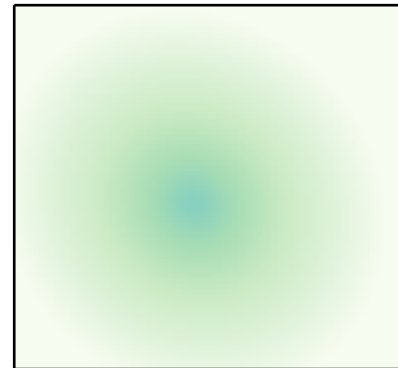
Total

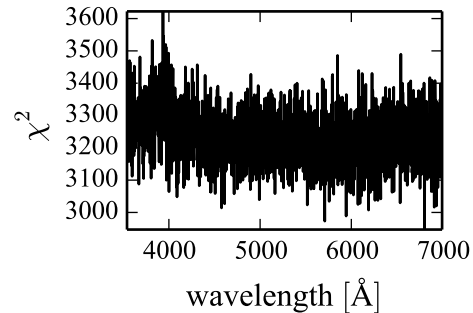
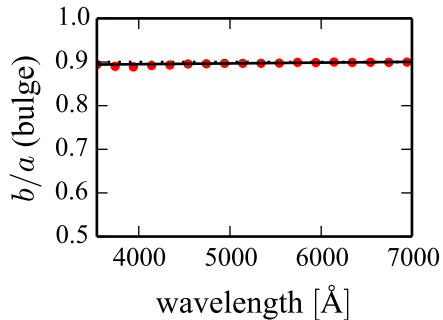
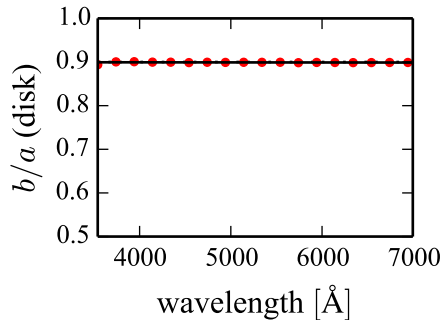
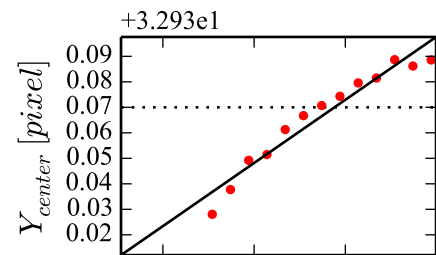
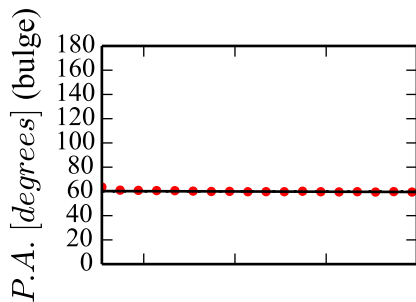
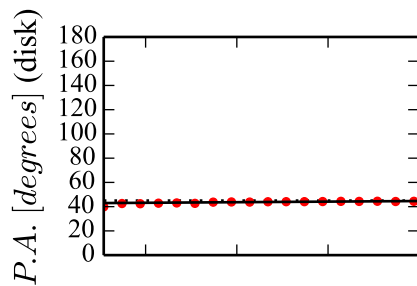
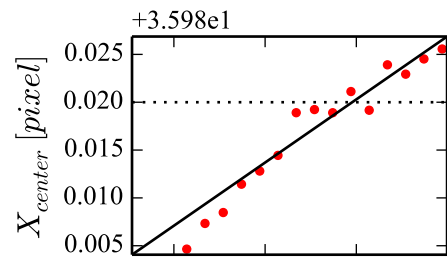
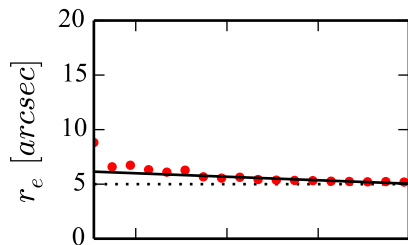
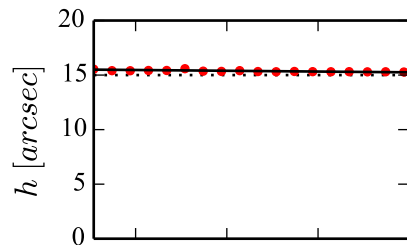
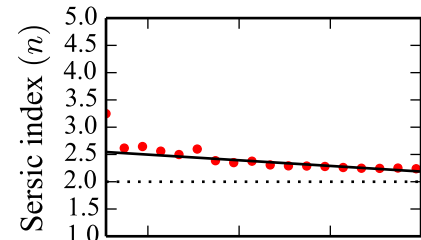
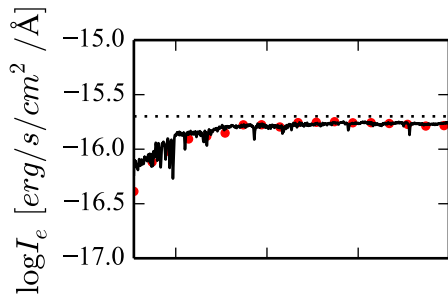
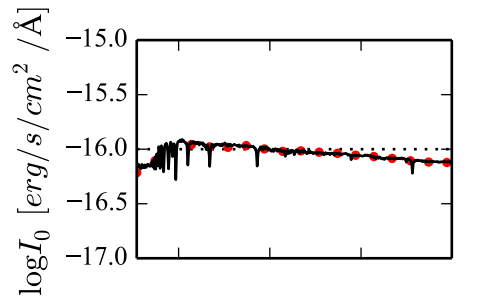


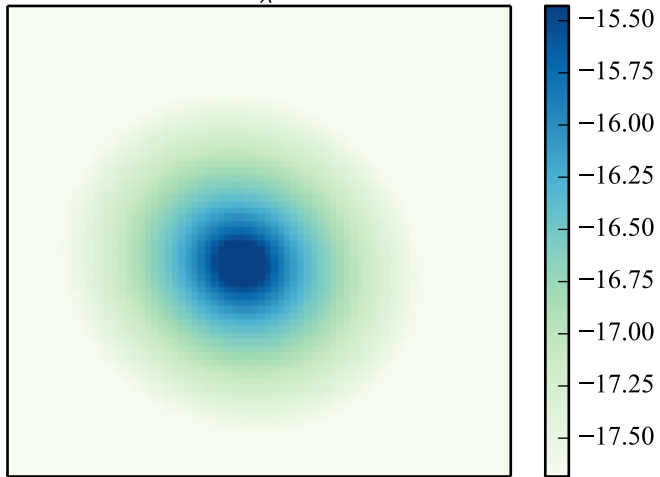
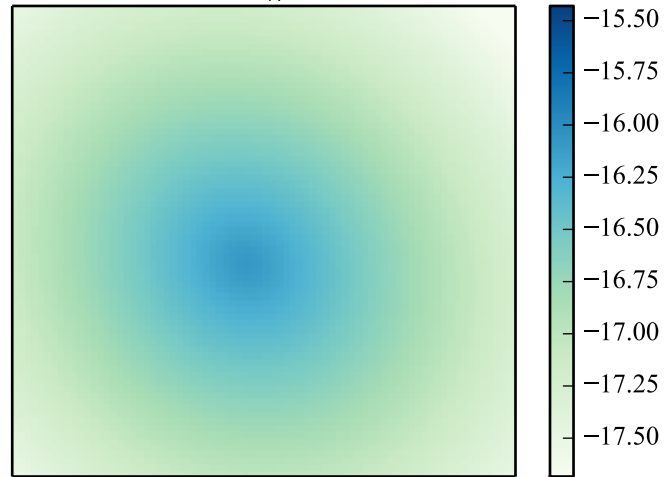
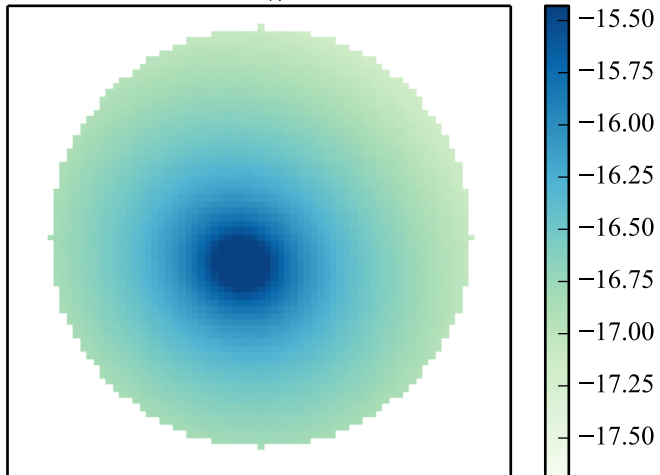
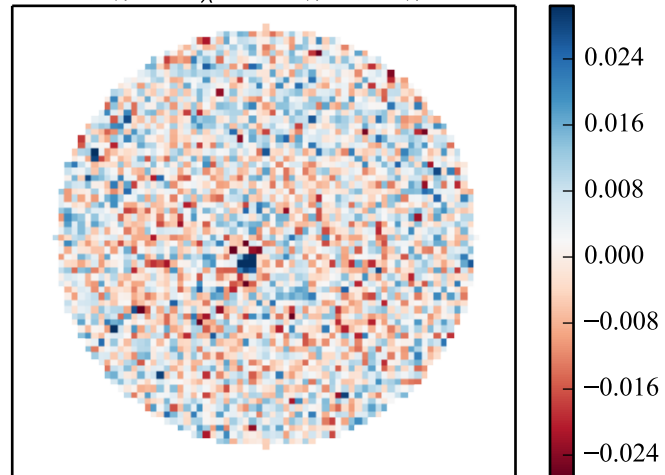
Bulge

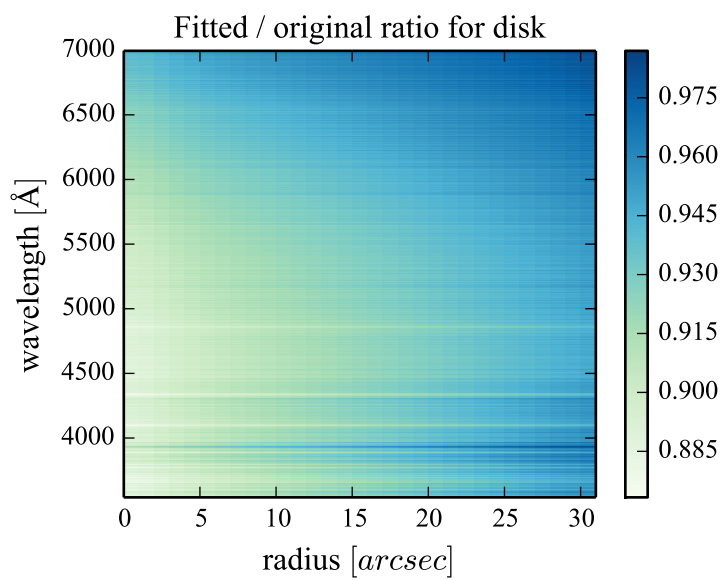
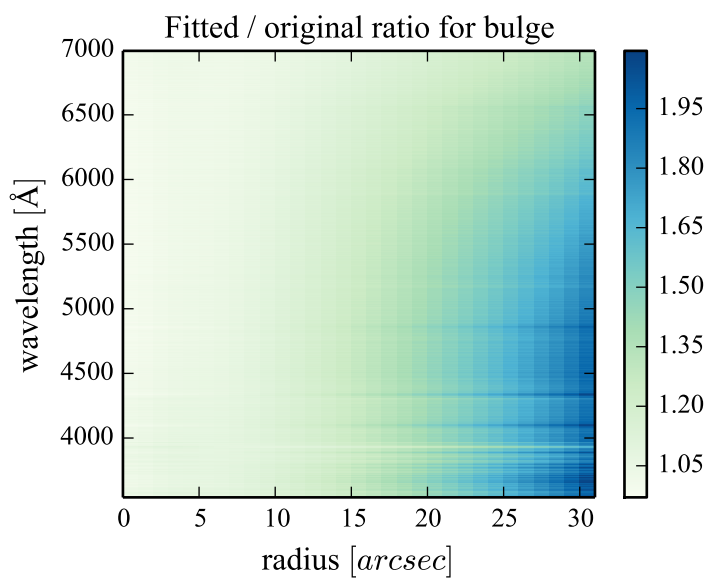
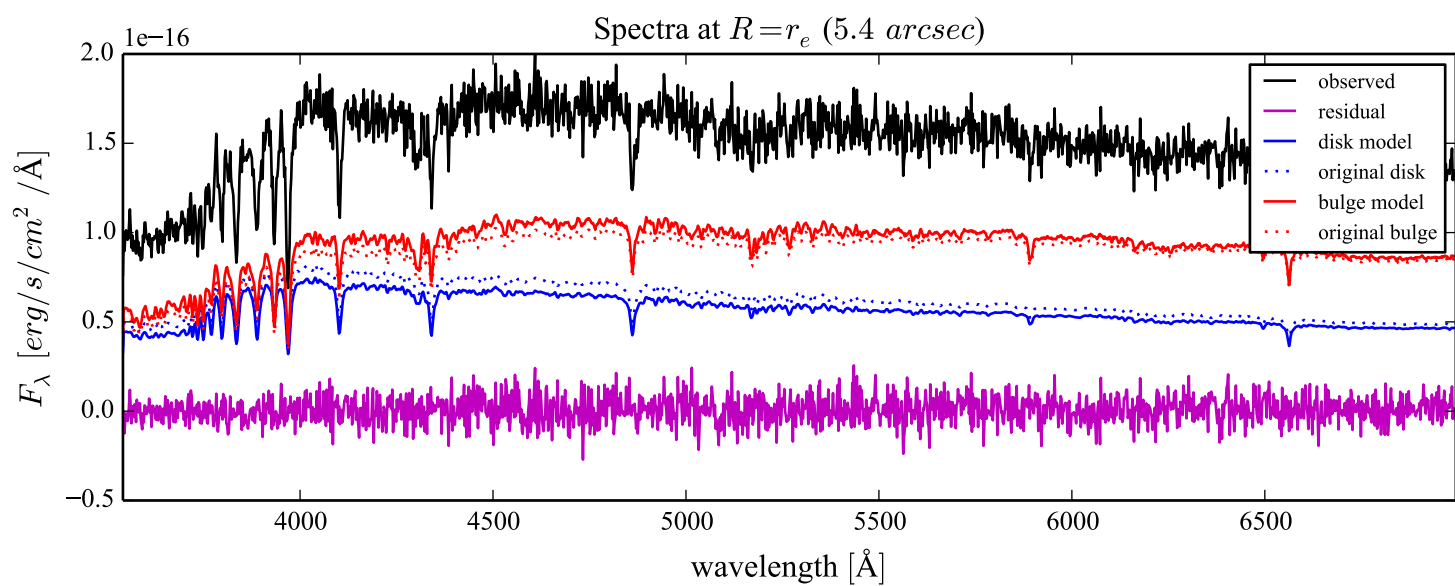
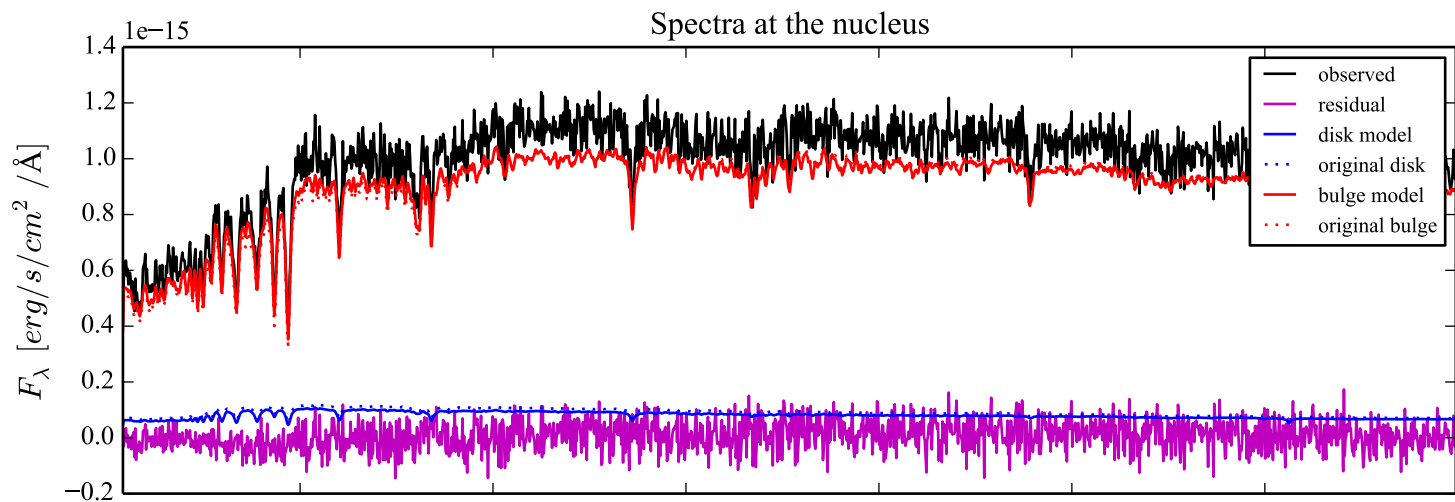


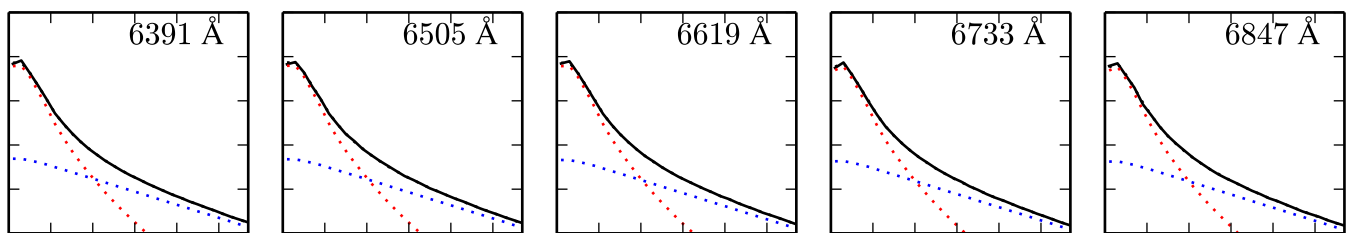
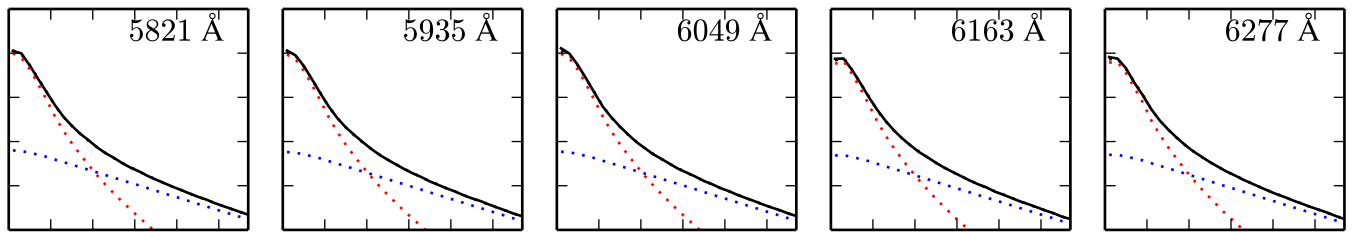
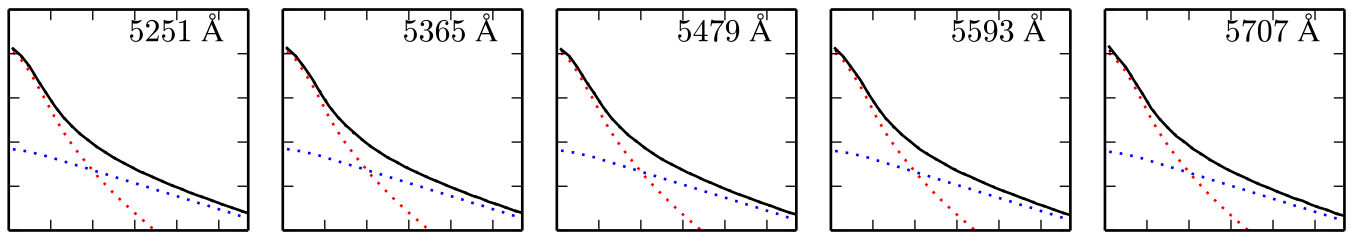
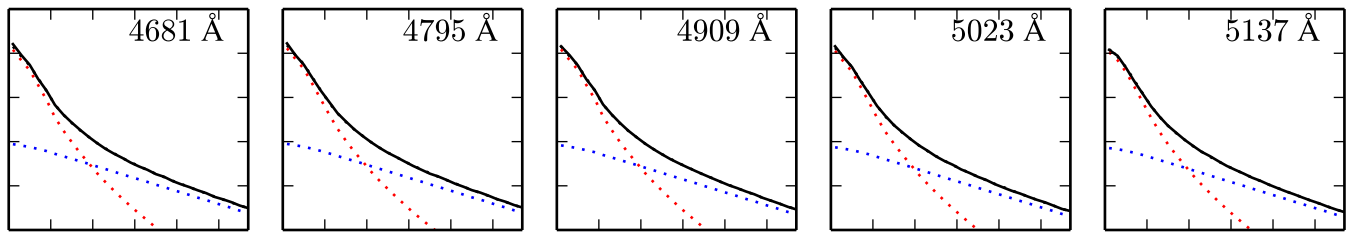
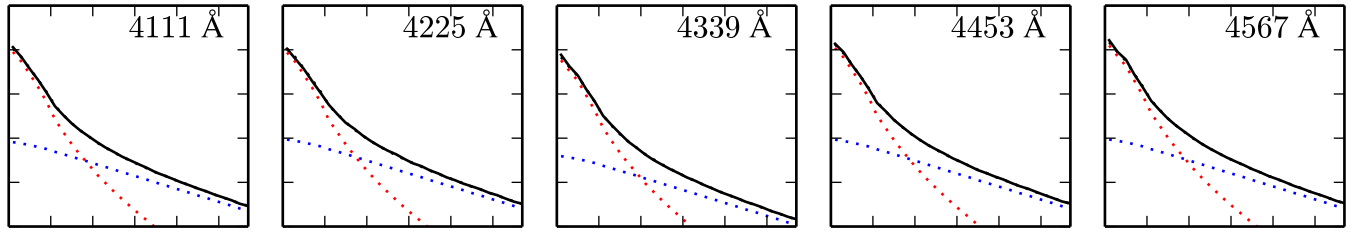
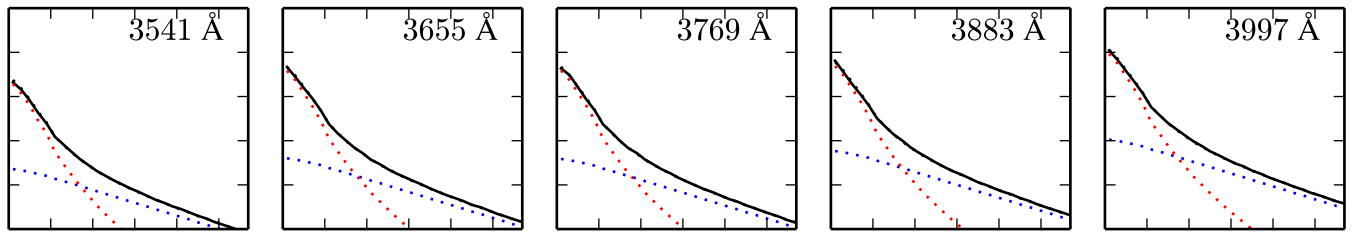
Disk





$\log F_{\lambda}^{bulge}$  $\log F_{\lambda}^{disk}$  $\log F_{\lambda}^{obs}$  $(F_{\lambda}^{obs} - F_{\lambda}^{bulge} - F_{\lambda}^{disk}) / F_{\lambda}^{obs}$ 





$\log F_\lambda$ [erg/s/cm²/Å]
-14.5
-15.0
-15.5
-16.0
-16.5
-17.0
0 5 10 15 20 25
radius [arcsec]