

Umzungezo welanga kaNomkhubulwana, Izihlobo ezahlukene zezisihomo ziyabonakala ebusuku ngezikhathi ezahlukene zonyaka.

Abantu abarni mabhekana kwizingungu zomhlaba bahlanzezokle mawubaqhatshani sa, kanti futshi babona izisihomo zihlanzezokle.



8

Izinkanyezi zibonakala ebusuku kuphela: emini, zisuke zifihlwe ukukhazimula kwelanga.

Oryakeni, uMhlaba uzungeza ilanga okudala ukuthi izingxenywe ezahlukene zomkhathi zibonakale ngezikhathi ezahlukene zonyaka (Bheka umdwebo ekhaesini elilandelayo).

Imbulunga yezinkanyezi iyimbulunga yokuziqambela ezimkeke eMhlabeni lapho khona izinkanyezi ezikhokhelwe khona kanti futshi zibonakala sengathi ziyakaza khona.

Indlela yelanga kwimbulunga yezinkanyezi iyindilinga enqamula kwizisihomo ezisondelene nesicaba somjikezalo somhlaba ekuyingelezani kwelanga. Lendlela ibizwa ngecathamo.

9

Ifulégi laaseBrazil, izinkanyezi zalo ezama-27 zimlele izifundazwe zakhona kanti zihlelwe ngendlela efanayo naseMkhathini obonakala eBrazil.



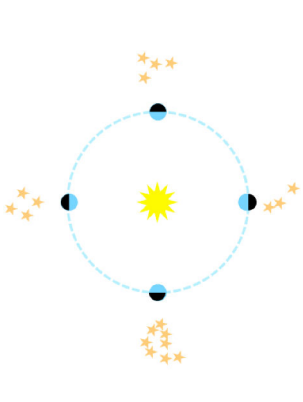
12

Kusukela emandulo abantu babeqamba izisihomo-ikakhulukazi amagama ezilwane noma onkulunkulu babo-baphinde bazakhela izingane kwane ngazo lezoziShomo.

Isibonelo, isiShomo impambano ngesingisi ebizwa nge-Orion, yaganjwa ngamaGriki. Zininzi izingane kwane ezixoxwa ngayo i-Orion, unkulunkuwana omuhle. ososayensi baseShayina babazi ngempambano beyibiza ngoShen, umzingeli noma lqhawe.

ApaseGhibithe babematanisa leisiShomo nokulunkulu wabo u-Osiris, Abokungala ukuthi bayiqambe kwakungamaSumeriyeni; bayiqamba ngo-Uru An-na, okusho ukuthi 'ukukhanya kwezulu'.

5



UMkhathilibe Ephaketheni Lami

Imifanekiso Emkhathini

Grazyna Stasińska
Paris Observatory

IziShomo ezidumile

IziShomo kanye nezomkhathi

Ikhulu leziNkanyezi ziyabonakala ngaphandle kokusebenzisa izipopolo zomkhathi. ekuhambeni kweminyaka, sezafakwa kwizindumayezzi zomkhathi ezinemidwebo emihle ekhombisa iziShomo.

Ngesinamuhla ososayensi sebekwazi nokukhala ibanga elisuka eMhlabeni liya kwizinkanyezi. KwisiShomo esisodwa iziNkanyezi zisuke zigqagqane kanti ayikho irto ezihlanganisayo. Yize sithanda ukuzibona ziyinto eyodwa.

Ngokusebenzisa izipopolo, singathola iningi leziNkanyezi. Ngowezi-2014, kusetshenziswa izipopolo i-Newton Telescope eCanary Islands, ososayensi baklabhuza indumayezzi eyayiqike the inani eliyizigidi ezingama-219 leziNkanyezi.

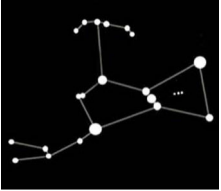
13

Impambano: Isisihomo esidumile

Kusukela emandulo abantu babeqamba izisihomo-ikakhulukazi amagama ezilwane noma onkulunkulu babo-baphinde bazakhela izingane kwane ngazo lezoziShomo.

Isibonelo, isiShomo impambano ngesingisi ebizwa nge-Orion, yaganjwa ngamaGriki. Zininzi izingane kwane ezixoxwa ngayo i-Orion, unkulunkuwana omuhle. ososayensi baseShayina babazi ngempambano beyibiza ngoShen, umzingeli noma lqhawe.

ApaseGhibithe babematanisa leisiShomo nokulunkulu wabo u-Osiris, Abokungala ukuthi bayiqambe kwakungamaSumeriyeni; bayiqamba ngo-Uru An-na, okusho ukuthi 'ukukhanya kwezulu'.



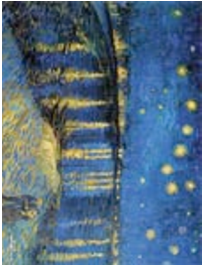
Ngentlha: Umadwebo wesiShomo Impambano owadwebshwa ngo-1687 udawetshwa irrfundidalo yomkhathi yamaPholishi uJohannes Hevelius kwibalazwe lakhe lomkhathi.

Kwesokudla: IMephu kaDunhuang, ishadi lamaShayina leziNkanyezi lesentathuri lesi-7, likhombisa isiShomo Impambano.

4

ekwazi ukubona isiShomo ufeleba webhale.

2



'Ikazimulo yonkhatshi eRhine umdwebo odumile owadwetshwa ibhunu uYncent Van Gogh, lapho khona unumtso



Isicaba esatholalaka eJalimane esikhololwa ukuthi senziwa eminyakeni eyi-4-000 eyedlule elkhombisa iLanga, iNyanga, Kanye nezinkanyazi ezimibaliwa okubalwa kuzona nesilimela.



Lomdwebo olinganisela kwiz-17.000 ubudala osetsheni iLascaux eFransi ukhombisa iipogo ezinkanyazi elibizwa ngesilimela.



UFezela, kwisixuntelano sidwetshwa ngu-Andalco di Negro ngowe-1330.



Idadandlovu, kwihulumayazi wamaNqisi uJohn Flamsteed (1729).



UFezela, kwisixuntelano sidwetshwa ngu-Andalco di Negro ngowe-1330.



Uranometha yaseeYeritela, iLithana uLohan Bayer (1603).

Amawale, kwisifanisa somngalikhona wokudlala sasePerthia ngowe-1537, esalotshwa ngu-al-Qazwini ngowe-1250.



Ukuze ufunde kabanzi ngalolu uchungchunge kanye neshloko esthulwe kuleNcwajana, sicela uvakashele

<https://www.tumip.org>

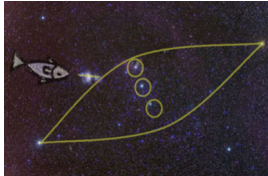


Ukuthumela iNhanhla Mbanbo TUMIP Creative Commons

3

Iyona ndlela imfundondalo yezomkhathi eyaqala ngayo. Ukuze ufunde kabanzi ngalolu uchungchunge kanye neshloko esthulwe kuleNcwajana, sicela uvakashele

Ukuze ufunde kabanzi ngalolu uchungchunge kanye neshloko esthulwe kuleNcwajana, sicela uvakashele



Ikhehla igama lomdabu laseBrazilii elisho isiShomo esakhiwe iziShomo iMpambano Kanye noCwazibe (Isithombe esithathwe emnyuziyemu yase-Amaazonia.)

Ezomkhathi kanye nokufundwa kwezinkanyazi

Igama elithi icathamo ilume kakhulu ngexxa yobudlelwano elinabo nokubhala ngokusebenzisa indawo lapho iLanga liluke likhona kwicathamo ngosuku lakho lokuzalwa. Ababhali balimbhulo babizwa ngezicathamo, kanti bahlukile kunezimfundindalo zomkhathi

Ezomkhathi ziyisayensi echaza iphinde izame ukugondisa zonke izinto eziseemkhathini (imizulane, izinkanyazi, imithalakazi). Ukubhala ngokusebenzisa icathamo akusiyiso. Ligabadela ukuthi kunobudlelwano phakathi kwendawo ilanga elikuyona kanye nemizulane kanye nezimpilo zabantu. Asikho isizathu sokuthi lokhu kubanjalo. Inganinjalo, kunobufakazi obuningi obukhombisa ukuthi lokhu akusilo iqiniso.

11



Isewaha sesentshuri lesi-6 esikhombisa isondo lesicathamo elimidwebo yamaGriki.



Icathamo lamaShayina, lalisetsenziselwa ingoboko, ilihlukile kunecathamo lasentshonalanga

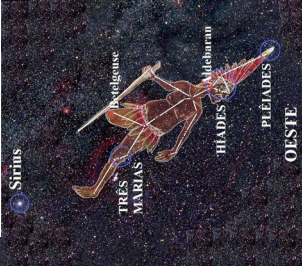
10

Impambano « eguqukezelwe »

Izinganekwane zakwamanye amasiko zihlukile kakhulu. Kusukela kumaYollingu, abomdabu base-Australia, iMpambano iyisiklebhe esiphethe izinsizwa ezintathu ezilamanyo ababeyodoba. Oyedwa wabo wadla iNhanzi ababengavunyelwe ukuyidla. Ngokudinwa, inkosikazi yelanga, yakha inkanyamba eyathatha isiklebhe esasithwele lezi izelamani yaasiyisa esibhakabhakeni. Inganekwane ehlukile exoxwa ngabomdabu baseBrazilii: isiShomo sendoda simele indoda uNkosikazi wayo owayefela umfowabo. Wabulala umyeni wakhe, wamunqamula umulenze owodwa. Onkulunkulu bamuzwela base Bemushintsha bemenza isiShomo.

7

IsiShomo iMpambano ibukwa eningizimu nenkabazwe, lapho sibukeka sibheke phansi. Isishishila somdwebo wengwanekwane abantu base-Australia abayibunganisela nalezi isiSomo.



6