



Gloria Delgado
Inglaterra
 Instituto de
 Astronomía,
 UNAM, México



Umkhathilibe Ephaketheni Lami



Kwisinxele: Umkwebo womoya weNdonosa, odwetsihwe uDon Dixon.

Kwesokudlal, i*stThombe* seNdonosa esathwetsihwa i*Tloosi* lomkhathi *kyager* ngowe-1979, imibala ihakelwe ukucacisa iminiingwane eziyani ebusweni balomzulane.

Kwisinxele: Umkwebo womoya weNdonosa, odwetsihwe uDon Dixon.

INdonosa iyisithuhha ngokuba: iphunga layo lusehntsha ngeqeqeba neqeqeba lomoya okulona.

uqeqeba olukuphiko lunukisa okweNhlanzi eboille, ngokutshi imizwayi ye*Lamunya* mihingi.

Ekuhambeni kwesikhathi, iphunga leNhlanzi lixubana nalelo elamaManda aboilleyo, ngoba *Imvundeli* nalo lusuke lukhona.

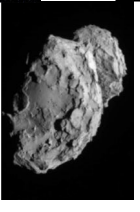
Ekuqineni, sihlonga iphunga lezilowezane elinunco, eliqhamuka *kuSanyidi*. Kuye kube khona nephunga lika*Galliga* ngexa ka*Marfusi* otholakala kulomZulane omkhulu kangaka.



Izipendulo zingemuva



Zinukisa okwani lezi izinto?



Imibuzo

Imizwayo enganuki

umJawane uholakala emimoyeni yemiZulane emubalwa (iNdonosa, uNomakhakeba, uNomakhama kanye noNlundwa), kwiziBhaqanyazi (i-67P/i-Churyumov-Gerasimenko), kanye nakwiinyanga enkulukazi kaNomakhama (iSazi). UMJawane ungaba nesizinda sejivoloji nomna seMpilo.

Lo moyu awunaphunga. Ngabe kuyakwethusa lokho? umJawane (iNgenobhuthe) awunaphunga. Mbala, amathanga egesi yokupheka kunezelwa ngobuyoyi obunuka phu ukuze abantu bezokwazi ukukunuka lapho ivuza khona.

IziFundama (iHwelanga, iKanywe, iSAlawe,...) kanye noNashabi kanye naManzi eminye yemiZwayi enganuki. INaside ikhona emoyeni womzulane iHD 1 89 7 33b. Ayinaphunga, kodwa ishisa iso lezikwehlala emakhaleni ethu, okudala ubuhlungu. 9

Ngabe umkhathilibe unuka Ngempela?

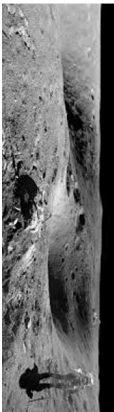
Amakhala ethu adinga ingcosana yemizwayi ukuze ezwe iphunga.

Ulanqi (isibalo semizwayi kumqumbo mnywe) kuMkhathilibe luncane ukudlula lelo elutholakala eMhlabeni.

Ukuze sibe nemizwayi elinganayo, singadinga ukuba noMqumbu omukhulu kuMkhathilibe ukudlula loyo oseMhlabeni, kanti futhi singadinga ikhala elikhulu impela laphe kuzongena khona imiZwayi.

Ngokwemfundindalo yomkhathi yaseMekisikho uDaniel Tafoya, ukuze silkwazi ukunuka iLamunya elikwifule Mpambano-KL, singadinga ukuba amakhilomitha ayi-1.4 km ubude (ukugcina ubulingani phakathi kwekhala nobude).

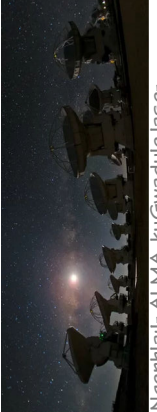
Inuka kanjani iNyanga?



I*stThombe* seNyanga nom*Tloosi* womkhathi kakhithive ye*Thumelo* lwa*seemkhathini* we*NASAlwe-Apollo 16*.

Abatloisi bomkhathi uma benuka isifanekiso esishisa so*Thuli* lwe*Nyanga* batshi lunukisa okomSizi oshile. Kodwa iuthi lungabuyilewa laphe emhlabeni, iphunga lomSizi oshile liyaashabalala. Akukho owaziyo isizathu salokhu ukeshabalala.

UBuso beNyanga bakhiwe umncowe wesihlabathi (owalathwa iziGhunananyezi ezamhilitzeka ebusweni benyanga emasukwini ayol) kanye ne*Naimbi*, u*Mcaplane* kanye no*Mgethe*. Akukho ngisho neyodwa kulazi emukisa okomSizi, wona owenziwe ngovuzizane wetshu, u*Mcalahle* kanye nesibabuli.



NgeNhlali-Imvundeli ku*Gwadule* lase-Atacama eShile. Lawa amadiele aqoba amagadisi anebangacuphi eingingama milihitha ubude, aphinde ahlonge imizwayi emkhathini.

Kusuka kwesinxele kuva kwesokudla: Imvundeli, Inukasababuli, ILamunya, umafusini kanye noMeikhapha. TAmabili okujala anukiswa okeqanda elibolile kanye noMlanyolo, ngokulandelayana kwawo. Lapho jiyi khona ingadala ukuphalaza, umkhawu wamelo, noma kuholele ekweni kwamaPhaphu. ILamunya linukisa okweNhlanzi eboille, kanti umafusini unukisa okwaGalliga, kanti uMeikhapha unephunga elibi ngempela: elihlanganisa leli likaGalliga, u-anyanyisi, ishaladi, kanye neklabishi elibilisiwe.

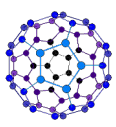
Le miZwayi seyatholakala ezindaweni ezahlukene kuMkhathilibe, okubalwa kuyo imiZulane, amafu ekudalajeka kuwo iziNkanyezi, kanye noBhaqanyazi. 4

Sazi ngani ukutshi umKhathilibe unuka kanjani?

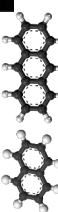
Uma imizwayi emkhathini ishaxisana, iyagala imthigilize, iqhikize, bese iyagoba. Lena iminyakazo ikhinqiza ukukhanya, ngokujingyale kwinsibovu noma kwinsinagu, lapho khona ibangacuphi lokukhanya lehluka ngomzwayi ngomzwayi.

Lapho sibhekisa khona izipopolo zethu emkhathini bese sisebenzisa izinhlobo kukhanya, silwazi ukubona iminiingwane enganakelile ngokukhanya, futhi sikhole izinhlobo zamizwayi etholakala emagumbini amane omkhathilibe.

Yize singakwazi ukwunuka umkhathilibe ngqo, siyakwazi ukucabanga ukutshi unuka kanjani ngokubonza imizwayi etholakala kuwo, ngokuba siyazi lemizwayi ukutshi inuka kanjani lapha emhlabeni. 5



Kwesokudlat; amaFuleyini
awuhlobo lomcalahle oluzelezile. Yize kunzima ukuwathola kuNomkhuhluwane, asibhichibhichili kwisigcawu somkhathini.



KwesoKudlat; amaFuleyini
abangakukhanya kude kunoNomkhuhluwane.

KwesoKudlat; amaFuleyini
abangakukhanya kude kunoNomkhuhluwane. ciele ama-700 ebangakukhanya kude kunoNomkhuhluwane.



Kwesokudlat; isiehomono
iMpambano. Iklobo elibovu likhafulwa imizwayi yomcalahwazi omaphunga
Ngenzansi: Eminye imizwayi yomcalahle eseyaphakanyiswa okubalwa kuyo
infuthalini kanye ne-**artilasini**, enukisa okwetyela. Yomibili yahlonzawa kwifu kwisiShomo iPerseus, ciele ama-700 ebangakukhanya kude kunoNomkhuhluwane.



Kwizidangazeli ezisondelene nezinkanyezeli ezijiywe ngesihowe, isibonelo kwisiDangazeli IM2-4-B, iphunga lakhona lingafana nalelo leNyama eyosive.



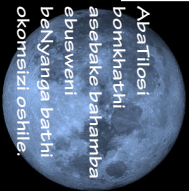
Umdwebo weLanga, imiZulane, iziNyanga zayo, uBhaqanyezi, kanye nemihlabana eyakha uHlelo lweLanga.

INyama ethosive noma umkhafulo weMoto
KuomCalahle omuningi ukudlula isihowe kuhlelo lweLanga. Ukuqbe siyakwazi ukuwuruka, ngabe unukisa okomule noma intuthu kadizili ephunga emotweni.



Mhlawumbi imizwayi yamaalingozi etholakala kulesi isirtshongo leyo ye**Thabathi**, ekhijizeka lapho isimryu sezirtshane (esitholakala kubuthi bezirtshane) ininana noTshwala. IThabathi linuka kuhle kweLumuli kanti futhi liwakalisa okwomvokwane. Ekugineni, iphunga elirtshandi kumkhathilibe.

UMnsali B2 isintshongo esinesisindo esiphindeke cise izigidi ezintathathu kweselanga kanti futhi isisindo saso esilinganiselwe kwi-150 kwibangakukhanya. Sitholakala kwindeni eduza koMzilafasimbe. **UMnsali B2** uqukethe imizwayi eminingi ehlukene. Isibonelo, imizwayi eyandulela impilo efana no**koholo olumtotoi** (ushukela) kanye no**Tshwanene olumtotoi**



AbatiTlosi bomkhathi asebaka bahamba ebusweni beNyanga bathi okomisi oshile.

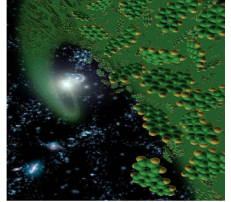


Ukuba siyakwazi ukuphefumula umoya walo, uHlelo lweLanga belonukisa okoMile kanye nomkhafulo kaDizili.

UBhaqanyezeliChuri umfanekiso weNyanga aboNile, inlanzi eboNile, ucaliga kanye neklabathi elibhilewe.

Isaluthe seMpambano siqukethe imizwayi yomcalahwazi etholakala kumkhafulo wezimoto emhlabeni.

Ngaphandle, iNdonsa inganukisa okweNhlanzi eboNile. uma uqhhubeka, inganukisa okwamaGanda aboNile, mawuqhhubeka futhi, inganukisa okweLowezane.



Kwesokudlat; Imcalahwazi emaphunga awuhume lemitzwayi emi kuhle kwezindandatho, enziwe ngomcalahle kanye neHwazi. Apholakala ciele yonke indawo lapho sikhomba khona izipopolo zethu zomkhathi.

Uhume Lemizwayi Yomcalahle
Imizwayi eyakhiwe ngamachwe omCalahle asetholakale kuwona wonke amagumbi omkhathilibe: izicaba zomsukarrhlabha, iziNkanyezi ezishirtshile, imiThalakazi, imiZulane, iziNyanga, nakwezinye izindawo. amaningi ayaxhifika kuwona wonke ilawo abizwa ngemicalahwazi emaphunga Emhlabeni, lena itholakala kwizikhafulo zezimoto kanye nakuThosi. Inukisa okwento eshile kanti futhi ziyagulisisa.



AbatiTlosi asebeke baya emkhathini bathi umkhathilibe unukisa okwe:

Bathini abatiTlosi bomkhathi?

u-Anousheh Ansari: "Unukisa okwamakheke enkokhoko omchachambiso".
uDon Pettit: "Ungikhumbuzisa okwomoya okhafulwa izisheleli, okungumzuwa omunandi, osanisimbi futhi omcodi".
u-Alexander Gerst: "Vange laMakinati kanye nesitibla seesithuthuthu sami".
uReid Wiseman: "Kuhle kwezinguqubo eziswakeme emva kosuku kumkhithiko".
uEvin Ford: "Kuhle kwephunga emingakaze ngilizwe kanti futhi engingasoze ngalithohiwa".



Iphunga

Inzwa yokunuka, njengaleyo yolimi, ingeyamakhemikhali ngokwendalo, kodwa isebenza nasebangeni elikude: kulula ukunuka into kunokuyizwa ngolimi.

Imizwayi entanta emoyeni ifika kumankanka ethu bese igwinqwa iso lamafinyila. Ngapheszu kwamankanka kunesicubu sokunuka, ozinzwa zayo zifana nalezo zolimi.

Lezi izicubu zipheleka lapho imizwayi yephunga ifinyelela kuzona, bese zidumaza lolu ulwazi kwizidwa zokunuka, okuyizo ezithumela lolu ulwazi ebuchophweni. Uma zifika ebuchoophweni, zivusa imizwa kanye nezinkumbulo kanti futhi zikwazi nokuqhikiza imicabango yethu.

Ngalendlela, amaphunga asikhumbuzisa abantu, izindawo, kanye neziganeko esizishela ukuthi sesizikhohliwe.



Uma ufisa ukufunda kabanzi ngalolu uchungachunge kanye nezihloko ezethulwe kuleliNcwajana, sicela uvakashele u- <https://www.tiump.org>

Inumshwari: Nhlankhamba
TIUMP Creative Commons

